



BRITISH GLASS FOUNDATION

From the Chairman Graham Knowles

Welcome to our third newsletter. This year, we thought you might like to know a little more about the Trustees and in this edition we are introducing you to one of our newest Trustees, Graham Fisher MBE, who joined us in September 2011 along with Allister Malcolm, who will be featured in our next Newsletter. I am sure you will agree that Graham is doing an excellent job for the Foundation with PR and Communications and I know the immediacy of Glass-Cuts is proving to be very popular.

With the International Festival of Glass and the Portland Vase project 2012 is going to be an exciting year for anyone with an interest in glass.

In this connection the BGF is proud to be hosting a special event at Hagley Hall on the afternoon of 22 August when Dr Paul Roberts from the British Museum will be speaking about "Ancient Roman Cameo Glass" with reference to the original Portland Vase and Charles Hajdamach will speak about "The Glories of Stourbridge Cameo Glass".

I would like to thank the Glass Association and the Friends of Broadfield House for generously supporting this event.

Our first set of accounts has just been produced and are available to view on our web site. We are pleased to report that all donations that have been received are still intact with the day-to-day running costs of the BGF being met from other sources.

With best wishes for a very happy Easter.

Graham Knowles
Chairman and Trustee



FRIENDS OF BROADFIELD HOUSE

The Friends of Broadfield House not only support Broadfield House Glass Museum but many other aspects of the glass world as well, including, of course, the British Glass Foundation. Formed in 1994 the Friends enjoy a full social calendar including lectures, films, excursions and various other activities. They have a membership of around 350 and further information about the Friends and details of how to join them can be found on their web site:

<http://www.friendsofbroadfieldhouse.co.uk/>

Members receive the excellent Cameo Newsletter 3 times a year which includes reviews of events, news of forthcoming

exhibitions, sales, auctions, events, snippets and other articles.



Inside this issue:

Meet The Trustees—Graham Fisher MBE	2
Lecture Day—Hagley Hall	3
World Record Attempt	3
New Home for Siphon Collection	3
What's On	4

• *We would like to thank Broadfield House Glass Museum, and Allister Malcolm for the use of the photographs in this Newsletter.*

• *Photography by Simon Bruntnell
www.northlightphotography.co.uk*

MEET THE TRUSTEES—GRAHAM FISHER, MBE



Graham Fisher, MBE was appointed as a Trustee to the BGF in September 2011 and is responsible for PR and communications. Since that time he has certainly done a splendid job in raising the profile of the Foundation and keeping everyone informed with his witty GlassCuts.

A science graduate and qualified lecturer in adult education, Graham's professional credentials include a lengthy period as Special Features correspondent for a monthly waterways magazine.

Graham attributes his lifelong love of canals to his strong Black Country roots and has been particularly fascinated by inland waterways since the 1960s when he 'legged' through Dudley Tunnel and attended his first National Rally.

His voluntary contributions include active membership of numerous waterways-related groups. He was Events Coordinator for the former annual Saul Festival in Gloucestershire and his 2009 book *Out of The Chair* details his tenure as Chairman of the Staffordshire & Worcestershire Canal Society (SWCS) between 2005-2008. He has been a regular on the public speaking circuit for over 40 years, delivering presentations ranging from the River Severn to coracle building and various other non-waterways topics. He has numerous television and radio appearances to his credit and hosts his own radio shows on 102.5 The 'Bridge (southern Black Country) where he is Chairman of Stourbridge Radio Group Ltd.

Current projects include *The Essential Birmingham Canal Navigations*, which is awaiting publication. He undertakes ad hoc commissions for official and governmental bodies including British

Waterways and acts as Boat Parade Coordinator for the annual Dudley Festival of Water and Light. In June 2011 he was appointed to become part of the West Midlands Waterway Partnership set up by the Government to advise on the transition of British Waterways to independent charitable status.

In a different but related context Graham is an Outreach Worker for Broadfield House Glass Museum, one of the most prestigious glass museums in the UK. Part of this role involves the delivery of presentations highlighting the pivotal role of Stourbridge and the surrounding area in the development of the glass industry worldwide. His 2010 book *Jewels on the Cut* examines the relationship between the Stourbridge glass industry and the local waterways network. *The Crystal Mile, Along the Stourbridge Canal* is a DVD presentation released in December 2011 that complements the book. Speaking presentations include the eponymous *Jewels on the Cut* and *The Portland Vase & Other Cameo Glass* that examines the role of the Stourbridge glass industry in the resurgence and development of cameo.

A qualified skipper, Graham is engaged by Dudley Canal Trust to conduct guided boat trips through the limestone caverns and has also assumed captaincy duties along the River Severn on larger vessels including *Oliver Cromwell*, the largest hotel boat operating on the inland system of the UK. He owns narrow-boat *Amsterdam*, a former working vessel powered by a rare French vintage engine believed to be amongst the last in existence.

In 2001 Graham Fisher was awarded the MBE for services to inland waterways and in 2005 was voted by his peers as Inland Waterways Personality of the Year, assuming the mantle from previous recipients that include John Craven OBE, David Suchet CBE and Timothy West CBE. He remains based in his beloved Black Country 'to be somewhere near waterways and glass'.

Graham's new DVD *The Crystal Mile* is available from the BGF—the cost is £7.50 plus £1.50 p&p. Cheques should be made payable to Sparrow Publishing please and sent to the address on the back page.



400 Year Anniversary of Glass Making in Stourbridge The International Festival of Glass & A Celebratory Afternoon Of Lectures At Hagley Hall



In conjunction with the International Festival of Glass the British Glass Foundation is holding a special event at Hagley Hall near Stourbridge on Wednesday 22 August commencing at 2.00 p.m. There will be two lectures, the first by Dr Paul Roberts from The British Museum on “Ancient Roman Cameo Glass” with reference to the Portland Vase, probably the British Museum’s greatest treasure, after which Charles Hajdamach will talk on “The Glories of Stourbridge Cameo Glass” from 1845 to the present day. The afternoon, which will conclude with wine and canapés, and the unveiling of the 2012 Portland Vase, is being held with the generous support of both the Glass Association and the Friends of Broadfield House. Tickets are £38 each and the booking form is available on our web site.

LONGEST GLASS BLOWING WORLD RECORD ATTEMPT



The International Festival of Glass is to be held from Friday 24th to Monday 27th August—Celebrating 400 years of glassmaking in Stourbridge.

During this year’s Festival, Allister Malcolm, BGF Trustee and resident glass artist at Broadfield House Glass Museum will be staging the world’s longest glass blowing demonstration. This event, starting at 11 a.m. on Sunday 26th August will be a public display illustrating the traditional skills of glass making which are still used in the area today.

Allister, who specialises in handmade contemporary glass, will be working from Broadfield House Glass Museum in Kingswinford and he is to be joined in the glass blowing endurance contest by fellow artist Elliot Walker who will be working from the Red House Glass Cone site in Wordsley.

Both artists are looking for sponsorship for each hour they complete to raise money for the British Glass Foundation.

To sponsor Allister or Elliot please either email Allister at info@allistermalcolm.com or bgf@britishglassfoundation.org.uk

Allister Malcolm—Photo Simon Brunnell

There is the opportunity for companies to take advantage of this busy event by placing advertisements within the studios and at the same time supporting the BGF. To display your own pop up banner the cost is £1,000; your A1 poster placement costs £500 and your A2 poster £250—all proceeds to the BGF—companies are to supply their own material.

Enquires to bgf@britishglassfoundation.org.uk.

NEW PERMANENT HOME FOUND FOR BRITISH SOFT DRINKS ASSOCIATION HISTORIC SIPHONS AND BOTTLES



The British Soft Drinks Association gifted to the British Glass Foundation their collection of historic glass soda siphons and bottles as they were moving premises and no longer had room for the collection. We are pleased to report that following our last newsletter we have been successful in finding a new, permanent home for the collection. We would like to thank The Friends of Broadfield House who put us in touch with Theresa Green of the

British Glass Manufacturers Confederation who have confirmed that the majority of the collection will be put on permanent display in their brand new foyer at 9 Churchill Way, Sheffield. They are arranging a specific display cabinet for the collection with any surplus bottles being donated to the nearby British Bottle Museum which has been run by Alan Blakeman, the proprietor, for over 30 years and which is in the middle of a heritage centre at Elsecar.

What's On

Sat 14 April	Station Glass Open Day 11 a.m. www.stationglass.com
Now until 5 August	Broadfield House Glass Museum—Blood & Bones Exhibition by Patricia Niemann http://www.dudley.gov.uk/leisure-and-culture/museums-galleries/glass-museum/whats-on/
Sun 6 May	National Glass Fair— www.nationalglassfair.co.uk
Sat 12 May	Bead Day—Broadfield House Glass Museum
12 & 13 May 11 a.m.—4.00 p.m.	Handcrafted Spring Craft Market—Red House Glass Cone www.redhousecone.co.uk
Sat 9 June	Paperweight Day—Broadfield House Glass Museum
Wed 22 August 2.00 p.m.—7.00 p.m.	An afternoon of lectures followed by wine and canapés presented by the BGF with the generous support of the Glass Association and the Friends of Broadfield House.
25 & 26 August	9th Annual Bead Fair—Bonded Warehouse, Stourbridge www.stourbridgebeadfair.co.uk
Sun 26 August Start: 11 a.m.	Longest Glass Blowing World Record Attempt—Broadfield House Glass Museum and Red House Glass Cone—details on page 3.
Sun 23 Sept	Cambridge Glass Fair— www.cambridgeglassfair.com



British Glass Foundation

Preserving the 400 Year History of Glass Production

British Glass Foundation
c/o Hulbert Properties Limited
Peartree Lodge, Hulbert Drive,
Dudley, DY2 0XW.

Phone: 01384 217984/239019
Fax: 01384 457280

E-mail: bgf@britishglassfoundation.org.uk

www.britishglassfoundation.org.uk

Trustees

Graham Knowles—Chairman

David Williams-Thomas

Charles R Hajdamach

Meriel C Harris

Graham Fisher MBE

Allister Malcolm

Registered Charity No 1139252

Registered Company No 7344291

giftaid it

I would like to make a donation to the British Glass Foundation and enclose my cheque for £ _____

Please make cheques payable to British Glass Foundation

I would like the charity to treat all donations made by me today and in the future as Gift Aid donations.

Signed Date

Name

Address

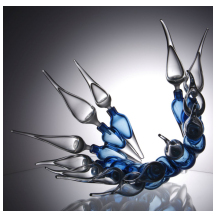
Postcode Telephone Number

Email

I would like my donation to remain anonymous

You can cancel this declaration at any time. You must pay an amount of Income Tax and/or Capital Gains Tax for each tax year (6 April one year to 5 April the next) that is at least equal to the amount of tax that the charity or Community Amateur Sports Club will reclaim on your gifts for that tax years. Please notify us if any of your details change.

The British Glass Foundation would like to thank the following organisations for their financial and moral support:-



Friends of Broadfield House Glass Museum

The Glass Association :: Scottish Glass Society

The Contemporary Glass Society :: The Glass Circle

University of Wolverhampton :: The Guild of Glass Engravers

British Glass Manufacturers' Confederation :: Glass Manufacturers Federation Education Trust

