



## BRITISH GLASS FOUNDATION TO BECOME A MUSEUM TRUST

Following extensive discussions with Dudley Council it has been agreed that the British Glass Foundation will become a Museum Trust to eventually take over the running of the brand new glass museum. This is a major turning point for the charity which has developed into a well respected and recognised body putting us in a strong position to be able to achieve our long term objectives.

From very humble beginnings and in a very short space of time the Foundation has:

- Protected Broadfield House Glass Museum and the glass collections
- Raised the profile and the importance of glassmaking and the collections in Stourbridge
- Negotiated with the Council and now in the process of becoming a Museum Trust to take control of both Broadfield House Glass Museum and the collections.
- Become centre stage with the developer, Complex Developments, who is offering us the opportunity to move into a refurbished listed building on the White House Cone site which is opposite the historic Red House Cone site in Wordsley.
- Been involved with bids for both ERDF and Heritage Lottery funding. An outline application for ERDF funding for the new museum was submitted in November by Dudley Council in conjunction with the developer, Complex Developments. This was successful and a full application for funding will now be submitted with a decision expected later this year.

This has only been possible with the dedication of a number of people and glass enthusiasts and it is also thanks to you and your generous donations that we have been able to get to this position. We would like to thank you for the trust you have put in us and we will obviously keep you informed of progress.



Artists Impression of New Museum—further details at [www.britishglassfoundation.org.uk](http://www.britishglassfoundation.org.uk)

### Inside this issue:

Museum Trust	1
Donations Update	2
Centuries of Glass Auction	3
Charles Hajdamach and Roger Dodsworth	4
David Whitehouse	5

*We would like to thank  
Allister Malcolm  
[www.allistermalcolm.com](http://www.allistermalcolm.com)  
and Simon Bruntnell for the use of the  
photographs in this Newsletter  
[www.northlightphotography.co.uk](http://www.northlightphotography.co.uk)*

---

## Donations

---

Since our launch in November 2010 you will be pleased to know that all principal donations received by the BGF of around £25,000 are still intact and to be used for the new museum. This puts us in a strong position to be able to achieve our objectives for the long term future of the museum.

Day to day running costs have been met from other sources or from donations made specifically for this purpose.

With the help and support of Dudley Council and Complex Developments we are being used as a vehicle to create a Museum Trust to take over Broadfield House Glass Museum and its collections and involved with the bids for both European and National Heritage Lottery funding. We would like to thank Higgs & Sons and Clement Keys for their invaluable help and advice as we move to becoming a Museum Trust.

This has all been made possible by your donations which has enabled us to get to the position we are now in and we would like to thank you for your continued support which is very much appreciated. A copy of our latest accounts is available to view on our web site.



Red House Cone



*Side view of the White House Cone Site with the Red House Cone in the background*

---

## CENTURIES OF GLASS AUCTION FIELDINGS— 23 MARCH 2013

---

Many thanks to Will Farmer who has once again very kindly agreed to auction the items made by Team Allister and Team Elliot at the world's longest glass blowing demonstration last Summer to raise further funds for the BGF.

The Centuries of Glass Auction will take place at The Auction House at Fieldings in Stourbridge on the 23 March and to whet your appetite here are just a few pieces that will be up for grabs! Many thanks to all glass artists who have donated items for this auction.

Full details and descriptions are available in the Fieldings Auction Catalogue—see their web site:

<http://fieldingsauctioneers.co.uk/>



*Photography by Simon Bruntnell 01384 399465 [www.northlightphotography.co.uk](http://www.northlightphotography.co.uk)*



---

## Charles Hajdamach—Retiring Trustee of BGF

---



Charles has been a Trustee of the British Glass Foundation for 2 years but in view of his extensive travelling and lecturing has now taken the decision to retire as a Trustee of the BGF so that he can concentrate more on his writing and lecturing.

One of the top authorities on glass in the country and formerly Principal Curator of Dudley Museums and Galleries Charles oversaw the planning and opening of Broadfield House Glass Museum in 1980 which quickly became one of the most respected glass museums in the world. He has published the two standard books on 19<sup>th</sup> and 20<sup>th</sup> century British glass and has lectured internationally in America, Canada, Australia, New Zealand, Spain and South Africa.

Charles was instrumental in establishing the first Dudley Glass Festival which in 2004 became the International Festival of Glass, featuring the first British Glass Biennale, which he also co-curated. Now run by Keith Brocklehurst and Natasha George the International Festival of Glass last year celebrated it's 5th year and the 400 year anniversary of glass making in Stourbridge.

Although we are sorry to lose Charles we are very appreciative of his massive contribution to the Foundation and the local glass industry. We will, of course, be keeping in very close contact with Charles and he has offered to help out the BGF whenever he can and so although he is leaving as a Trustee this is certainly not a goodbye.

---

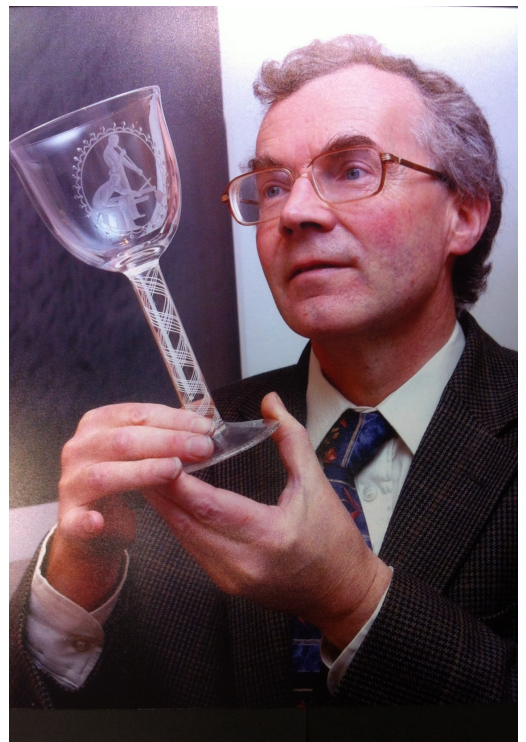
## Happy Retirement to Roger Dodsworth

---

Roger Dodsworth, Keeper of Glass & Fine Art at Broadfield House Glass Museum and founder of the Glass Association, is retiring on 1<sup>st</sup> March after 35 years of dedicated work for Dudley Museums Service. Roger has looked after one of the best glass collections in the world where the displays range from the 17th century right up to the present day, revealing the diversity of glass and the creativity of glassmakers through the ages.

Roger has been a very valuable member of Broadfield House Glass Museum and internationally recognised as an expert in Stourbridge Glass. He has written numerous publications and described as a "champion for the region's glass heritage" has worked tirelessly over many years to raise the profile of our glass heritage.

We are sure that everyone will join in with us as we extend our thanks and very best wishes to Roger for a long and very happy retirement and we hope to see you around Broadfield House and the Glass Quarter from time to time.



---

## David Whitehouse (1941–2013)

---



It is with great sadness to inform you that David Whitehouse, former Executive Director of The Corning Museum of Glass in New York, died on 17 February 2013 surrounded by his family, following a brief battle with cancer. He was 71.

David was diagnosed with cancer of the oesophagus in October of last year and was undergoing chemotherapy. He is survived by his wife and children. A community gathering to remember David was held in The Corning Museum of Glass Auditorium on 22 February.

David, who was born locally in Nottinghamshire and brought up in in Wildmoor near Lydiate Ash, was educated at King Edward VI College in Birmingham and Cambridge University. He was highly regarded and respected in the glass industry, a man of enormous experience and knowledge and a world authority in certain areas. We were delighted that he was able to join us at our fund raising event at Hagley Hall last August.

He will be very much missed by everyone who knew him and we send our sincere condolences to his wife, Elizabeth and children Julia, Simon and Nicci, grandchildren and all family and friends.

“David was a dedicated leader and a passionate scholar, and he will be sorely missed by his colleagues in Corning and around the world,” said Marie McKee, Corning Museum President. “David embodied the Museum’s mission to tell the world about glass. That mission drove everything that he did, from the founding of the Museum’s glassmaking school to the numerous publications, educational programs and exhibitions that he oversaw. We are very grateful to David for making The Corning Museum of Glass the world-class institution it is today.”

To read more about David and his wonderful work please visit the Corning web site to read their obituary to David:

[http://www.cmog.org/blog/2013/02/18/corning-museum-of-glass-mourns-the-loss-of-former-director-david-whitehouse/?utm\\_source=rss&utm\\_medium=rss&utm\\_campaign=corning-museum-of-glass-mourns-the-loss-of-whitehouse](http://www.cmog.org/blog/2013/02/18/corning-museum-of-glass-mourns-the-loss-of-former-director-david-whitehouse/?utm_source=rss&utm_medium=rss&utm_campaign=corning-museum-of-glass-mourns-the-loss-of-whitehouse)



*David Whitehouse with Dr Paul Roberts (British Museum)  
at Hagley Hall—August 2012*

# What's On

23 March Centuries of Glass Auction—The Auction House, Mill Race Lane, Stourbridge  
[www.fieldingsauctioneers.co.uk](http://www.fieldingsauctioneers.co.uk)

## Events & Exhibitions at Broadfield House Glass Museum

10 February Collectomania—West Meets East  
Until 9 June A chance to find out more about unusual collections and the interesting people who collect them

18 May Beads Day

16 June Paperweight Day

20 July Bonhams Valuation Day

17 August Family Fun Day

For more details go to: <http://www.dudley.gov.uk/see-and-do/museums/glass-museum/>



British Glass Foundation

Preserving the 400 Year History of Glass Production

British Glass Foundation  
c/o Hulbert Properties Limited  
Peartree Lodge, Hulbert Drive,  
Dudley, DY2 0XW.

Phone: 01384 217984/239019  
Fax: 01384 457280

E-mail: [bgf@britishglassfoundation.org.uk](mailto:bgf@britishglassfoundation.org.uk)

[www.britishglassfoundation.org.uk](http://www.britishglassfoundation.org.uk)

### Trustees

Graham Knowles—Chairman  
David Williams-Thomas  
Meriel C Harris  
Graham Fisher MBE  
Allister Malcolm

Registered Charity No 1139252  
Registered Company No 7344291

*giftaid it*

I would like to make a donation to the British Glass Foundation and enclose my cheque for £ \_\_\_\_\_

Please make cheques payable to British Glass Foundation

I would like the charity to treat all donations made by me today and in the future as Gift Aid donations.

Signed ..... Date .....

Name .....

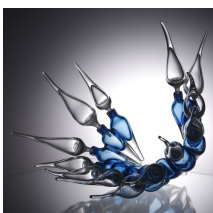
Address .....

Postcode ..... Telephone Number .....

Email .....

You can cancel this declaration at any time. You must pay an amount of Income Tax and/or Capital Gains Tax for each tax year (6 April one year to 5 April the next) that is at least equal to the amount of tax that the charity or Community Amateur Sports Club will reclaim on your gifts for that tax years. Please notify us if any of your details change.

The British Glass Foundation would like to thank the following organisations for their financial and moral support:-



Friends of Broadfield House Glass Museum

The Glass Association :: Scottish Glass Society

The Contemporary Glass Society :: The Glass Circle

University of Wolverhampton :: The Guild of Glass Engravers

British Glass Manufacturers' Confederation :: Glass Manufacturers Federation Education Trust

