



BRITISH GLASS FOUNDATION

From the Chairman Graham Knowles

Welcome to our first Newsletter. My apologies for not being in touch with you before but we have been busy setting up our new Charity and until now there has been little to report.

The Charity was set up in November 2010 and in the last few months we have been designing our new leaflet and putting in place the necessary Gift Aid documentation.

I am delighted to welcome two new Trustees, Graham Fisher MBE who will be looking after our PR and Communications and Allister Malcolm who is the resident glass artist at Broadfield House Glass Museum. I know they will both be great assets to the charity.

There have also been developments with Dudley Council where meetings are being held on a quarterly basis at the highest level. We are liaising closely with the Council and the developers and have had an input into the grant application that is being submitted on the White House Cone site (the old Stuart Crystal building) opposite the Red House Cone site in Wordsley. We are, of course, also looking at alternative sites just in case the White House Cone site is not successful.

There will be a major fund raising drive in the future to enable our dreams to become a reality and we will be creating an extensive mailing list so that we can keep everybody informed of our progress.

Our new web site is now up and running and donations will shortly be able to be made online.

I feel we can therefore look back with pride at these achievements over the last few months.

We value and appreciate your support and if you have any ideas or suggestions at any time then please let us know.

Best Wishes,

Graham Knowles

Chairman and Trustee



BGF Working With Dudley Council

We are pleased to report that we have now entered into a Memorandum of Understanding with Dudley Council which will enable us to work together on an equal partnership basis which will be instrumental in achieving our long term aims for the Charity.

Councillor David Stanley, Cabinet Member for Environment and Culture said "We are all working towards our joint aims of preserving our Borough's unique glass collection and enhancing access to it. We all recognise it is going to be a long road, but working together we

give ourselves the best chance of achieving it. We really hope people will support us as we work together, with the aim being to build a better facility for the preservation and display of our glass heritage".

Inside this issue:

Charity Launch	2
400 Year Anniversary	2
New Trustees	3
Auction Raises 7,100 for Charity	3
Gift Aid It	4

• We would like to thank *Broadfield House Glass Museum, Diana Dias-Leao, Jaqueline Cooley and Allister Malcolm* for the use of the photographs in this Newsletter.

• Photography by *Simon Bruntnell*
www.northlightphotography.co.uk

CHARITY LAUNCH

The British Glass Foundation was launched at Hagley Hall in Stourbridge in November 2010. Dudley's glass collection was praised as "a jewel in the crown" for the area. Antiques expert from BBC's *Antique Roadshow*, Eric Knowles, who was invited to comper at the launch, said the collection was among the world's finest.

The new Trustees along with Councillors from Dudley Council, glass experts and supporters attended the launch when the aims and objectives for the Foundation were outlined. Eric Knowles said "I may have been born in Lancashire but I have known for the past 40 years how important Stourbridge is to the heritage of glassmaking nationally and internationally. When I first heard of the Council's plans to close Broadfield House Glass Museum I was deeply concerned. The museum, like the collection itself is a jewel in the crown for this area. He added "We all want to ensure the safety and future of this glass collection. It really is one of the most important in the world".

Attendees at the Launch at Hagley Hall



400 Year Anniversary of Glass Making in Stourbridge Biennale Events

Even now, some 400 years after glassmaking began in Stourbridge, its work continues and the Foundation will be working with the Directors of the International Glass Festival to celebrate this important anniversary in 2012 by hosting a unique event.

The Glass Symposium will be on Friday 24 and Saturday 25 August 2012 which will be preceded by the usual Master Classes Monday to Thursday.



We will be celebrating by hosting a Gala Lecture Day at Hagley Hall in Stourbridge on Wednesday 22 August commencing at 2.00 p.m. There will be a lecture from Dr Paul Roberts from The British Museum on The Portland Vase—which will tie in nicely with the project by the team at the Ruskin Centre to replicate the famous Portland Vase. Charles Hajdamach will give a talk about Stourbridge Cameo Glass and there will be canapés and wine afterwards. More details to follow shortly.



Graham Fisher MBE

New Trustees of the British Glass Foundation

Graham Fisher MBE and Allister Malcolm were appointed as Trustees to the BGF in September 2011. Graham is a keen waterways and glass expert and also well known as an author and radio presenter on 102.5 FM The Bridge Radio. He will be heading up the PR and Communications for the BGF.

Allister is the resident glass artist at Broadfield House Glass Museum and has links to many glass artists. His work has become very well established in the UK and the USA. His work was featured on ITV1 House Gift last year and he was quoted as “the next best glass artist to watch out for”. Graham and Allister will be great assets to the Foundation.



Allister Malcolm

AUCTION RAISES £7,100 FOR BRITISH GLASS FOUNDATION



Clown Vase by Sue Purser Hope
www.purserhope.co.uk

Photo Credit:
David Cave



How Does Your Garden Grow by Rachel Elliott

We are extremely grateful to Will Farmer and all the staff at Fieldings Auctioneers Limited and to Jaqueline Cooley and all the glass artists and collectors who donated items for the Five Centuries of Glass Auction held on 9 April at Fieldings in Stourbridge. This was our first major fundraising event and raised £7,100 for the Foundation.

We would like to thank all those bidders who were successful in acquiring one of the donated pieces - some of which are shown here—we are sure they will feel a proud sense of involvement and support for a cause which has touched the hearts of glass collectors and artists around the world. We would also like to thank Geoff Hill who bought and donated back to the Foundation Allister Malcolm’s Sphere and Dagger.



Sugar Rush by Charlotte Hughes Martin
www.charlottehughesmartin.com



Triple Cased Cameo Vase by Jonathan Harris
www.jhstudioglass.com



Stevens & Williams 1930’s Cut Glass Vase
Donated by Dr Graham Cooley and raised £1,000



Graal Technique Vase by Malcolm Andrews

Preserving the 400 Year History of Glass Production

British Glass Foundation
c/o Hulbert Properties Limited
Peartree Lodge, Hulbert Drive,
Dudley, DY2 0XW.

Phone: 01384 217984/239019
Fax: 01384 457280
E-mail: bgf@britishglassfoundation.org.uk

www.britishglassfoundation.org.uk

Trustees

Graham Knowles—Chairman

David Williams-Thomas

Charles R Hajdamach

Meriel C Harris

Graham Fisher MBE

Allister Malcolm

Registered Charity No 1139252

Registered Company No 7344291

giftaid it

I would like to make a donation to the British Glass Foundation and enclose my cheque for £ _____

Please make cheques payable to The British Glass Foundation

I would like the charity to treat all donations made by me today and in the future as Gift Aid donations.

Signed Date

Name

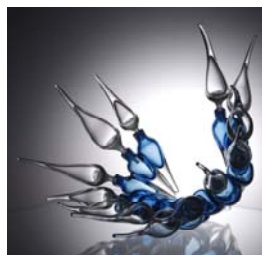
Address

Postcode Telephone Number

Email

You can cancel this declaration at any time. You must pay an amount of Income Tax and/or Capital Gains Tax for each tax year (6 April one year to 5 April the next) that is at least equal to the amount of tax that the charity or Community Amateur Sports Club will reclaim on your gifts for that tax years. Please notify us if any of your details change.

The British Glass Foundation would like to thank the following organisations for their financial and moral support:-



Friends of Broadfield House Glass Museum

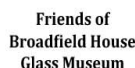
The Glass Association :: Scottish Glass Society

The Contemporary Glass Society :: The Glass Circle

University of Wolverhampton :: The Guild of Glass Engravers

British Glass Manufacturers' Confederation

Glass Manufacturers Federation Education Trust



Glass Dress by Diana Dias-Leao

“The British Glass Foundation is an enabling body bringing together all relevant and independent glass and cultural organisations and private individuals, with the common aim to protect and save the glass, archive and technical collections at Broadfield House Glass Museum and to ensure their future display to the public, access for research and continued growth”.



Okra Glass Vase
www.okraglass.com