

Post - IFoG Roundup Edition

WHITE HOT

news from *WHCmog*

And a good time was had by all

The recent International Festival of Glass was not only a brilliant event but also marked the first formal involvement of *White House Cone museum of glass* in the biennial festivities. And what a contribution the new kid on the block made!

There is already a mountain of press and other coverage out there so, rather than reinventing the wheel and reproducing it all here, we thought we would give you a round up of what happened at *WHCmog* and a few pointers to what went on elsewhere.

For starters, there's an update on our website courtesy of Darren Weed (thanks, Darren) but Allister Malcolm - our man very much in the thick of it throughout the entire show - tells us from the sharp end of more than 3,000 visitors, a total net figure to BGF coffers (after artists expenses and commissions) already approaching £4,000 and with more to yet come in, plus a hefty selection of items produced throughout the show that are destined for Fieldings Auctioneers with all proceeds to BGF.



Allister's 'Doodles' initiative continues; there was one winner and another one yet to be decided. And, just to round off a fabulous weekend, we were visited by Dave and Barbara Tyler, the Mayor and Mayoress of Dudley, who continue to offer their support. And if you'd still like more, then exhibitions by Allister Malcolm and Simon Bruntnell continue at [WHCmog](#) until 9th September.



Thanks and congratulations to all concerned, with a special note of appreciation to our new and expanding team of BGF Volunteers, headed by Julie Nicholls, whose combined efforts made it all go like clockwork.

On the broader scene there was plenty of coverage in the local media, just a selection of which can be found at:

<https://www.expressandstar.com/entertainment/2017/08/26/artists-recognised-at-international-festival-of-glass-in-stourbridge---with-pictures/>

<http://www.stourbridgenews.co.uk/news/15503850.Festival-brings-glass-fans-from-across-the-world-to-Stourbridge/>

Reports from other festival locations will doubtless be forthcoming but we cannot pass without reference to a decidedly 'off the wall' contribution down at the newly-named Glasshouse Heritage Centre (formerly Webb Corbett Visitor Centre) where Birmingham-based mosaic artist Caroline Jariwala conducted workshops offering the public an opportunity to engage in making contemporary works of art. Using scrap glass found locally in what was the waste dump of the Thomas Webb Factory, the resulting murals depicting the four main heritage features of the Coalbourn Brook valley - coal, fireclay, glass cones and the canal - can be enjoyed by all when they are fitted into the windows at the Centre.

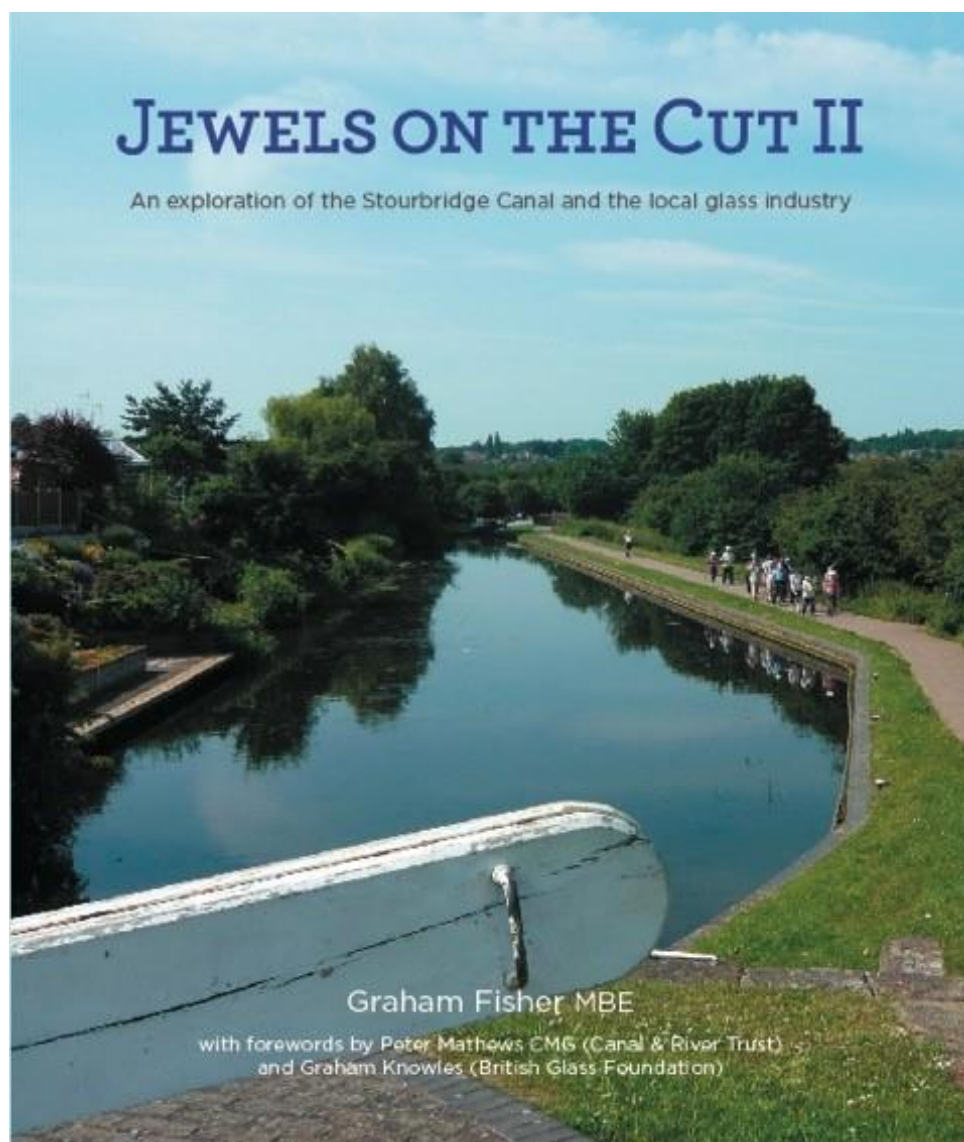
An Editor writes

We have been receiving some lovely plaudits of late, especially in the run up to IFoG, regarding the quality and content of *GlassCuts*. So, this might be an opportune time to give due recognition to the lady behind the scenes who makes it look good. Your Editor - ie, me – merely puts pen to paper; it is BGF Secretary Lynn Boleyn MBE who does the fancy layout and imagery before sending it out to our ever-burgeoning distribution list. And that's it - a combined staff of two!

GlassCuts is very much the public face of BGF and I know I also speak on behalf of Lynn when I express our gratitude for your kind support and for corresponding with us. You are what we are and without you GC would not exist. So thank you.

JoC II; a clarification

Following the launch of the Editor's latest book *Jewels On The Cut II* at the International Festival of Glass, a contribution has been made to BGF. Whilst the 'IFoG special offer' cited in the supplement to *GC115* has now expired, remaining copies purchased from [WHCMog](#) will continue to bolster BGF funds whilst stocks last. *JoC II* is now also available at various outlets throughout the Stourbridge Glass Quarter and the usual other sources, including on-line, or direct from the publisher on sparrow.publishing@mac.com at £15.00 + £2.50 p&p.



GIFTS AND DONATIONS

to BGF funds, for which we thank you

BGF is delighted to announce the receipt of a substantial donation from The Dumbreck Charity in response to our grant funding application. This is a tremendous boost to our efforts and is greatly appreciated.

In addition to cash donations, which are always gratefully received (*see below as to how you can do this*), readers are reminded of the opportunity to secure a lasting *memento* in the new museum by way of purchasing one of Allister Malcolm's engraved glass plaques. Details via the usual BGF address.

BGF routinely reviews its donation procedures. Enhancements are announced as and when but in the meantime we continue to accept donations direct by cash, cheque and BACS. For donations by BACS our bank details are:

HSBC Bank
Branch Identifier Code: MIDLGB2108U
Sort code: 40-38-07
Account number: 72076780

BGF recognizes those who wish to donate via *Virgin Money Giving*. Go via the *Virgin Money Giving* QR code listed below or click here: <http://uk.virginmoneygiving.com/charity-web/charity/finalCharityHomepage.action?charityId=1005650> **Potential donors are advised that contributions via VMG may invoke commission fees that are beyond the control of BGF.**

Donations made by a UK taxpayer can attract Gift Aid, which is a great supplement to our funds and costs the donor nothing. All we need to claim this is your Gift Aid declaration; contact us for details if you have not already supplied us with relevant particulars.

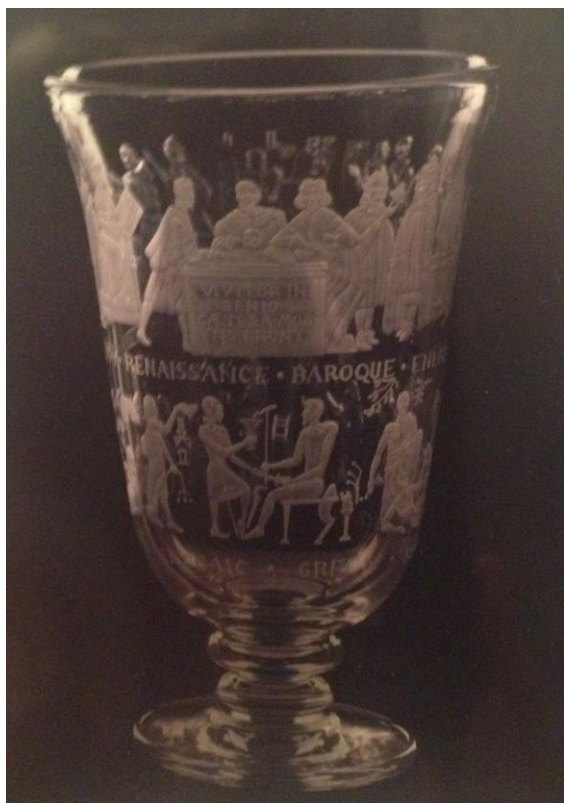
Please note: In acknowledging the support of donors *GlassCuts* generally will not reveal either the details of the donor or the amount donated unless the donor indicates otherwise or the circumstances are in the public domain or public interest. This does not preclude the possibility of details, including the amount donated and/or the donor's particulars, appearing elsewhere in BGF material.

All donations are greatly appreciated. BGF is entirely philanthropic and its Trustees are unremunerated. BGF policy is that all monies received go directly to the cause. Donations can be as one-off contributions or standing order.

RICH MIXTURE

news from elsewhere

Help sought



Genius nowadays is a hackneyed word liberally applied to anyone who has little more than their fair share of a particular talent and we tend to use it sparingly in *GlassCuts* lest we go down the route of helping devalue it. So, when we mention the late Kevin Andrews in a sentence that also contains genius we do so with the deepest respect. A tribute to Kevin and his engraving skills appeared in *GC55* dated 25.9.14 when we mourned his loss at the age of 69 but his legacy persists in the amazing back-catalogue of work he created. And it is one of those pieces that we now seek your help in locating.

Louise and Paula are Kevin's daughters and they have contacted us to ask: *'We have attached a photo of work we fondly remember dad spending many an hour on. We are curious as to its whereabouts and wondered if you could ask your readers if anyone has seen it on their travels?'*

The ladies would love to hear from anyone with information via loobags1@sky.com or on 07907 883019.

A little birdy tells us....

Our colleagues at Dudley MBC have kindly contacted *GlassCuts* to give us the latest:

Opening 30th September 2017, Dudley Museum and Art Gallery has relocated to The Archives, Tipton Road, Dudley, DY1 4SQ. Come and see us in our exciting new setting. Expect to see a full news release from Dudley MBC in due course.

Follow Dudley's story from pre-history to the present day in our newly designed premises and refreshed displays. As well as the geology displays, collections include Dudley Castle finds, Dudley Sporting Heroes, local glass. Current art work on display includes Dudley landscapes and in focus display of Frank Brangwyn.

The 2012 Portland Vase replica will also be on public display in Dudley Museum & Art Gallery until it finds a permanent home in the White House Cone museum of glass when it is fully fitted out sometime in 2018.

Good luck from all at BGF.

Here comes the bride

Congratulations to Ann Gillard, who has recently married Richard Charley. Ann is secretary to BGF Chairman Graham Knowles in his 'day job' at Hulbert Properties in Peartree Lane. BGF extends sincere congratulations to Ann and Richard, with our best wishes for a long and happy life together.



CRYSTAL CALENDAR

what's going on and where. Tell us yours

White House Cone museum of glass

Watch this space.

Red House Glass Cone

Various dates July to December 2017

Juniors at Museums

A wide range of activities for adults and kids alike, including a new additional venue at Dudley Archives & Local History Centre. Details at www.dudley.gov.uk/see-and-do/museums and via Twitter and Facebook feeds. For large print leaflet ring 01384 815571.

Ruskin Glass Centre

See <http://ruskinglasscentre.co.uk/events/>

Elsewhere around Glassville^{®GF}

14th - 15th October 2017

Connections

20th anniversary celebrations of the Contemporary Glass Society

M Shed, Bristol BS1 4RN www.bristolmuseums.org.uk/m-shed

Further information at admin@cgs.org.uk

12th November 2017

The National Glass Fair 10:30am - 4:00pm

National Motorcycle Museum B92 0EJ

<http://specialistglassfairs.com/>

PARISH NOTICES

thank you for contacting us

Friends Open Day. Saturday 14th October. Station Glass, Dadlington Lane, Shenton CV13 6DJ. RSVP by 30th September at richardgolding@stationglass.com

Neon Workshops newsletter. Forthcoming exhibitions and shows. www.neonworkshops.com

Alan J. Poole monthly newsletter. alanjpoole@aol.com

500 years of glass in a day. Andy McConnell charity event, 23rd September 2017 at Rye Creative Centre Theatre. Tickets £20. irnamortlock@arrcc.org

Neues Glas - New Glass: art and architecture. Calls for submissions for November edn. www.neuesglas-newglass.com

More soon. In the meantime, Keep it Glass.

Graham Fisher MBE

Press & Publicity,

pp British Glass Foundation

www.britishglassfoundation.org.uk

The White House Survey

The success of this project depends greatly on public support. BGF is very grateful for yours. Please spare a few moments to visit <https://www.surveymonkey.co.uk/r/whcoffsite> and complete the survey form. It will take very little of your time but will be of immense value to us. Thank you.



These are the QR codes for the British Glass Foundation (left) and Virgin Money Giving (right).

Scan to browse the work of the BGF or to make a donation. If you are donating by VMG then please note that VMG's own commission fees, over which BGF has no control, may apply.



Promotional opportunities

Black Country Radio (BCR) is the area's premier local radio station operating on 102.5FM. If you are organising a local event that is philanthropic, non-profit (it doesn't matter if there is an admission fee) and community orientated then it can be promoted free of charge via BCR. Visit www.blackcountryradio.co.uk, and follow the links.

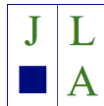
THE BRITISH GLASS FOUNDATION GRATEFULLY ACKNOWLEDGES THE SUPPORT GIVEN BY THE EUROPEAN REGIONAL DEVELOPMENT FUND AND THE HERITAGE LOTTERY FUND



EUROPEAN UNION
Investing in Your Future
European Regional
Development Fund 2007-13



... also Jane Alexander and colleagues at JLA Consulting www.jlaconsulting.org.uk for advice on the securing and management of funding, partners at Dudley Metropolitan Borough Council www.dudley.gov.uk and all friends and associates at Fieldings Auctioneers (Stourbridge) <http://fieldingsauctioneers.co.uk>



Details of other BGF partners, supporters and sponsors at: www.britishglassfoundation.org.uk/the-foundation/

Follow us on Facebook and Twitter



<https://m.facebook.com/The-White-House-Cone-Museum-of-Glass-1783619608579416/>



<https://twitter.com/whitehousecone>

Please note: These are 'live' links - click to try - but depending on your operating system you may need to insert manually into your browser.

- fin -

Disclaimer

Nope, just for a change, not this month.

Let's see how many notice, Drop us a line at the usual address for membership of the even more exclusive *BGF non-Disclaimer Spotter's Club*.

We leave you with our Reader's Top Tip of the Week and are grateful to Mrs Blee Din-Eejut of Gornal (Upper) who suggests: 'If you've boiled too much water, why not put the excess in a bowl and keep it in the freezer for use at a later date?' Thanks. Mrs E. There 's the usual voucher qualifying you for a free punch in the throat any time next Saturday night at the Bull's Head on it's way to you right now.



www.britishglassfoundation.org.uk

Registered Charity No 1139252 / Registered Company No 7344291