

2018 HAPPY NEW YEAR EDITION

WHITE HOT

news from WHCmog



Banging the gong

We are delighted to open our first edition of 2018 with the news that Ian Harrabin of Complex Developments Ltd has been awarded an MBE in the New Year's Honours list. Whilst his citation is for *services to heritage and regeneration in Coventry* in recognition of his development of the Fargo Village project, he is also, of course, the mastermind behind the construction of our museum at Wordsley. BGF knew we were in the hands of an expert from the outset; this well-deserved accolade is simply confirmation of the fact.

<http://www.coventrytelegraph.net/news/new-years-honours-man-responsible-14092312>

We are equally delighted to see that also appearing on the gong list is our good friend Steve Waltho who has been appointed an MBE for *services to local government in the Dudley borough and the community*. Former Mayor Steve is Councillor for St Thomas's and, together with wife Jayne, a staunch supporter of BGF.

<https://www.expressandstar.com/news/local-hubs/wolverhampton/2017/12/29/new-year-honours-unsung-heroes-from-across-the-black-country-and-staffordshire-are-recognised/>

BGF extends heartiest congratulations to two very worthy recipients.



Suspended in Time

Keep a slot free in your schedules for an exciting exhibition that we are planning to hold at [WHCMog](#) with an opening evening on 23rd February and then daily until 4th March 2018. Dr Max Stewart of Wolverhampton University tells us:

'The exhibition is by Level 5 (second year) students from the Applied Arts Department at Wolverhampton School of Art and reflects their own personal investigations into the Stourbridge area and environment, with particular reference to the glass making industry and a focus on the White House and Red House Cones.'

'The students have worked for twelve weeks on their submissions and have explored not just the historical nature of the subject, but also on the material qualities of both glass and ceramics. Each student has learnt new skills in the production of their chosen medium and will continue to develop them into their next semester and beyond. The event affords them the opportunity to display their work in a professional manner and will prepare them for their final degree show in a year's time'.



GIFTS AND DONATIONS

to BGF funds, for which we thank you

In addition to cash donations (*see below as to how you can do this*), readers are reminded of the opportunity to secure a lasting *memento* in the new museum by way of purchasing one of Allister Malcolm's engraved glass plaques. Details via the usual BGF address.

BGF routinely reviews its donation procedures. Enhancements are announced as and when but in the meantime we continue to accept donations direct by cash, cheque and BACS. For donations by BACS our bank details are:

HSBC Bank
Branch Identifier Code: MIDLGB2108U
Sort code: 40-38-07
Account number: 72076780

BGF recognizes those who wish to donate via *Virgin Money Giving*. Go via the *Virgin Money Giving* QR code listed below or click here: <http://uk.virginmoneygiving.com/charity-web/charity/finalCharityHomepage.action?charityId=1005650> **Potential donors are advised that contributions via VMG may invoke commission fees that are beyond the control of BGF.**

Donations made by a UK taxpayer can attract Gift Aid, which is a great supplement to our funds and costs the donor nothing. All we need to claim this is your Gift Aid declaration; contact us for details if you have not already supplied us with relevant particulars.

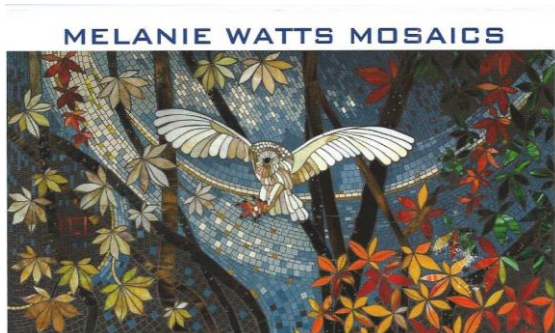
Please note: In acknowledging the support of donors **GlassCuts** generally will not reveal either the details of the donor or the amount donated unless the donor indicates otherwise or the circumstances are in the public domain or public interest. This does not preclude the possibility of details, including the amount donated and/or the donor's particulars, appearing elsewhere in BGF material.

All donations are greatly appreciated. BGF is entirely philanthropic and its Trustees are unremunerated. BGF policy is that all monies received go directly to the cause. Donations can be as one-off contributions or standing order.

RICH MIXTURE

news from elsewhere

Magic mosaic



Call me a namedropper if you must, but Eric Knowles – he of Antiques Roadshow fame – is a supporter of BGF and of all matters glass. Ever keen to promote talents, Eric has kindly drawn our attention to the stunning glass mosaic work of Melanie Watts. He tells us he met Melanie a few months ago when she attended a talk he gave on Louis Comfort Tiffany and was quite bowled over by her abilities.

See for yourself; details of Melanie Watts, and some jaw-dropping images of her mosaics, can be found at <http://melaniewattsmosaics.co.uk>. In the meantime, Eric concludes by wishing us all a Happy New Year. And the same to you, Sir.

Hot Stuff

Richard Golding is calling it a day at the end of this year and he has kindly notified us of what will be his last *Hot Stuff* exhibition before he hangs up his blowing iron. He tells us:

'Our final year at the Station kicks off on the 24th March when I get together with Kayleigh, Layne Rowe and Elliot Walker to make some special glass. Over the years, Hot Stuff has seen some amazing glassmakers join us. We hope that my final Hot Stuff celebration will be the icing on the cake, bringing together a unique mixture of different glass making styles, skills and generations.

The pieces we make at Hot Stuff 2018 will be marking the end of an era at Station Glass. Kayleigh and I are now sharing the studio so I will only be making three days a week from early February. I already have quite a list from Friends who want a special commission to mark my final days. If there is something you want making please let us know as we will be making any commissions in date order to be fair to everyone, just in case time runs out.' www.stationglass.com

Little and large

The Contemporary Glass Society is calling for submissions to their next on-line gallery that will explore glass at either ends of the size spectrum. Contributions of images are invited showing pieces that are either under 10 cms or over 1 metre. Entry is open only to CGS members but new members are welcome in order to take part in this and other exhibitions. Deadline is 30th January 2018. More via info@cgs.org.uk

ps ... places for the CGS *First Glorious Glass* show in Taunton, 21st February – 30th March 2018 and the *Glass Makers Fair* on 24th March are available. Details at admin@cgs.org.uk

In Memoriam

We are saddened to learn of the loss of Frank Turner, who has died aged 80 following a short illness. Frank worked at BGIRA in Sheffield in the late sixties to early seventies, having undertaken the Glass and Ceramics degree at University of Sheffield before that. He then went on to work at Webb Corbett in Tutbury as Technical Manager and Royal Doulton in pottery at Stourbridge and Stoke. He lived in Tutbury for 35 years. Our condolences go to family and friends, and our thanks to daughter Helen Richardson, who kindly drew the news to our attention. Helen tells us:

'If anyone who knew Dad would like to come to his funeral they will be very welcome. It's 12:00 on Friday, 26th January at St Mary's Priory Church in Tutbury, Staffordshire. After the service and burial we will meet at the Dog & Partridge, Tutbury for refreshments. My number is 07743 366887'.

More Jam on it

Kate Figgitt, Lifelong Learning and Access, Dudley Museums Service, has advised us of the JAM (Juniors at Museums) programme for January - June 2018 and, if you'll excuse the pun, it is jammed with glass-related and other events that are being held principally at Red House Glass Cone and Dudley Archives & Local History Centre. From pottery to teenage markets, glass fusion to dinosaurs, it's all here – and it's not just for kids either, with a range of adult activities suitable for all abilities plus a teacher's programme for schools. Some events attract a modest fee but most are entirely free. Details at www.dudley.gov.uk/see-and-do/museums and via Twitter and Facebook feeds or for a large-print leaflet call 01384 815571.

Mayor's appeal



The annual Mayor of Dudley's sponsored walk for 2018 is this year supporting Dudley Mind, the YMCA and Dudley Alzheimer's Society. Starting at 10.00am on Sunday 28th January from The Bonded Warehouse in Stourbridge, walkers can undertake a seven mile round trip at their own pace along the Stourbridge Arm of the canal on the newly re-laid towpath, heading via Prestwood and Stourton before returning to The Bonded Warehouse.

The entry fee of just £1 per person is payable upon arrival; there's free car parking and toilet facilities and light refreshments will be available. Further details can be obtained via Mayoral Ambassador Sue Randle on suzylimesrdc@hotmail.co.uk or 07412 531924.

The Mayor in question is, of course, Cllr Dave Tyler who along with his wife Mayoress Barbara Tyler is a supporter of BGF. Whilst this event is completely unrelated to BGF the walk does pass through the heart of the glass industry and we are delighted to offer our best wishes for a successful day.

Fair enough

Here's the dates for your diaries from our colleagues Paul Bishop and Christina Glover at Specialist Glass Fairs. Christina informs us:

'Our next event at Knebworth House will be on the Sunday 25th February 2018. Our events at the National Glass Fair this year will again be held at the National Motorcycle Museum in Solihull, West Midlands B92 0EJ on Sunday 6th May and Sunday 4th November from 10.30am until 4.00pm. Admission is £5.'

Details at www.facebook.com/specialistglassfairs, www.glassfairs.co.uk or via 01787 277100.

Thought for the day

Thanks to the likes of Sir David Attenborough and his contemporaries the world is becoming increasingly concerned at the amount of plastic in our environment, to the extent that Prime Minister Theresa May has recently announced an initiative aimed at *'eradicating all avoidable plastic waste in the UK by 2042'* (source: BBC News online). Your Editor has expressed the opinion for some time past that there may be a resurgence in the practical use of glass inasmuch that it is recyclable and herein may be an impetus. BGF, and your Editor, are entirely apolitical and make no calls or suggestions for this to happen; it is simply a prediction. But if it does come to pass, do please remember where you read it first.

CRYSTAL CALENDAR

what's going on and where. Tell us yours

White House Cone museum of glass

Watch this space and check on website.

Red House Glass Cone

Various dates January to June 2018

JAM (Juniors at Museum) programme

A wide range of activities for adults and kids alike, based principally at Red House Glass Cone and Dudley Archives & Local History Centre. Details at www.dudley.gov.uk/see-and-do/museums and via Twitter and Facebook feeds. For large print leaflet ring 01384 815571.

Ruskin Glass Centre

See <http://ruskinglasscentre.co.uk/events/>

Elsewhere around Glassville^{®GF}

25th February 2018

The Glass Fair @ Knebworth

Knebworth House, Stevenage, Herts SG1 2AX. 10:30am - 4:00pm. Admission £5.

<http://specialistglassfairs.com/>

6th May 2018

The National Glass Fair 10:30am - 4:00pm. Admission £5.

National Motorcycle Museum B92 0EJ

<http://specialistglassfairs.com/>

4th November 2018

The National Glass Fair 10:30am - 4:00pm. Admission £5.

National Motorcycle Museum B92 0EJ

<http://specialistglassfairs.com/>

PARISH NOTICES

thank you for contacting us

Lisa Pettibone Glassmaking Courses. January and February 2018, Surrey. www.pettibone.co.uk

More soon. In the meantime, Keep it Glass.

Graham Fisher MBE
Press & Publicity,
pp British Glass Foundation
www.britishglassfoundation.org.uk

The White House Survey

The success of this project depends greatly on public support. BGF is very grateful for yours. Please spare a few moments to visit <https://www.surveymonkey.co.uk/r/whcoffsite> and complete the survey form. It will take very little of your time but will be of immense value to us. Thank you.



These are the QR codes for the British Glass Foundation (left) and Virgin Money Giving (right).

Scan to browse the work of the BGF or to make a donation. If you are donating by VMG then please note that VMG's own commission fees, over which BGF has no control, may apply.



Promotional opportunities

Black Country Radio (BCR) is the area's premier local radio station operating on 102.5FM. If you are organising a local event that is philanthropic, non-profit (it doesn't matter if there is an admission fee) and community orientated then it can be promoted free of charge via BCR. Visit www.blackcountryradio.co.uk, and click on *Events*.

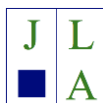
THE BRITISH GLASS FOUNDATION GRATEFULLY ACKNOWLEDGES THE SUPPORT GIVEN BY THE EUROPEAN REGIONAL DEVELOPMENT FUND AND THE HERITAGE LOTTERY FUND



EUROPEAN UNION
Investing in Your Future
European Regional
Development Fund 2007-13



... also Jane Alexander and colleagues at JLA Consulting www.jlaconsulting.org.uk for advice on the securing and management of funding, partners at Dudley Metropolitan Borough Council www.dudley.gov.uk and all friends and associates at Fieldings Auctioneers (Stourbridge) <http://fieldingsauctioneers.co.uk>



Details of other BGF partners, supporters and sponsors at: www.britishglassfoundation.org.uk/the-foundation/

Follow us on **Facebook** and **Twitter**



<https://m.facebook.com/The-White-House-Cone-Museum-of-Glass-1783619608579416/>



<https://twitter.com/whitehousecone>

Please note: These are 'live' links - click to try - but depending on your operating system you may need to insert manually into your browser.

- fin -

Disclaimer

I can't believe I forgot to go to the gym this morning. That's 35 years in a row now and yet another resolution in tatters. Ah well, I suppose it gives us an opportunity to dedicate a **Disclaimer** in memory of the fast receding festive season as we look forward to 2018. And what a festive season it was when we welcomed our first female Dr Who. I'm not one to criticise, but did anyone else notice how she'd only had the Tardis for two minutes and already she's fallen out of it and don't know where it is. Stay tuned for the next episode in which she tackles her new deadly enemy the Mysoginistadons whilst fearlessly struggling to reverse park into an inter-galactic Halfords so she can buy a replacement time-machine clutch. (*You'll be in trouble for that one - Ed*).

But everyone can make a mistake and we are reliably advised that when the Pope was asked on his recent visit to Ireland what he thought of County Down he replied that it was better when Carol Vorderman was in it. Anyway ...

GlassCuts is the left-over mince pie of the British Wassail Foundation. It is compiled by a succession of Twelfth Nighters here in the shimmering opulence that is the *GlassCuts New Year's Repository of Hope and Shattered Dreams* and has no other function than to resolve to lose those extra pounds, stop drinking throughout January and perhaps even say a bit about glass.

Whilst every effort is made to ensure accuracy, no responsibility etc etc ... (*usual faded tinsel crowns apply*).

This email is sent to you solely on the basis that you are bulging around the girth just like the rest of us after all the celebrations but if you do not wish to receive further **GlassCuts** then either strike through our names right now on your Easter egg list (yep, it's coming soon) or send an email marked: "*Are there a lot of first person singular objective pronouns, or is it just me?*" to bqf@britishglassfoundation.org.uk A brief indication as to why we are no longer your favourite eternal optimists would be appreciated.

BGF welcomes onward transmission to anyone who is not satisfied with their new U2 Sat Nav (where the streets have no name and you still haven't found what you're looking for) and would like it replaced with the Bonnie Tyler Sat Nav (which tells you to turn around and every now and then it falls apart). Similarly if you have anything you consider may be worth our colleagues out there in the *Wonderful World of ItWon'tBe2MinutesUntilWe'reDoingItAllAgain*^{©GF} then send it to BGF at the usual address.

Well, the festive season may be well and truly behind us but at least summer's coming. All that nice hot torrential rain to look forward to. Ho hum. Happy New Year.



www.britishglassfoundation.org.uk

Registered Charity No 1139252 / Registered Company No 7344291