

GlassCuts

The Journal of the British Glass Foundation



white house cone
MUSEUM OF GLASS

Edition: 136
Dated: 13.11.18

WHITE HOT

news from WHCmog

Looking good

The image says it all; here are the contractors on the morning of Monday 12th November getting to grips with the landscaping at the entrance to [White House Cone museum of glass](#). Nice.



And not forgetting ...

We are still awaiting news of our HLF grant for fit-out. We're on to it; just Keep the Faith.

GIFTS AND DONATIONS

to BGF funds, for which we thank you

In addition to cash donations (*see below as to how you can do this*), readers are reminded of the opportunity to secure a lasting *memento* in the new museum by way of purchasing one of Allister Malcolm's engraved glass plaques. Details via the usual BGF address.

BGF routinely reviews its donation procedures. Enhancements are announced as and when but in the meantime we continue to accept donations direct by cash, cheque and BACS. For donations by BACS our bank details are:

HSBC Bank
Branch Identifier Code: MIDLGB2108U
Sort code: 40-38-07
Account number: 72076780

BGF recognizes those who wish to donate via *Virgin Money Giving*. Go via the *Virgin Money Giving* QR code listed below or click here: <http://uk.virginmoneygiving.com/charity-web/charity/finalCharityHomepage.action?charityId=1005650> **Potential donors are advised that contributions via VMG may invoke commission fees that are beyond the control of BGF.**

Donations made by a UK taxpayer can attract Gift Aid, which is a great supplement to our funds and costs the donor nothing. All we need to claim this is your Gift Aid declaration; contact us for details if you have not already supplied us with relevant particulars.

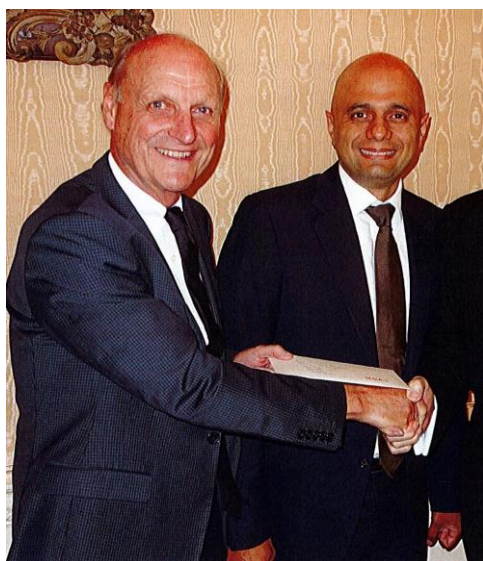
Please note: In acknowledging the support of donors **GlassCuts** generally will not reveal either the details of the donor or the amount donated unless the donor indicates otherwise or the circumstances are in the public domain or public interest. This does not preclude the possibility of details, including the amount donated and/or the donor's particulars, appearing elsewhere in BGF material.

All donations are greatly appreciated. BGF is entirely philanthropic and its Trustees are unremunerated. BGF policy is that all monies received go directly to the cause. Donations can be as one-off contributions or standing order.

RICH MIXTURE

news from elsewhere

Building bridges



On Friday 19th October 2018 the Home Secretary Sajid Javid, MP for Bromsgrove, was invited to speak at Pedmore Sporting Club where he was presented with a specially commissioned gift, a hand-made piece of Stourbridge glass designed and made by our own Allister Malcolm.

Graham Knowles, Chairman of the British Glass Foundation and former Chairman of Pedmore Sporting Club said: *'Although this was a private meeting where security was very tight we were delighted to present Sajid with this gift in recognition of the support he has given to the region'*.

Pedmore Sporting Club is a local charity set up in 1970 by a group of Stourbridge businessmen to help those less fortunate and to date has donated over £1.5m to worthy causes. Donations have included £10,000 to Acorns

Childrens Hospice, £5,000 to Meningitis Research and £16,000 for a specialist wheelchair and house modifications for Stourbridge mother, Deb Drew, who suffered devastating brain damage injuries and is now paralyzed from the neck down after rescuing a young boy from pounding surf at Woolacombe, North Devon. All the costs of administration are covered by members subscriptions, meaning that all donations or income generated are gifted directly to deserving people. The only criteria is that they have to be local and have to be very deserving to adgree that 'tugs at the heart strings'. Wherever possible, the charity prefers to give goods and services rather than cash and if it simultaneously benefits a number of people so much the better. It has recently arranged for a ramp to be built at the home of a terminal cancer patient, who was basically imprisoned in her own home, and which was accomplished in just a few days rather than having to possibly wait for much longer for the local Council to be able to do this.

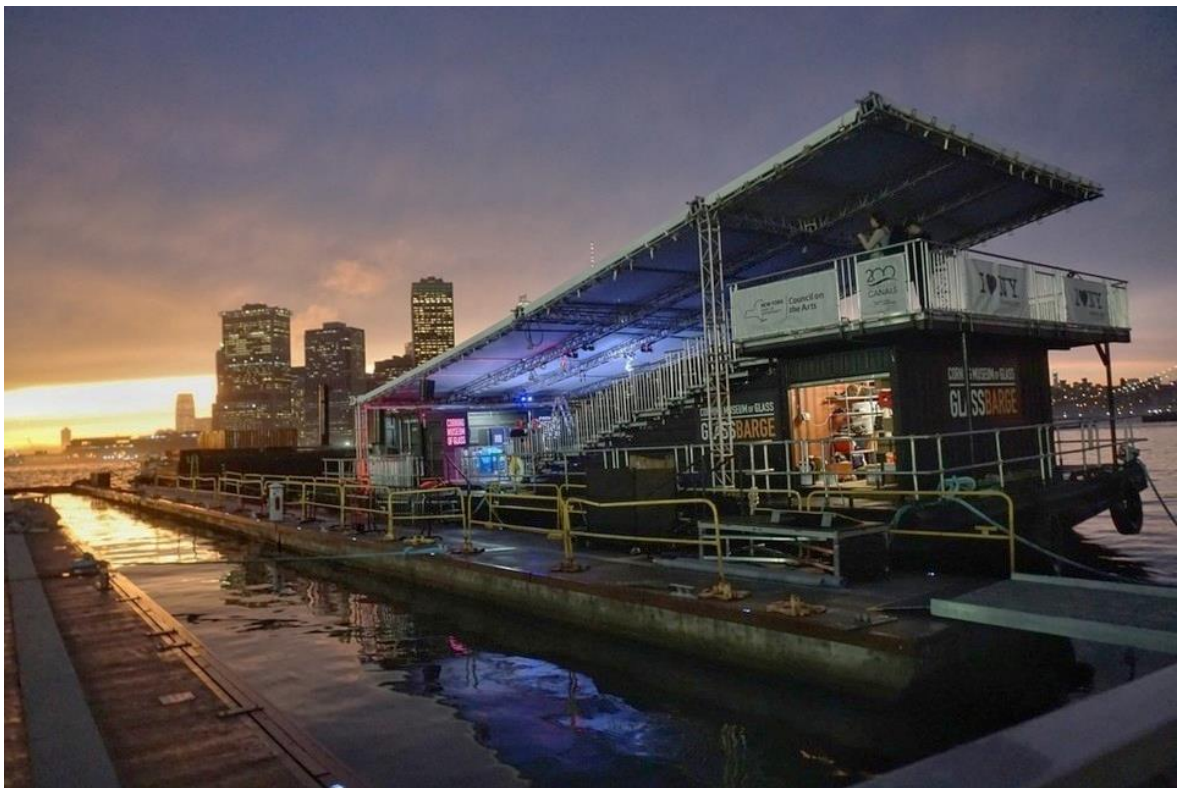
The Club is always looking for worthy causes to support and also for people to become members. Further details can be found at www.pedmoresportingclub.com

All aboard the glass bottom boat

My canal colleague Andrew Denny is Assistant Editor & News Editor of *Waterways World* www.waterwaysworld.com a leading waterways-orientated monthly magazine. Not surprisingly, in view of both the British Glass Foundation and Chance Glass Works Heritage Trust having sites located adjacent to a canal, he is a supporter of our work and every now and then sends in something of interest that we may have missed.

And he's hit the jackpot this time around, with the tale of a glass bottomed barge launched May this year in New York City, NY that has since been plying the Hudson River and Erie Canal throughout summer. It boasts full glassmaking facilities on board and has been offering free glassblowing demonstrations to more than 30 communities in a commemoration of the 150th anniversary of glassmaking in Upstate New York on 22nd September. Fittingly, the final destination was Corning Museum of Glass.

Our thanks to Andrew for this notification. The full, and utterly compelling, story is at: https://www.newyorkupstate.com/news/2018/06/glassbarge_corning_museum_of_glass_travels_erie_canal_this_summer.html

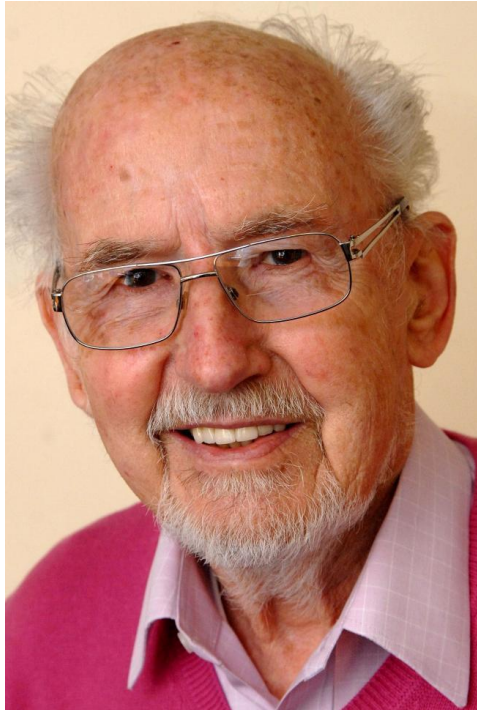


A considerable task

Antique Stourbridge Glass is a website run by our friend and supporter Dilwyn Hier who seeks to record for posterity the whole majesty of Stourbridge Glass, from concept and design through to production and including all of its aspects from written records to personalities and their techniques, their output and its provenance - in other words, the lot.

This huge project is ongoing and the scope is immense, so Dilwyn is always looking for contributors who can help in the quest. He also very graciously supports BGF by way of a donation of £10.00 to our funds from the *Premium Membership* category. We are most grateful for this and equally supportive of his endeavours so, understandably, are keen to draw Dilwyn's work to your attention. More at: <http://antiquestourbridgeglass.co.uk>

In memoriam



We are saddened beyond measure to learn of the loss Geoff Hill MBE, who passed away on 8th November at the age of 91. It is a throw of the coin whether Geoff will be remembered more for his Electrical Superstore in Amblecote, which has thrived for decades where others fell by the wayside, or for his philanthropy as founder of the Geoff Hill Charitable Foundation. And not forgetting his sporting prowess and other achievements in his younger years; the list just goes on for this truly remarkable man. However, what will never be in question is his sheer humanity and personality, his generosity of kinship and his warmth of spirit. Everyone who met Geoff was touched by him - I knew him for over 30 years so can testify to having seen these attributes in play on numerous occasions - and no one who met him will ever forget this true Gentleman. Here at BGF we will remember him for all of his qualities but not least for his interest in our work.

An obituary can be found at <http://www.blackcountryradio.co.uk/news/local-headlines/popular-stourbridge-businessman-geoff-hill-dies-at-91/> but in the meantime, on behalf of all of us at BGF, we extend our deepest condolences to wife Sue and

all family and friends. RIP.

CRYSTAL CALENDAR

what's going on and where. Tell us yours

WHCmog and Red House Glass Cone combined

The Red House Glass Cone and [White House Cone museum of glass](#) in Wordsley are holding their third joint annual Christmas festival event on 24th & 25th November 2018.

At Red House, in addition to the Teenage Market stalls and the Christmas Fayre, there will be open craft studios and gift shop, glassblowing demonstrations plus glass fusion and decorating sessions. Red Cone Coffee House will be offering a seasonal menu and Santa and Mrs Claus will also be dropping by to visit over the weekend. There may be some last minute stall availability at RHC; contact the Senior Administrator on 01384 812756.

Over the other side of the road at [WHCmog](#) it will doubtless prove equally busy, with attractions including glass engravers and, towards the end of each day, the intriguing prospect of fire-ball demonstrations around the glass studio courtesy of newcomer Madeleine Hughes who we featured in *GC133*. Allister Malcolm's ever-popular bauble making workshops will be a star turn as always; these will run from 10-4 (or whilst stocks last) and prices will range from £5 to £16 per bauble.

The festival runs from 10:00am to 4:00pm on both days simultaneously at both locations and admission is free.



White House Cone museum of glass

Watch this space and check on website.

Red House Glass Cone

Various dates June to December 2018

JAM (Juniors at Museum) programme and 'Let's Do This' for adults

A wide range of activities for kids (hitherto adults as well but this time around they get a separate leaflet), based principally at Red House Glass Cone and Dudley Archives & Local History Centre. Details at www.dudley.gov.uk/see-and-do/museums and via Twitter and Facebook feeds. For large print leaflets ring 01384 815571.

Ruskin Glass Centre

See <http://ruskinglasscentre.co.uk/events/>

Elsewhere around Glassville^{©GF}

Keep them coming in and we'll promote them

PARISH NOTICES

thank you for contacting us

Alan J. Poole monthly newsletter. November edn. alanjpoole@aol.com

More soon. In the meantime, Keep it Glass.

Graham Fisher MBE
Press & Publicity,
pp British Glass Foundation
www.britishglassfoundation.org.uk

The White House Survey

The success of this project depends greatly on public support. BGF is very grateful for yours. Please spare a few moments to visit <https://www.surveymonkey.co.uk/r/whcoffsite> and complete the survey form. It will take very little of your time but will be of immense value to us. Thank you.



These are the QR codes for the British Glass Foundation (left) and Virgin Money Giving (right).

Scan to browse the work of the BGF or to make a donation. If you are donating by VMG then please note that VMG's own commission fees, over which BGF has no control, may apply.



Promotional opportunities

Black Country Radio (BCR) is the area's premier local radio station operating on 102.5FM, DAB and on-line. If you are organising a local event that is philanthropic, non-profit (it doesn't matter if there is an admission fee) and community orientated then it can be promoted free of charge via BCR. Visit www.blackcountryradio.co.uk, and click on *Events*.

THE BRITISH GLASS FOUNDATION GRATEFULLY ACKNOWLEDGES THE SUPPORT GIVEN BY THE EUROPEAN REGIONAL DEVELOPMENT FUND AND THE HERITAGE LOTTERY FUND



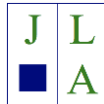
EUROPEAN UNION
Investing in Your Future

European Regional
Development Fund 2007-13



LOTTERY FUNDED

... also JLA Consulting www.jlaconsulting.org.uk Dudley Metropolitan Borough Council www.dudley.gov.uk and Fieldings Auctioneers (Stourbridge) <http://fieldingsauctioneers.co.uk>



Details of other BGF partners, supporters and sponsors at: www.britishglassfoundation.org.uk/the-foundation/

Follow us on Facebook and Twitter



<https://m.facebook.com/The-White-House-Cone-Museum-of-Glass-1783619608579416/>



<https://twitter.com/whitehousecone>

Please note: These are 'live' links - click to try - but depending on your operating system you may need to insert manually into your browser.

Disclaimer

I learnt recently that Darwin spent his whole life looking for two identical lobsters but only ever found the one. How sad is that? Then I discovered that Winnie the Pooh author creator AA Milne never knew he had a smaller brother AAA Milne. Sometimes I even ask myself whether identical twins ever appreciate that one of them was unplanned? Ah well, it's all part of life's rich tapestry, I suppose. So I thought it was high time we dedicated a *Disclaimer* to the concept of destiny, or the direction in which life takes us. I mean, who could ever have guessed that Phil Spector's brother Crispin would end up as head of quality control at Walker's? Anyway ...

GlassCuts is the genetic programming laboratory of the British Genome Foundation. It is compiled by a team of giant turtles manipulated by clever humans (*you're kidding; the turtles bit I can believe - Ed*) here in the shimmering opulence that is *GlassCuts Galapagos Branch Office* and has no other function than to clarify why Albert Einstein was a genius but his brother Frank was a monster, define 'serious stress' as when you wake up screaming but realise you haven't fallen asleep yet, and perhaps even say a bit about glass.

Whilst every effort is made to ensure accuracy, no responsibility etc etc ... (usual psychotics apply).

This email is sent to you solely on the basis that you sympathise with my recent uncle who was born with both OCD and ADHD so everything has to be perfect although not for very long, but if you do not wish to receive further **GlassCuts** then either explain why if I'm drinking coffee in my slippers it probably means I need more mugs or send an email marked: *'My mate broke both his legs and lost his voice but didn't make a song and dance about it'* to bgf@britishglassfoundation.org.uk A brief indication as to why we are no longer your favourite futurologists would be appreciated.

BGF welcomes onward transmission to anyone you feel may be interested in following our evolutionary development. I set the standard by telling you about my mate who was born thinking he was a piece of toast and all he has ever done since is think I'm trying to butter him up. Similarly if you have anything you consider may be worth our colleagues out there in the *Wonderful World of Fate and Providence*^{®GF} then send it to BGF at the usual address.

My final sideswipe at anyone believing they're pre-destined to be better than us Black Country folk relates to the time those Americans thought it was their calling to spend billions putting the first man on the moon. Here in Gornal we saved our money because we already knew there was nothing up there. Then again, perhaps we're not that clever after all; my next door neighbour got sent down for trying to rip his wife's head off. And all because the taxman said she had £3000.00 in arrears. Oh dear, you probably have to be fluent in the dialect to appreciate that one. I'll get my coat. But before I go, I appeal to readers to help me with a project I'm working on. Can anyone please remind me where Bruce Springsteen was born? Ta.



www.britishglassfoundation.org.uk

Registered Charity No 1139252 / Registered Company No 7344291