

GlassCuts

The Journal of the British Glass Foundation



Edition: 137
Dated: 18.12.18

WHITE HOT

news from WHCmog

Droning on

How it's all looking right now from the air, with grateful copyright acknowledgements to Allister Malcolm's mate who owns a drone.



WGCmog and RHC Christmas Fayre.

The images say it al. Bravo to everyone concerned.



Great job

A few weeks back we were approached by Steph Hale of *Release Potential*, a training provider based in the North East who, in conjunction with the Department of Work and Pensions, were running a programme called *The Returneeship* in Dudley, a 4-week pre-employment training programme focusing on the employability skills for unemployed learners aged 40+. It comprises a two-day project followed by two weeks in the classroom where participants can gain level 1 qualification. The final two weeks are a work placement. Steph asked if we could assist and, of course, we said 'yes'.

The project was an ambitious one, with the learners required to produce their own reconstruction of the *BBC One Show* based around pre-recorded interviews. Participants also attend workshops on subjects such as camera techniques, sound, lighting and editing, delivered by industry professionals. They then take the lead to produce their own 30 minutes VT in 2 days. As someone who once spent an exhausting fortnight with the BBC to produce a 20 minutes programme that was out of date a fortnight later, I knew at first hand just how ambitious this was so I enlisted the help of Allister Malcolm to see how we could help. Lo, did it come to pass that we were interviewed at WHCmog in mid-November by a team of course attendees and professional media players. And the end result? Well judge for yourself at <https://vimeo.com/303041536/59b12b38c6>

This is, by any yardstick, a quite superb achievement that reflects well on all concerned, not least the participants who evidently enjoyed the whole experience and gained so much towards their personal development. The entire video pans out at 41minutes; the BGF contributions come in at around 1m 25s (GF) and 9m 20s (AM). We must also mention the sterling support given by our good friend Ian Dury, former Heritage Officer at Webb Corbett Visitor Centre, who enters at 11m 53s.

Bravo that team! A quite outstanding achievement and all within the allotted two days. On behalf of BGF in general, and Allister and me in particular, we wish Steph and her team well and thank her for the invitation to participate.

GIFTS AND DONATIONS

to BGF funds, for which we thank you

In addition to cash donations (*see below as to how you can do this*), readers are reminded of the opportunity to secure a lasting *memento* in the new museum by way of purchasing one of Allister Malcolm's engraved glass plaques. Details via the usual BGF address.

BGF routinely reviews its donation procedures. Enhancements are announced as and when but in the meantime we continue to accept donations direct by cash, cheque and BACS. For donations by BACS our bank details are:

HSBC Bank
Branch Identifier Code: MIDLGB2108U
Sort code: 40-38-07
Account number: 72076780

BGF recognizes those who wish to donate via *Virgin Money Giving*. Go via the *Virgin Money Giving* QR code listed below or click here: <http://uk.virginmoneygiving.com/charity-web/charity/finalCharityHomepage.action?charityId=1005650> **Potential donors are advised that contributions via VMG may invoke commission fees that are beyond the control of BGF.**

Donations made by a UK taxpayer can attract Gift Aid, which is a great supplement to our funds and costs the donor nothing. All we need to claim this is your Gift Aid declaration; contact us for details if you have not already supplied us with relevant particulars.

Please note: In acknowledging the support of donors **GlassCuts** generally will not reveal either the details of the donor or the amount donated unless the donor indicates otherwise or the circumstances are in the public domain or public interest. This does not preclude the possibility of details, including the amount donated and/or the donor's particulars, appearing elsewhere in BGF material.

All donations are greatly appreciated. BGF is entirely philanthropic and its Trustees are unremunerated. BGF policy is that all monies received go directly to the cause. Donations can be as one-off contributions or standing order.

British Glass Biennale 2019 - Call to Artists

We have been contacted by Janine Christley with regard to next year's event and are pleased to present her appeal *verbatim*:

The British Glass Biennale is the foremost juried exhibition of excellence in contemporary glass by British artists, designers and craftspeople in the UK. With at least 80 major new glass works selected every two years, the British Glass Biennale is the flagship exhibition within the International Festival of Glass and attracts collectors, galleries and museums from around the world.

The British Glass Biennale is open to artists, designers, craftspeople and students working in all areas of contemporary glass practice or using glass as a key design element. The emphasis is on new work demonstrating the highest level of excellence in design, creative imagination and technical skill.

Applicants must

- * have been living and working in the United Kingdom of Great Britain and Northern Ireland for the last two consecutive years; or
- * be living, working or studying abroad but possess a British passport and have previously lived in the UK for a minimum of 15 years

Each artist can submit up to three pieces for consideration.

Each piece must be predominantly made of glass but can incorporate other materials and must have been made since 1st March 2017.

All items selected for display must be for sale.

DEADLINE for entries - Midnight Sunday 24 February 2019

The Jury for the British Glass Biennale 2019 comprises:

Dr Jane Cook	Chief Scientist, Corning Museum of Glass, USA
Róisín de Buitléar	Artist, Curator & Creative Director of Green Edge, Dublin
Monica Guggisberg	Artist and Designer
Angel Monzon	Founder and Director, Vessel Gallery, London
Cathy Shankland	Exhibitions Officer, Inverness Museum & Art Gallery
Matt Durran	Curator
Hannah Shepherd	Biennale Coordinator

The British Glass Biennale opens 23rd August and closes 28th September 2019

To submit click on: <https://biennale.submittable.com/submit>

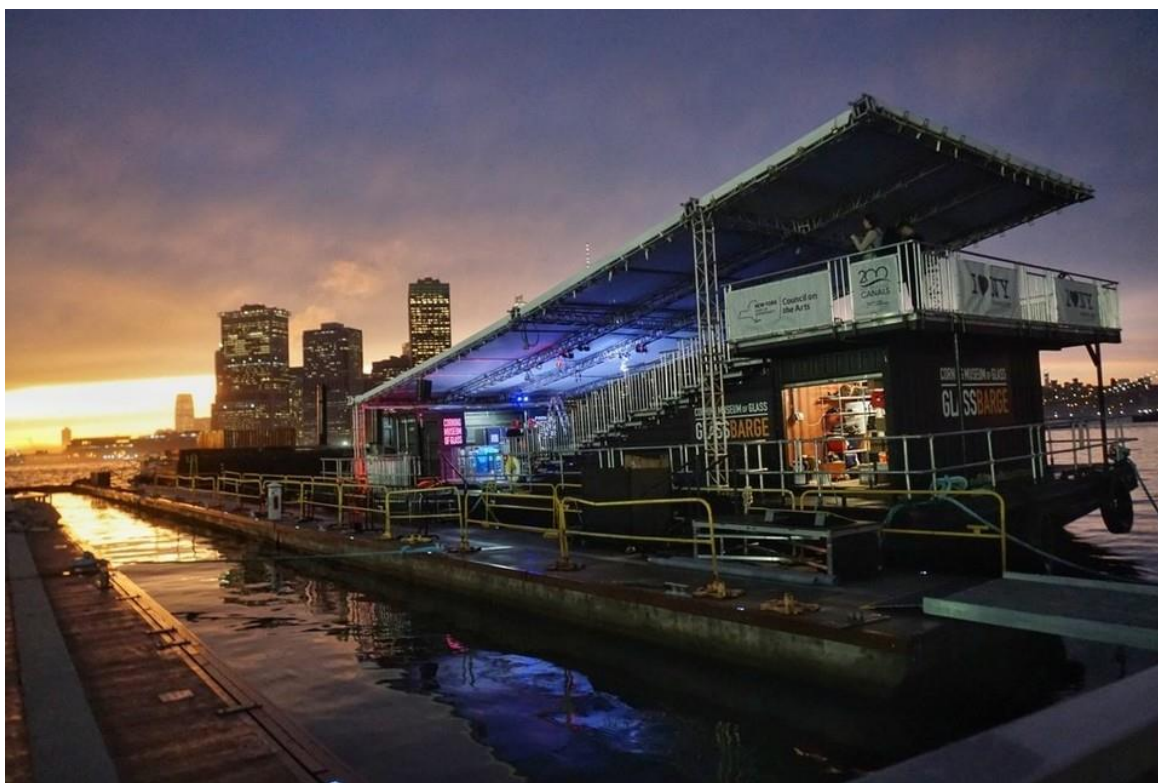
We look forward to receiving your application. <http://www.biennale.org.uk>

Waterford in focus

John M. Hearne, a former teacher, lecturer and master cutter, has launched what is believed to be the first fully illustrated history of Ireland's iconic cut-glass manufacturer. *Waterford Crystal: The Creation of a Global Brand 1700 - 2009* is available in softback or limited edition hardback. Details via info@merriopress.ie

All aboard the glass bottom boat

This amazing vessel has been touting the waterways of the USA all summer demonstrating glassmaking along the way in an epic jaunt that finished right outside Corning Museum of Glass, Corning NY. More at: <https://www.cmog.org/glassmaking/demos/hot-glass-demos/glassbarge>



Corning Museum of Glass

Moving on - a personal farewell

Our very good friend Rory Walsh has kindly informed me that he has decided to seek fame and fortune elsewhere and is moving on to pastures new sometime before Christmas. Many of our readers may be saying '*Rory who?*' so let me explain. Quietly understated but unequivocally proficient Rory is, or at least was, our contact at the Royal Geographical Society (with IBG) and has been supporting my work - and so, by extension, our organisation - along the waterways and around the glass facilities for some years.

I first met him following the launch of my 2010 book *Jewels on the Cut* when he invited me to join him in compiling *The Crystal Mile*, an on-line guided walk along the Stourbridge Canal through the glass industry that it served, which was then incorporated into the rather excellent *Discovering Britain* series www.discoveringbritain.org Rory and I have since worked together on other projects including the Old and New Main Lines around the Chance glassworks site in Smethwick, a viewing point at Gas Street in Birmingham and a short exploration trail around Bumble Hole at Netherton. And it has been a pleasure.

I am confident our productive arrangements with RGS (with IBG), particularly the promotion of our glass heritage from the medium of our canals, will continue to flourish, but for me it won't be quite the same without him. Good luck Rory, and thank you.

CRYSTAL CALENDAR

what's going on and where. Tell us yours

White House Cone museum of glass

Watch this space and check on website.

Red House Glass Cone

Various dates June to December 2018

JAM (Juniors at Museum) programme and 'Let's Do This' for adults

A wide range of activities for kids (hitherto adults as well but this time around they get a separate leaflet), based principally at Red House Glass Cone and Dudley Archives & Local History Centre. Details at www.dudley.gov.uk/see-and-do/museums and via Twitter and Facebook feeds. For large print leaflets ring 01384 815571.

Ruskin Glass Centre

See <http://ruskinglasscentre.co.uk/events/>

Elsewhere around Glassville^{®GF}

Keep them coming in and we'll promote them.

PARISH NOTICES

thank you for contacting us

Neon Workshops newsletter. Event of the year and more. info@neonworkshops.com

Richard Golding's final Fiends newsletter. richardgoldingglass@gmail.com

CGS at IFoG 2019 and call to artists. www.cgs.org.uk

Alison Kinnaird MBE newsletter. Forthcoming exhibition and lecture. alisonkinnaird@gmail.com

2nd annual Amanda Moriarty Memorial Prize. Organised by the Contemporary Glass Society. Application form at <https://www.cgs.org.uk/news/amanda-moriarty-prize-2019>

More soon. In the meantime, Keep it Glass.

Graham Fisher MBE
Press & Publicity,
pp British Glass Foundation
www.britishglassfoundation.org.uk

The White House Survey

The success of this project depends greatly on public support. BGF is very grateful for yours. Please spare a few moments to visit <https://www.surveymonkey.co.uk/r/whcoffsite> and complete the survey form. It will take very little of your time but will be of immense value to us. Thank you.



These are the QR codes for the British Glass Foundation (left) and Virgin Money Giving (right).

Scan to browse the work of the BGF or to make a donation. If you are donating by VMG then please note that VMG's own commission fees, over which BGF has no control, may apply.



Promotional opportunities

Black Country Radio (BCR) is the area's premier local radio station operating on 102.5FM, DAB and on-line. If you are organising a local event that is philanthropic, non-profit (it doesn't matter if there is an admission fee) and community orientated then it can be promoted free of charge via BCR. Visit www.blackcountryradio.co.uk, and click on *Events*.

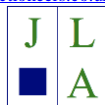
THE BRITISH GLASS FOUNDATION GRATEFULLY ACKNOWLEDGES THE SUPPORT GIVEN BY THE EUROPEAN REGIONAL DEVELOPMENT FUND AND THE HERITAGE LOTTERY FUND



EUROPEAN UNION
Investing in Your Future
European Regional
Development Fund 2007-13



... also JLA Consulting www.jlaconsulting.org.uk Dudley Metropolitan Borough Council www.dudley.gov.uk and Fieldings Auctioneers (Stourbridge) <http://fieldingsauctioneers.co.uk>



Details of other BGF partners, supporters and sponsors at: www.britishglassfoundation.org.uk/the-foundation/

Follow us on *Facebook* and *Twitter*



<https://m.facebook.com/The-White-House-Cone-Museum-of-Glass-1783619608579416/>



<https://twitter.com/whitehousecone>

Please note: These are 'live' links - click to try - but depending on your operating system you may need to insert manually into your browser.

- fin -

Disclaimer

I took my mom on a trip to Dudley Zoo recently to see the chameleons. What a waste of time; we didn't spot one of them. When I got back home there was a letter on the mat with big writing on saying *Do Not Bend*. I thought: *'How do they expect me to pick it up?'* Just as I was getting over the shock of it all, two women came up to me on my doorstep and started blathering on and on about how eating brown bread can ensure your pathway to heaven. Honestly, don't you just hate these Hovis Witnesses? So I thought it was high time we dedicated a *Disclaimer* to the subject of annoyance and things that just generally get on our nerves. I mean, my biggest bugbear is nuisance phone calls, especially the ones from my missus that start: *'You promised to be home from the pub 3 hours ago'* Gimme a break. Anyway ...

GlassCuts is the throbbing hum emanating from the British Exasperation Foundation. It is compiled by a team of irritating individuals using flashing strobes here in the shimmering opulence that is *GlassCuts Disco* and has no other function than to clarify how scientists have revealed that the leading cause of dry skin is towels, promote the brand new 'Divorced Barbie' doll that comes complete with all of Ken's possessions plus his house and pension, and perhaps even say a bit about glass.

Whilst every effort is made to ensure accuracy, no responsibility etc etc ... (usual psychotics apply).

This email is sent to you solely on the basis that you sympathise with my purchase of the world's most useless Thesaurus (not only was it terrible, it was terrible and even terrible) but if you do not wish to receive further *GlassCuts* then either explain why my uncle drank varnish by mistake and had a horrible death but a lovely finish or send an email marked: *'My mate's son Qwertyuiop forgave his father when he realised easy to spell his own name on a computer'* to bqf@britishglassfoundation.org.uk A brief indication as to why we are no longer your favourite irritants would be appreciated.

BGF welcomes onward transmission to anyone you feel may be highly annoyed in following our irksome progress. I set the standard by telling you how I would like to die peacefully in my sleep like my grandfather. Not screaming in terror like his passengers. Similarly if you have anything you consider may be worth our colleagues out there in the *Wonderful World of Pestilence*®GF then send it to BGF at the usual address.

Meanwhile, back at my place, I took sympathy on the Witnesses and invited them in for a cup of tea. *'Now'* I said: *'What is the message about eternal life that your bring?'* They looked at each other goggle-eyed before the one replied: *'I dunno. We've never got this far inside before'*. Oh dear.

And finally, to celebrate this 137th edition of our bulletin we are opening a telephone hotline for a lucky winner to receive either a £250 voucher for a meal at *GlassCuts Towers* or see an Elvis tribute at a local nightclub. Press 1 for the money ...



British Glass Foundation

www.britishglassfoundation.org.uk

Registered Charity No 1139252 / Registered Company No 7344291