

# GlassCuts

The Journal of the British Glass Foundation



Edition: 139  
Dated: 6.2.19

## WHITE HOT

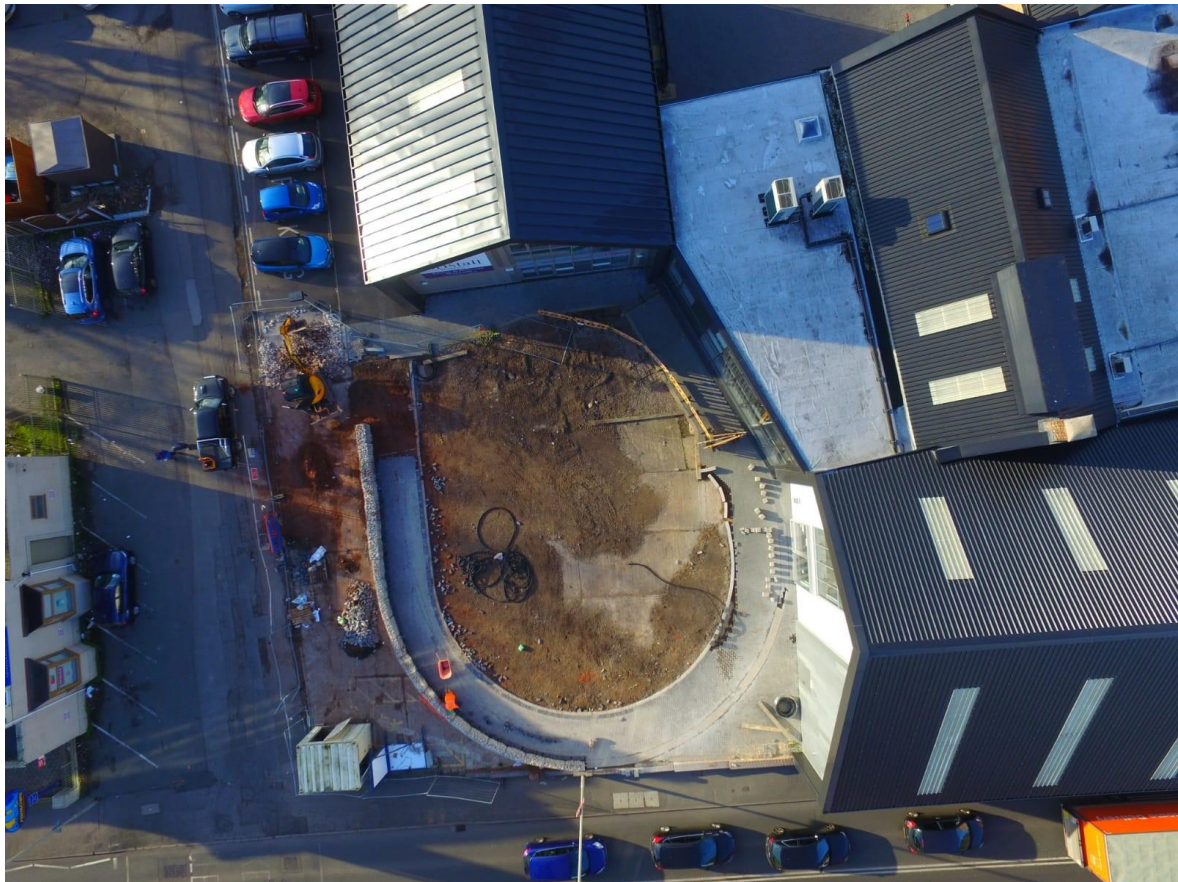
news from *WHCmog*

### A message from the Editorial team

We can announce that partners including BGF and Dudley MBC will be meeting again soon for further round-table discussions on developments at [WHCmog](#) and, as always, we prefer our readership to know first.

The wheels turn tortuously slowly and whilst we cannot ever predict the outcome of such meetings they are always constructive. We remain optimistic that matters are very much progressing in the forward direction.

More on this when we know ourselves.



## GIFTS AND DONATIONS

to BGF funds, for which we thank you

In addition to cash donations (*see below as to how you can do this*), readers are reminded of the opportunity to secure a lasting *memento* in the new museum by way of purchasing one of Allister Malcolm's engraved glass plaques. Details via the usual BGF address.

BGF routinely reviews its donation procedures. Enhancements are announced as and when but in the meantime we continue to accept donations direct by cash, cheque and BACS. For donations by BACS our bank details are:

**HSBC Bank**  
**Branch Identifier Code: MIDLGB2108U**  
**Sort code: 40-38-07**  
**Account number: 72076780**

BGF recognizes those who wish to donate via *Virgin Money Giving*. Go via the *Virgin Money Giving* QR code listed below or click here: <http://uk.virginmoneygiving.com/charity-web/charity/finalCharityHomepage.action?charityId=1005650> **Potential donors are advised that contributions via VMG may invoke commission fees that are beyond the control of BGF.**

Donations made by a UK taxpayer can attract Gift Aid, which is a great supplement to our funds and costs the donor nothing. All we need to claim this is your Gift Aid declaration; contact us for details if you have not already supplied us with relevant particulars.

*Please note:* In acknowledging the support of donors **GlassCuts** generally will not reveal either the details of the donor or the amount donated unless the donor indicates otherwise or the circumstances are in the public domain or public interest. This does not preclude the possibility of details, including the amount donated and/or the donor's particulars, appearing elsewhere in BGF material.

All donations are greatly appreciated. BGF is entirely philanthropic and its Trustees are unremunerated. BGF policy is that all monies received go directly to the cause. Donations can be as one-off contributions or standing order.

## RICH MIXTURE

news from elsewhere

### IFoG & 2019 Biennale update

A new prize for the 2019 Biennale has been announced.

The Glass Arts Society (GAS) are sponsoring an 'International Artists Award' with a prize of 1,500 dollars. Founded in 1971 GAS is a Seattle-based, non-profit international organisation to encourage excellence, advance education, promote the appreciation and development of the glass arts and to support the worldwide community of glass artists. It has a membership of over 2,000 drawn from over 40 countries.

The winning piece will be selected by the GAS board and announced at the opening ceremony on 22<sup>nd</sup> August. The prize winner will also benefit from joint promotion by GAS, the British Glass Biennale and the International Festival of Glass and will be invited to present at the GAS conference in 2020. The selection will be made from the digital images of work submitted by the Biennale artists. All works selected by the Biennale jury and shown in the exhibition are eligible.

IFoG Director Janine Christley said: *'I am so delighted with this new collaboration. GAS was such an inspiration when we launched the British Glass Biennale and I have long admired their commitment to glass artists across the world. This is a momentous day for the Biennale.'*

Brandi P. Clark, Interim Executive Director stated: *'Supporting artists from all over the globe is at the core of the Glass Art Society's mission, and working with the International Festival of Glass for the British Glass Biennale is a great opportunity for us to support international artists in a new and significant way. We are thrilled with this new partnership.'*

Entry deadline is midnight 24<sup>th</sup> February via <https://biennale.submittable.com/submit> with more on IFoG and the Biennale via the usual channels as reported *passim*.

## Information please

Mrs Howarth of The Wordsley School has contacted us with an appeal for information. She tells us: *'I am undertaking a research project with our Year 7 pupils (aged 11) on the Stourbridge Glass Industry. Our 4 houses in school are named after local glass firms - Webb, Doulton, Tudor and Stuart. I am seeking further information on Tudor in particular and more generally the working conditions in the factories. I would appreciate the assistance of your readers.'*

No problem; happy to oblige. We have, of course, pointed Mrs Howarth in the direction of contacts we know but there are bound to be many more out there who can fill in loads of gaps. If you are one of them, then contact Mrs Howarth via [hhowarth@wordsley.dudley.sch.uk](mailto:hhowarth@wordsley.dudley.sch.uk) or get in touch with BGF at the usual address and we'll pass the information on. Please mention *GlassCuts* if you contact her direct. Thanks.

## Mayoral appeal



Although the position of Mayor changes hands annually the support BGF receives from that office has been unflinching so we like to show our appreciation by reciprocating where we can.

This year's incumbent, Councillor Alan Taylor has announced the three local charities that he will be supporting. In no particular order they are:

**Headway Black Country** supports people and family members coping with an acquired brain injury. [www.headwayblackcountry.co.uk](http://www.headwayblackcountry.co.uk)

**White House Cancer Support** (no connection with *White House Cone museum of glass* - Ed) providing help, emotional support and information to people with cancer, their families, friends and carers. [www.support4cancer.org.uk](http://www.support4cancer.org.uk)

**Hope Centre** is a non-profit organisation in Halesowen dedicated to charity work, providing a place where people can access activities at their point of need [www.hopecentrebelieve.org](http://www.hopecentrebelieve.org)

Cllr Taylor tells us: *'To raise funds for these charities I will be hosting the Mayor's Ball and Civic Awards on Friday 5<sup>th</sup> April at The Copthorne, Brierley Hill. A table of 10 is £350, tickets online are £35.10 plus booking fee. More information at [www.mayorofdudley.org.uk/mayors-ball-civic-awards](http://www.mayorofdudley.org.uk/mayors-ball-civic-awards)*

*We are looking for donations for an auction, raffle and tombola, items such as luxury hampers, wine, chocolates, gift or experience vouchers, electronics etc.*

*There is also an opportunity for members of the public to contribute direct to the awards by nominating any of the wonderful unsung heroes or groups whose work, research or volunteering you think deserves recognition. There are 6 categories: Arts, Education, Sport, Environment, Business and Community Spirit and nominations can be made via [www.mayorofdudley.org.uk](http://www.mayorofdudley.org.uk) from 7<sup>th</sup> February onwards'.*

If you are able to help or would like to attend the Mayor's Ball and Civic Awards contact the Mayoral team on 01384 817449 or email [jessica.haines@dudley.gov.uk](mailto:jessica.haines@dudley.gov.uk)

## CRYSTAL CALENDAR

what's going on and where. Tell us yours

### **White House Cone museum of glass**

Watch this space and check on website.

### **Red House Glass Cone**

Various dates January - June to December 2019

*JAM (Juniors at Museum) programme and 'Let's Do This' for adults*

A wide range of activities for kids - adults as well but they get a separate leaflet - based principally at Red House Glass Cone and Dudley Archives & Local History Centre. Details at [www.dudley.gov.uk/see-and-do/museums](http://www.dudley.gov.uk/see-and-do/museums) and via Twitter and Facebook feeds. For large print leaflets ring 01384 815571.

### **Ruskin Glass Centre**

See <http://ruskinglasscentre.co.uk/events/>

The British Glass Biennale opens 23<sup>rd</sup> August and closes 28<sup>th</sup> September 2019

Submit applications via: <https://biennale.submittable.com/submit>

More information at: <http://www.biennale.org.uk>

### **Elsewhere around Glassville<sup>®GF</sup>**

24<sup>th</sup> February 2019

*Glass Fair @ Knebworth*

Knebworth House Hertfordshire, SG3 6PY

[www.cambridgeglassfair.com](http://www.cambridgeglassfair.com)

[www.specialistglassfairs.com](http://www.specialistglassfairs.com)

12<sup>th</sup> May 2019

*The National Glass Fair*

National Motorcycle Museum B92 0EJ

[www.nationalglassfair.com](http://www.nationalglassfair.com)

[www.specialistglassfairs.com](http://www.specialistglassfairs.com)

## PARISH NOTICES

thank you for contacting us

*Alan J. Poole monthly newsletter.* Feb edn. [alanjpoole@aol.com](mailto:alanjpoole@aol.com)

More soon. In the meantime, Keep it Glass.

Graham Fisher MBE

Press & Publicity,

pp British Glass Foundation

[www.britishglassfoundation.org.uk](http://www.britishglassfoundation.org.uk)

### The White House Survey

The success of this project depends greatly on public support. BGF is very grateful for yours. Please spare a few moments to visit <https://www.surveymonkey.co.uk/r/whcoffsite> and complete the survey form. It will take very little of your time but will be of immense value to us. Thank you.



These are the QR codes for the British Glass Foundation (left) and Virgin Money Giving (right).

Scan to browse the work of the BGF or to make a donation. If you are donating by VMG then please note that VMG's own commission fees, over which BGF has no control, may apply.



### Promotional opportunities

Black Country Radio (BCR) is the area's premier local radio station operating on 102.5FM, DAB and on-line. If you are organising a local event that is philanthropic, non-profit (it doesn't matter if there is an admission fee) and community orientated then it can be promoted free of charge via BCR. Visit [www.blackcountryradio.co.uk](http://www.blackcountryradio.co.uk), and click on *Live - Events*.

**THE BRITISH GLASS FOUNDATION GRATEFULLY ACKNOWLEDGES THE SUPPORT GIVEN BY THE EUROPEAN REGIONAL DEVELOPMENT FUND AND THE HERITAGE LOTTERY FUND**



**EUROPEAN UNION**  
Investing in Your Future  
European Regional  
Development Fund 2007-13



... also JLA Consulting [www.jlaconsulting.org.uk](http://www.jlaconsulting.org.uk) Dudley Metropolitan Borough Council [www.dudley.gov.uk](http://www.dudley.gov.uk) and Fieldings Auctioneers (Stourbridge) <http://fieldingsauctioneers.co.uk>



*Details of other BGF partners, supporters and sponsors at: [www.britishglassfoundation.org.uk/the-foundation/](http://www.britishglassfoundation.org.uk/the-foundation/)*

### Follow us on Facebook and Twitter



<https://m.facebook.com/The-White-House-Cone-Museum-of-Glass-1783619608579416/>



<https://twitter.com/whitehousecone>

*Please note: These are 'live' links - click to try - but depending on your operating system you may need to insert manually into your browser.*

## Disclaimer

It's a sobering thought that Adam and Eve were the first people in history not to read the Apple terms and conditions. Me? Well, I recently bought some of that latest Elvis Costello Mediterranean sausage. It was delicious and I can tell you that olive salami is here to stay. (*just say that last bit quick - Ed*). So, for 2019, we thought it was high time we dedicated a [Disclaimer](#) to the theme of unintended consequences. I mean, there's that moment when you put your steak on the grill and your mouth waters from that amazing smell. Do vegans feel the same when they mow the grass? Anyway ...

[GlassCuts](#) is the repository of thoughtfulness revolving in the ether of the British Glass Foundation that answers questions such as: *'why does my washing machine not pump out the water? And, more importantly, where's my cat?'*

It is compiled by a team of philanderers (*I think you mean philosophers - Ed*) using the latest techniques of statistical analysis that can now predict with unerring accuracy that 5 out of 6 people think that Russian Roulette is perfectly safe, and has no other function than identify why when you buy a new boomerang it is so difficult to throw the old one away, explain how when a naked woman robbed our local Nat West recently no-one could remember her face and perhaps even say a bit about glass.

Whilst every effort is made to ensure accuracy, no responsibility etc etc ... (usual psychiatrists appointments apply).

This email is sent to you solely on the basis that although money cannot buy you happiness you'd still feel a lot more comfortable crying in a new BMW than on a pushbike but if you do not wish to receive further [GlassCuts](#) then either explain why the USA Secret Service are so embarrassed at having to change their commands (it used to be *'Get down Mr President!'* but now it's *'Donald Duck!'* - Ed) or send an email marked: *'So much has changed since my girlfriend told me we're having a baby - for instance my name, address and telephone number'* - to [bqf@britishglassfoundation.org.uk](mailto:bqf@britishglassfoundation.org.uk). A brief indication as to why we are no longer your favourite humourists would be appreciated.

BGF welcomes onward transmission to anyone you feel may appreciate our mordant satire, the purpose of which is to simultaneously comfort the afflicted whilst afflicting the comfortable.. Similarly if you have anything you consider may be worth our colleagues out there in the *Wonderful World of Don'tTakeLifeTooSeriously*<sup>®BGF</sup> then send it to BGF at the usual address.

Meanwhile, for those of you intending to see the latest Queen movie, be aware there is there is a terrible storm scene with thunderbolts and lightening, very very frightening,

And finally, a genuine moment of true happiness for my family to start off the New Year. An uncle of mine, a keen football fan, needed a bone marrow transplant. We searched the world and eventually found a match in Argentina. It was a success, so our sincere thanks go to Diego Marrow Donor. *Boom boom!*



[www.britishglassfoundation.org.uk](http://www.britishglassfoundation.org.uk)

Registered Charity No 1139252 / Registered Company No 7344291