

WHITE HOT

news from WHCmog

Ticking over

Here's a few forthcoming attractions at WHCmog and they're all taking place over the weekend of 15th -16th June 2019.

In no particular order ...

Our friends at the Lace Making Guild, based just a few yards down the road from us, are running a workshop at our place. Full details in due course; see more at <https://www.laceguild.org>

Resident Glassmaker Allister Malcolm is running a hand-casting workshop. He's done a lovely 'flyer' which is reproduced below.

And finally, our Volunteer Coordinator Julie Nicholls has rallied her troops into putting on a sale of glass to help raise funds for BGF. All of the glassware has been donated for the purpose and so 100% of the money will go into the BGF kitty. To top it all, Julie and her team will be offering tea, coffee and the possibility of a piece of mighty fine home made cake. Now come on, who else would treat you this good?

It's all at WHCmog over the weekend of 15th - 16th June and admission is free.



Handcasting Sessions
Allister Malcolm Glass Ltd

June 15th and 16th 10am - 3pm

'I remember when your tiny hand held onto mine'...

Ever wondered where all the time went?
Children grow so fast

Here at Allister Malcolm Glass Ltd we offer a unique way of preserving those memories in glass.

Marvel as your child's hand or foot print is filled with molten glass to create a memento to cherish forever!

Glass prints can be signed/ dated or inscribed with a short message.

All for only £27

Call us on 07961867206 to book your slot
info@allistermalcolm.com

White House Cone Museum of Glass
High Street, Wordsley, DY8 4FB

'It was amazing to watch the glass prints form from molten glass. We watched the whole process from start to finish. It was a bit tricky at first to get Effie to push her hand into the sand to make the mould but Allister and his team were very patient and the results are brilliant. We had extras done for the grandparents...they make excellent gifts.'
T.Spear, Finchfield



Landscaping update

We have been giving progress updates on the landscaping on the frontage at WHCmog for some time (*GlassCuts passim*) and so we are delighted to announce that it is officially done and dusted. Being on the main road between Stourbridge and Wolverhampton the museum will attract many passing visitors as well as those who live locally.

The work has been made possible courtesy of Grant Funding of £30,000 from Enovert Community Trust and £18,000 from Ibstock Enovert Trust. BGF would like to express considerable gratitude to both and we are pleased to append their logos on our sponsor panel, at footer.

Graham Knowles, Chairman of BGF, told us: *'We have one of the finest collections of Stourbridge glass in the world. Many local people have relatives who worked at the Stuart Crystal factory and I am sure they will be pleased with the transformation of the whole site. The vision for the museum is the creation of a visitor attraction for tourists and local people, retaining and discovering their rich heritage, a place that inspires imagination in the young and innovation in the glass industry with glass making taking place on site to raise the profile of our glass making heritage.'*

Angela Haymonds, Trust Secretary at Enovert Community Trust and Ibstock Enovert Trust, said: *'The Trustees were delighted to support the British Glass Foundation with two grants towards the landscaping project, which has created a wonderful public open space at the front of the new museum that provides opportunities for outdoor leisure and exploration. Stourbridge is renowned for its glass making tradition and the museum will provide a fantastic venue to celebrate the area's unique glass heritage.'*



GIFTS AND DONATIONS

to BGF funds, for which we thank you

* We are delighted to have received a donation from collector and enthusiast John Westmoreland in the form of a collection of his books that he has kindly donated to BGF. When we say 'books' we are talking here of several boxes full so it is quite literally a sizeable gift. Some of these will be of relevance to our archives, others will be offered for sale in due course with all funds to BGF. In the meantime a list of titles is available from BGF via the usual channels. Our sincere thanks to John for his most generous contribution.

* As reported above, much appreciation and thanks are due to Enover Community Trust and Ibstock Enover Trust for their support in financing the landscaping at WHCmog.

In addition to cash donations (*see below as to how you can do this*), readers are reminded of the opportunity to secure a lasting *memento* in the new museum by way of purchasing one of Allister Malcolm's engraved glass plaques. Details via the usual BGF address.

BGF routinely reviews its donation procedures. Enhancements are announced as and when but in the meantime we continue to accept donations direct by cash, cheque and BACS. For donations by BACS our bank details are:

HSBC Bank
Branch Identifier Code: MIDLGB2108U
Sort code: 40-38-07
Account number: 72076780

BGF recognizes those who wish to donate via *Virgin Money Giving*. Go via the *Virgin Money Giving* QR code listed below or click here: <http://uk.virginmoneygiving.com/charity-web/charity/finalCharityHomepage.action?charityId=1005650> **Potential donors are advised that contributions via VMG may invoke commission fees that are beyond the control of BGF.**

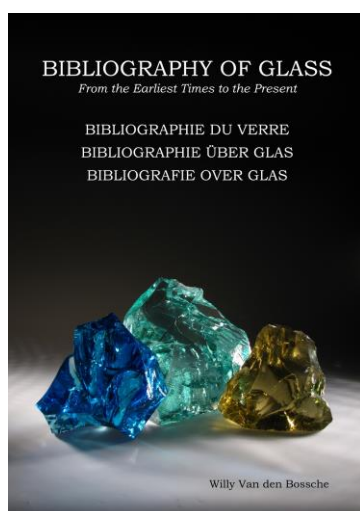
Donations made by a UK taxpayer can attract Gift Aid, which is a great supplement to our funds and costs the donor nothing. All we need to claim this is your Gift Aid declaration; contact us for details if you have not already supplied us with relevant particulars.

Please note: In acknowledging the support of donors **GlassCuts** generally will not reveal either the details of the donor or the amount donated unless the donor indicates otherwise or the circumstances are in the public domain or public interest. This does not preclude the possibility of details, including the amount donated and/or the donor's particulars, appearing elsewhere in BGF material.

All donations are greatly appreciated. BGF is entirely philanthropic and its Trustees are unremunerated. BGF policy is that all monies received go directly to the cause. Donations can be as one-off contributions or standing order.

RICH MIXTURE

news from elsewhere



Hard copy bibliography

Following on from our report in GC141 featuring Willy Van den Bossche's donation of an electronic version of his comprehensive *Bibliography of Glass*, we would remind our readers that Willy donated a hard-copy to BGF some while ago. This is held at [WHCmog](#) and is open to public viewing and reference at any reasonable time.

Nurturing the seeds

Lynn Baker is a familiar face presence around the Stourbridge Glass Quarter with appearances at the International Festival of Glass and as a regular visitor to the hot studio at [WHCmog](http://www.whcmog.com). But she is actually based in Lincoln and her latest exhibition is taking place over that way soon. *Seeds of Inspiration: stories from the allotment* features some stunning examples of Lynn's work and on this occasion she is joined by Jeanette Killner who does some equally impressive interpretations in metal. The dates are 23rd April - 5th May 2019 at Sam Scorer Gallery, Drury Lane, Lincoln LN1 3BN where the doors will be open daily 10:00am - 4:00pm. <http://www.lynnbakerglass.co.uk>

SEEDS OF INSPIRATION: STORIES FROM THE ALLOTMENT

LYNN BAKER

GLASS



JEANETTE KILLNER

METAL



23 APRIL – 5 MAY 2019
SAM SCORER GALLERY, DRURY LANE, LINCOLN

OPEN DAILY 10.00 – 4.00
PRIVATE VIEW: TUE 23 APRIL, 3.00 – 6.00

Carnival update

Following on from news in GC141 of the Carnival Glass Society's gathering (see [Crystal Calendar](#) below) we have been requested to add that between 2:00pm - 5:00pm on Friday 12th April members of the Carnival Glass Society Research Team will be pleased to answer questions. They will also be offering a free copy of the Society's *Concise Guide to Carnival Glass*, with photographs and information covering the inspiration and history of carnival glass spanning more than 100 years. www.thecgs.co.uk



CRYSTAL CALENDAR

what's going on and where. Tell us yours

White House Cone museum of glass

Watch this space and check on website.

Red House Glass Cone

Various dates January - June to December 2019

JAM (Juniors at Museum) programme and 'Let's Do This' for adults

A wide range of activities for kids - adults as well but they get a separate leaflet - based principally at Red House Glass Cone and Dudley Archives & Local History Centre. Details at www.dudley.gov.uk/see-and-do/museums and via Twitter and Facebook feeds. For large print leaflets ring 01384 815571.

Ruskin Glass Centre

See <http://ruskinglasscentre.co.uk/events/>

The British Glass Biennale opens 23rd August and closes 28th September 2019

Submit applications via: <https://biennale.submittable.com/submit>

More information at: <http://www.biennale.org.uk>

Elsewhere around Glassville^{®GF}

12th May 2019

The National Glass Fair

National Motorcycle Museum B92 0EJ

www.nationalglassfair.com / www.specialistglassfairs.com

Running to 28th April 2019

Carnival Glass exhibition and tour of house

78 Derngate, Northampton, NN1 1UH

www.thecgs.co.uk

PARISH NOTICES

thank you for contacting us

Alan J. Poole monthly newsletter April edn. alanjpoole@aol.com

More soon. In the meantime, Keep it Glass.

Graham Fisher MBE

Press & Publicity,

pp British Glass Foundation

www.britishglassfoundation.org.uk

The White House Survey

The success of this project depends greatly on public support. BGF is very grateful for yours. Please spare a few moments to visit <https://www.surveymonkey.co.uk/r/whcoffsite> and complete the survey form. It will take very little of your time but will be of immense value to us. Thank you.



These are the QR codes for the British Glass Foundation (left) and Virgin Money Giving (right).

Scan to browse the work of the BGF or to make a donation. If you are donating by VMG then please note that VMG's own commission fees, over which BGF has no control, may apply.



Promotional opportunities

Black Country Radio broadcasts throughout the Black Country on 102.5 FM and also via DAB and on-line around the world. If your event satisfies the criteria of not-for-profit, charitable or philanthropic and is community orientated there is no charge.

Go to www.blackcountryradio.co.uk hover over 'Live' and submit the form you'll find under *Events*. Your announcement will then appear on the *Events Guide*. Allow sufficient notice and the event may be 'voiced' and broadcast live on air during daytime broadcasting. Depending on the number of events, yours might be broadcast several times; there's no guarantee but it should appear at least once. Meanwhile it stays on the *Events Guide* listings on the world-wide web until the day itself.

THE BRITISH GLASS FOUNDATION GRATEFULLY ACKNOWLEDGES THE SUPPORT GIVEN BY THE EUROPEAN REGIONAL DEVELOPMENT FUND AND THE HERITAGE LOTTERY FUND



EUROPEAN UNION
Investing in Your Future
European Regional
Development Fund 2007-13



... also JLA Consulting, Dudley MBC, Fieldings Auctioneers (Stourbridge) Enover Community Trust, Istock Enover Trust.



Details of other BGF partners, supporters and sponsors at: www.britishglassfoundation.org.uk/the-foundation/

Follow us on Facebook and Twitter



<https://m.facebook.com/The-White-House-Cone-Museum-of-Glass-1783619608579416/>



<https://twitter.com/whitehousecone>

Please note: These are 'live' links - click to try - but depending on your operating system you may need to insert manually into your browser.

Disclaimer

My Doctor recently gave me the devastating diagnosis that I was a Transfinancial. Apparently it means I am a rich person born into a poor person's body. It depressed me to the extent I thought I would end it all by taking a whole box of Paracetamol but after the first two I felt much better. There's irony for you. (Readers in the USA and Germany, give us a call and we'll explain what that is.) So, I thought it was high time we dedicated a [Disclaimer](#) to the subject of money, or in my case the lack of it. Life can indeed be costly and I recall the time I lost my best friend and drinking buddy when he tragically got his finger caught in a wedding ring. Anyway ...

[GlassCuts](#) is the dormant savings account (but still generating interest. *Boom boom!* - Ed) managed with peerless RSB efficiency by a team of graduates from the Robert Maxwell School of Fiscal Probity. We still revere the man for his famous last words: '*Stainless steel boat safety rails only £5.99 at B&Q.*'

It is compiled by a team of paper millionaires (*source*: Bank of Monopoly) here in the shimmering opulence that is a closed branch of Barclays, now paradoxically a Poundland (I got the sack from there once; I kept getting the prices wrong) and has no other function than to set an internationally-recognised Libor rate between the financial epicentres of Gornal (Lower) and Tipton, explain why if you take away the looks, money, intelligence, charm and success there's really no real difference between me and George Clooney and perhaps even say a bit about glass.

Whilst every effort is made to ensure ackeracy, no responsibility etc etc ... (usual ISAs apply)

This email is sent to you solely on the basis that money talks, although all mine ever says is goodbye, but if you do not wish to receive further [GlassCuts](#) then send us a brief dissertation why nappies, politicians and financial advisers should all be changed regularly, and for much the same reason, to bgf@britishglassfoundation.org.uk

BGF welcomes onward transmission to anyone you feel may appreciate our stocks and shares. Similarly if you have anything you consider may be worth our colleagues out there in the *Wonderful World of Dosh* ^{©GF} then send it to BGF at the usual address.

Meanwhile, here's a bit of news about my mate who still hasn't reported the theft of his Visa card because the thief is spending less than his wife. Seems reasonable to me.

And finally, to try and make ends meet I have decided to sell my expensive Dyson. Well, it was only collecting dust. *Taxi!*



www.britishglassfoundation.org.uk

Registered Charity No 1139252 / Registered Company No 7344291