

GlassCuts

The Journal of the British Glass Foundation



Edition: 144
Dated: 4.6.19

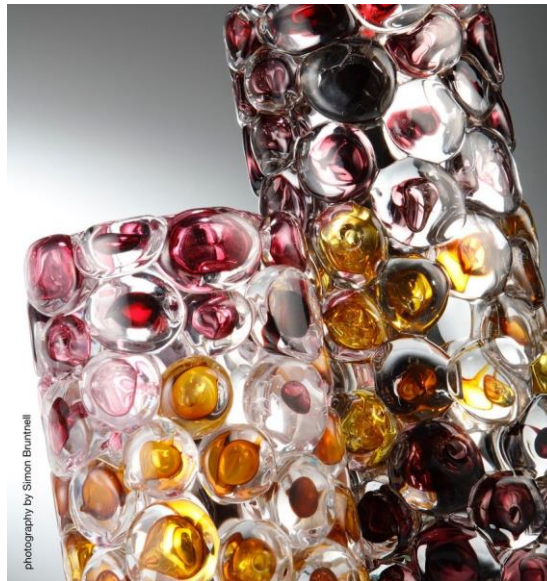
WHITE HOT

news from *WHCmog*

Moving images

BGF continues to explore ways in which to promote glass and its practitioners, so we are excited to show off what can be done via the conduit of social media. With thanks to master glassmaker Allister Malcolm www.allistermalcolm.com and ace lens-man Simon Bruntnell www.bruntnell-astley.com take a look at this ...

<https://www.facebook.com/224069450941299/posts/2743843885630497?s=100002338425126&sfns=mo>



And in similar vein, courtesy of Professor Keith Cummings <http://heartofenglandglass.co.uk/further-higher-education/wolverhampton-university/research-at-wolverhampton/prof-keith-cummings/> and the same S Bruntnell Esq., prepare to be amazed by this ...

<https://vimeo.com/337546162>

Stunning stuff. Congratulations to all concerned.



IFoG news at [WHCmog](#)

Events are taking shape for this year's International Festival of Glass and here at [White House Cone museum of glass](#) we are looking to participate as fully as possible this side of achieving our full museum status. Hot off the press is this, again with acknowledgements to Simon Bruntnell for the update ...

23rd - 26th August

Volunteers antique glass sale. A genteel event accompanied by tea and cakes.

23rd August - 8th September

Artists in the House. A 'pop-up' exhibition featuring the works of Allister Malcolm, Darren Weed, Maddy Hughes, Morag Reekie, Guergana Sabkova, Hannah Gibson, Jamie Bavington, Jemma Finch, Jessamy Kelly, Karen Browning, Niki Williams, Sandra Young, Shannon Halliwell and Tracy Nicholls. (**Note times:** 23rd - 26th August 10:30am - 4:00pm; 27th August - 8th September 12:00noon - 4:00pm).

GIFTS AND DONATIONS

to BGF funds, for which we thank you

In addition to cash donations (*see below as to how you can do this*), readers are reminded of the opportunity to secure a lasting *memento* in the new museum by way of purchasing one of Allister Malcolm's engraved glass plaques. Details via the usual BGF address.

BGF routinely reviews its donation procedures. Enhancements are announced as and when but in the meantime we continue to accept donations direct by cash, cheque and BACS. For donations by BACS our bank details are:

HSBC Bank
Branch Identifier Code: MIDLGB2108U
Sort code: 40-38-07
Account number: 72076780

BGF recognizes those who wish to donate via *Virgin Money Giving*. Go via the *Virgin Money Giving* QR code listed below or click here: <http://uk.virginmoneygiving.com/charity-web/charity/finalCharityHomepage.action?charityId=1005650> **Potential donors are advised that contributions via VMG may invoke commission fees that are beyond the control of BGF.**

Donations made by a UK taxpayer can attract Gift Aid, which is a great supplement to our funds and costs the donor nothing. All we need to claim this is your Gift Aid declaration; contact us for details if you have not already supplied us with relevant particulars.

Please note: In acknowledging the support of donors **GlassCuts** generally will not reveal either the details of the donor or the amount donated unless the donor indicates otherwise or the circumstances are in the public domain or public interest. This does not preclude the possibility of details, including the amount donated and/or the donor's particulars, appearing elsewhere in BGF material.

All donations are greatly appreciated. BGF is entirely philanthropic and its Trustees are unremunerated. BGF policy is that all monies received go directly to the cause. Donations can be as one-off contributions or standing order.

RICH MIXTURE

news from elsewhere

The 'flanel panel'

That's an in-house reference to the notes, credits and listings that appear in just about every magazine and bulletin. Ours is no exception so do please take a peek at the coloured boxes toward the footer, and in particular the latest addition regarding volunteers **in orange**.

CRYSTAL CALENDAR

what's going on and where. Tell us yours

White House Cone museum of glass

15th & 16th June 10:00am - 3:00pm

Handcasting Sessions by Allister Malcolm
Lace Guild Workshop
Sale of Glass by Volunteers
Refreshments Available provided by Volunteers
Contact: Allister Malcolm info@allistermalcolm.com

Red House Glass Cone

Various dates June to December 2019

JAM (Juniors at Museum) programme and 'Let's Do This' for adults

A wide range of activities for kids - adults as well but they get a separate leaflet - based principally at Red House Glass Cone and Dudley Archives & Local History Centre. Details at www.dudley.gov.uk/see-and-do/museums and via Twitter and Facebook feeds. For large print leaflets ring 01384 815571.

Ruskin Glass Centre

See <http://ruskinglasscentre.co.uk/events/>

The British Glass Biennale opens 23rd August and closes 28th September 2019

Submit applications via: <https://biennale.submittable.com/submit>

More information at: <http://www.biennale.org.uk>

Elsewhere around Glassville^{®GF}

No notifications this period.

PARISH NOTICES

thank you for contacting us

Alan J. Poole monthly newsletter, latest edn. alanjpoole@aol.com

Hidden Gestures. Cathryn Schilling solo show. 4th June – 9th July 2019. Vessel Gallery, London.
www.vesselgallery.com

More soon. In the meantime, Keep it Glass.

Graham Fisher MBE
Press & Publicity,
pp British Glass Foundation
www.britishglassfoundation.org.uk

Getting involved

Would you like to be part of a vibrant and enthusiastic group of volunteers dedicated to supporting the British Glass Foundation and its work at White House Cone museum of glass?

Specialist skills or knowledge are welcome but not essential. We are committed to equal opportunities and full training will be given where necessary. To find out more, contact us via the usual address and we will be delighted to do the rest.

The White House Survey

The success of this project depends greatly on public support. BGF is very grateful for yours. Please spare a few moments to visit <https://www.surveymonkey.co.uk/r/whcoffsite> and complete the survey form. It will take very little of your time but will be of immense value to us. Thank you.

Promotional opportunities

Black Country Radio broadcasts throughout the Black Country on 102.5 FM and also via DAB and on-line around the world. If your event satisfies the criteria of not-for-profit, charitable or philanthropic and is community orientated there is no charge.

Go to www.blackcountryradio.co.uk hover over 'Live' and submit the form you'll find under *Events*. Your announcement will then appear on the *Events Guide*. Allow sufficient notice and the event may be 'voiced' and broadcast live on air during daytime broadcasting. Depending on the number of events, yours might be broadcast several times; there's no guarantee but it should appear at least once. Meanwhile it stays on the *Events Guide* listings on the world-wide web until the day itself.



These are the QR codes for the British Glass Foundation (left) and Virgin Money Giving (right).

Scan to browse the work of the BGF or to make a donation. If you are donating by VMG then please note that VMG's own commission fees, over which BGF has no control, may apply.



THE BRITISH GLASS FOUNDATION GRATEFULLY ACKNOWLEDGES THE SUPPORT GIVEN BY THE EUROPEAN REGIONAL DEVELOPMENT FUND AND THE HERITAGE LOTTERY FUND



EUROPEAN UNION
Investing in Your Future
European Regional
Development Fund 2007-13



... also JLA Consulting, Dudley MBC, Fieldings Auctioneers (Stourbridge) Enover Community Trust, Ibstock Enover Trust.



Details of other BGF partners, supporters and sponsors at: www.britishglassfoundation.org.uk/the-foundation/

Follow us on Facebook and Twitter



<https://m.facebook.com/The-White-House-Cone-Museum-of-Glass-1783619608579416/>



<https://twitter.com/whitehousecone>

Please note: These are 'live' links - click to try - but depending on your operating system you may need to insert manually into your browser.

Disclaimer

I think my interest in canals goes back to my earliest childhood - I was very young when my dad put me in a bag and tried to throw me in one; luckily I was rescued by a passing kitten. That's life, really. You just have to plough your own furrow and ignore what other people think. So I thought it was high time we dedicated a *Disclaimer* to personal aspirations. I mean, look at Beethoven. Just because he was deaf they told him he'd never make music, but he didn't listen. Anyway ...

GlassCuts is the simply ace, cannot be bettered, magazine of the British Self-confidence Society. It is compiled by those maestros of editorial ability here in the shimmering opulence that is *GlassCuts Towers* and has no other function than to set your bar very high (or very low for prospective limbo dancers), convince you that our own brand of genius is 1% inspiration, 1% perspiration and 98% desperation, and perhaps even say a bit about glass.

Whilst every effort is made to ensure accuracy, no responsibility etc etc ... (usual gulf between real and imagined talent applies).

This email is sent to you solely on the basis that you observe Ash Wednesday, Maundy Thursday and Palm Sunday yet still neglect Ruby Tuesday but if you do not wish to receive further *GlassCuts* then drop a firmly assertive hint to bqf@britishglassfoundation.org.uk

BGF welcomes onward transmission to anyone you feel may appreciate that the worst thing about censorship is [REDACTED] [REDACTED]. Similarly if you have anything you consider may be worth our colleagues out there in the *Wonderful World of Carpe Diem*^{®GF} then send it to BGF at the usual address.

In conclusion I caution you to avoid taking the mickey out of men who wear wigs. My uncle did it once just before getting sent down for three years by the bloke. And finally, as an angler, I hope one day to live in a nation where a man will not be judged by the pursuit of his activity, but by the content of his landing net. I have a bream. Nice one.



www.britishglassfoundation.org.uk

Registered Charity No 1139252 / Registered Company No 7344291