

WHITE HOT

news from WHCmog

Meeting of minds

Take a look at the list of our supports, below, and you will notice the name of Enovert. Now refer back to the Landscaping update on the leading page of GC142 and you will see why we are delighted to welcome Enovert aboard. Thus it was a real pleasure to play host to their AGM recently and we thank them for extending us the courtesy of holding it at [WHCmog](#).

BGF Secretary Lynn tells *GlassCuts*: *'It was very successful and everyone who attended was very impressed and very much looking forward to seeing the museum open next summer. Amongst the attendees - estimated at more than 50 - were Cllr David Stanley (current Mayor of Dudley); Cllr Anne Millward (current Mayor's Consort); Cllr Hilary Bills (current Deputy Mayor) plus other Councillors including Cllr Ian Kettle; Cllr Gaye Partridge. I think I also spotted former MP Lynda Waltho talking to Allister Malcolm. They all heard from me about the plans and July (hopefully!) 2020 opening and I thanked Enovert and Dudley Council for their support. Allister also thanked the Enovert Trustees for their patience and support due to the delays with the landscaping, which they funded. Cllr David Stanley expressed his offer of assistance.*

Many thanks to everyone who helped make it such a success, including Allister who set up the room, helped with car parking and did a wonderful glass blowing demo and the two volunteers Eileen Sanders and Janet Britton who looked after everyone serving the tea and coffee.

It was cream teas and cakes after the AGM plus strawberries and cream. The Enovert Trustees said it was the best cream tea they have ever had and were most appreciative that we invited them to hold their AGM there in such a magnificent building. Successful event!'



IFoG and WHCmog – further update

Herewith the latest list of proposed events at White House Cone from 23rd to 26th August, courtesy of Allister Malcolm ...

On the ground floor

The British Glass Foundation has received numerous donations, which have been generously donated with the permission to sell in order to raise vital funds. These items of Glass and Specialist Books will be on display and available to purchase. Meanwhile the BGF volunteers will be providing refreshments on a daily basis.

Exhibition: 'We Made It (at the WHC)'

Artists based here at the White House Cone Museum of Glass teamed up to put on a display of their latest creations. This includes the following artists ...

Darren Weed - of DWGlass shows his latest graal pieces with intricate illustrations encapsulated within the glass. Darren has now developed a beautiful range of unique pieces with a strong aesthetic running throughout his collection.

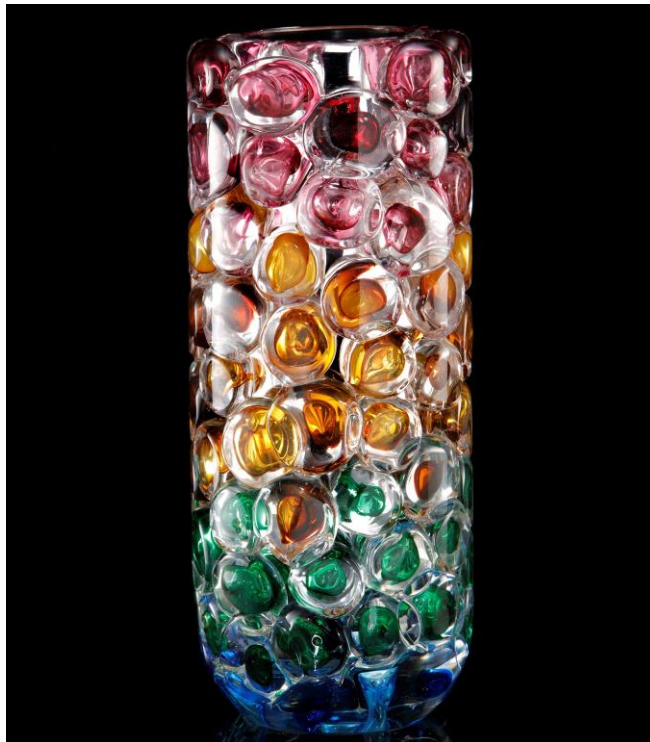


Madeleine Hughes - a recent graduate from the University of Wolverhampton who joined the hot glass studio almost a year ago. Her skills have been progressing at quite a pace and her latest pieces really show off her talent.



Terri Malcolm - produces all of her pieces using reclaimed and recycled material. All the glass elements have been very cleverly recycled from offcuts in the glass studio and these are then combined with mixed media. Each piece is a true one off as a result.

Allister Malcolm - the resident glass artist here at WHC showcases some of his latest sculptural one-offs.



Demonstrations

The hot glass studio will be open and demonstrations will take place from 10:30am - 5:30pm.
23rd – 26th August.

Walk

Graham Fisher will be giving a guided canal walk on the Friday 23 August that will conclude at WHC.

At the end of each day a BGF update on the museum's development will take place in the studio at 6 p.m. with an opportunity for Q&As.

In the Open Studio

Simon Bruntnell has curated *Legacies* a small exhibition (reported in previous GC) that will be predominantly in his studio space along the canal side. The exhibition will have a small display within the downstairs gallery of the WHC as an introductory preview to what is actually on show in Simon's studio. It will be open daily from 10:30am - 4:00pm.

The museum main doors will be open 10:00am - 6:00pm and the Hot Glass studio will open its back doors at 9:00am daily for those who would appreciate the opportunity to preview items coming out of the lehr whilst they are still warm.

An Exhibition curated by

Keith Cummings

'Legacies'



Keith Cummings
Jonathan Harris
Heike Brachlow
Elliot Walker
Vanessa Cutler
James Devereux
Georgia Redpath
Karlin Rushbrooke
Simon Eccles
Max Stewart
Caroline Madden
Sara Squire

Bruntnell Astley presents an exhibition curated by Keith Cummings. Participants include those who have both been taught or worked alongside Keith since 1967 as he developed the glass department at Stourbridge college or since then when the course moved to the University of Wolverhampton in 1989.

August 23rd until 26th
10:30 - 4pm
August 27th until 8th Sep
12noon - 4pm

Location: (at Whitehouse Cone)
Bruntnell Astley Gallery
Suite 4 The Newhouse
Old Stuarts Works
High St, Wordley
DY8 4FB
www.bruntnellastley.com blog
for updates

BRUNTNELL  ASTLEY
www.bruntnell-astley.com

GIFTS AND DONATIONS

to BGF funds, for which we thank you

In addition to cash donations (*see below as to how you can do this*), readers are reminded of the opportunity to secure a lasting *memento* in the new museum by way of purchasing one of Allister Malcolm's engraved glass plaques. Details via the usual BGF address.

BGF routinely reviews its donation procedures. Enhancements are announced as and when but in the meantime we continue to accept donations direct by cash, cheque and BACS. For donations by BACS our bank details are:

HSBC Bank
Branch Identifier Code: MIDLGB2108U
Sort code: 40-38-07
Account number: 72076780

BGF recognizes those who wish to donate via *Virgin Money Giving*. Go via the *Virgin Money Giving* QR code listed below or click here: <http://uk.virginmoneygiving.com/charity-web/charity/finalCharityHomepage.action?charityId=1005650> **Potential donors are advised that contributions via VMG may invoke commission fees that are beyond the control of BGF.**

Donations made by a UK taxpayer can attract Gift Aid, which is a great supplement to our funds and costs the donor nothing. All we need to claim this is your Gift Aid declaration; contact us for details if you have not already supplied us with relevant particulars.

Please note: In acknowledging the support of donors **GlassCuts** generally will not reveal either the details of the donor or the amount donated unless the donor indicates otherwise or the circumstances are in the public domain or public interest. This does not preclude the possibility of details, including the amount donated and/or the donor's particulars, appearing elsewhere in BGF material.

All donations are greatly appreciated. BGF is entirely philanthropic and its Trustees are unremunerated. BGF policy is that all monies received go directly to the cause. Donations can be as one-off contributions or standing order.

RICH MIXTURE

news from elsewhere

Into the future

Sandra Snaddon, Fellow of the Guild of Glass Engravers, *informs us that* The Guild of Glass Engravers Exhibition *21st Century Engraved Glass* will be held 24th August - 4th September 2019 at Holy Trinity Church, Amblecote, Stourbridge DY8 4DL. <https://www.gge.org.uk>

No, me neither

If, like me, you have ever remotely tried with no success to comprehend just how a glassmaker actually does it, then look no further than this link kindly provided by Allister Malcom. Settle back with a cup of something for just 3m 23s and watch in awe as Allister makes it look about as easy as shelling peas. <https://youtu.be/KxhzvgvvsZg>

Glass fair news

Christina Glover of Specialist Glass fairs (www.cambridgeglassfair.com and [Specialist Glass Fairs Ltd](http://SpecialistGlassFairsLtd)) has brought another of her events to our attention. Here it is in her own words ...

Small but perfectly formed, Ickworth Decorative Glass Fair showcases some great collectable, contemporary and antique glass. Brought to you by the organisers of the Knebworth and National Glass Fairs, this event is must whether you are seeking to add to your collection or just love beautiful things. Entry to the house, gardens and fair is free for National Trust members or admission is £9 to the gardens, which gives free entry to the fair.

The date for your diary is Sunday, 15th September, 2019. Ickworth House is in Ickworth Park, Horringer on the A143, nr. Bury St. Edmunds Suffolk, IP29 5SA.

Museums for the big boys and girls

As mentioned in GC145, it's not just the kids who can have fun at museums and the latest list of attractions for adults, *Let's Do This*, is also now available. Activities are based principally Red House Glass Cone and Dudley Archives & Local History Centre; details at www.dudley.gov.uk/see-and-do/museums and via Twitter and Facebook feeds. For large print leaflets ring 01384 815571.

CRYSTAL CALENDAR

what's going on and where. Tell us yours

White House Cone museum of glass

As above and on website

Red House Glass Cone

Various dates July to December 2019

JAM (Juniors at Museum) and *Let's Do This (adults programme)*

A wide range of activities for kids and adults based principally at Red House Glass Cone and Dudley Archives & Local History Centre. Details at www.dudley.gov.uk/see-and-do/museums and via Twitter and Facebook feeds. For large print leaflets ring 01384 815571.

Ruskin Glass Centre

See <http://ruskinglasscentre.co.uk/events/>

The British Glass Biennale opens 23rd August and closes 28th September 2019

Submit applications via: <https://biennale.submittable.com/submit>

More information at: <http://www.biennale.org.uk>

Elsewhere around Glassville^{®GF}

15th September, 2019

Ickworth Decorative Glass Fair

Ickworth House, Ickworth Park, Suffolk, IP29 5SA.

www.cambridgeglassfair.com and [Specialist Glass Fairs Ltd](http://SpecialistGlassFairsLtd)

PARISH NOTICES

thank you for contacting us

Alan J. Poole monthly newsletter, latest edn. alanjpoole@aol.com

More soon. In the meantime, Keep it Glass.

Graham Fisher MBE
Press & Publicity,
pp British Glass Foundation
www.britishglassfoundation.org.uk

Getting involved

Would you like to be part of a vibrant and enthusiastic group of volunteers dedicated to supporting the British Glass Foundation and its work at White House Cone museum of glass?

Specialist skills or knowledge are welcome but not essential. We are committed to equal opportunities and full training will be given where necessary. To find out more, contact us via the usual address and we will be delighted to do the rest.

Promotional opportunities

Black Country Radio broadcasts throughout the Black Country on 102.5 FM and also via DAB and on-line around the world. If your event satisfies the criteria of not-for-profit, charitable or philanthropic and is community orientated there is no charge.

Go to www.blackcountryradio.co.uk hover over 'Live' and submit the form you'll find under *Events*. Your announcement will then appear on the *Events Guide*. Allow sufficient notice and the event may be 'voiced' and broadcast live on air during daytime broadcasting. Depending on the number of events, yours might be broadcast several times; there's no guarantee but it should appear at least once. Meanwhile it stays on the *Events Guide* listings on the world-wide web until the day itself.



These are the QR codes for the British Glass Foundation (left) and Virgin Money Giving (right).

Scan to browse the work of the BGF or to make a donation. If you are donating by VMG then please note that VMG's own commission fees, over which BGF has no control, may apply.



THE BRITISH GLASS FOUNDATION GRATEFULLY ACKNOWLEDGES THE SUPPORT GIVEN BY THE EUROPEAN REGIONAL DEVELOPMENT FUND AND THE HERITAGE LOTTERY FUND



EUROPEAN UNION
Investing in Your Future
European Regional
Development Fund 2007-13



... also JLA Consulting, Dudley MBC, Fieldings Auctioneers (Stourbridge) Enover Community Trust, Istock Enover Trust.



Details of other BGF partners, supporters and sponsors at: www.britishglassfoundation.org.uk/the-foundation/

Follow us on Facebook and Twitter



<https://m.facebook.com/The-White-House-Cone-Museum-of-Glass-1783619608579416/>



<https://twitter.com/whitehousecone>

Please note: These are 'live' links - click to try - but depending on your operating system you may need to insert manually into your browser.

- fin -

Disclaimer

Wow, this hot weather; do you remember those more innocent days when all you needed for total protection was a tin of Nivea cream? And completing a scorching Wimbledon for another year reminds me of when my mate was accidentally killed by a tennis ball. At least he had a lovely service. Which did in turn cause me to think it was high time we dedicated a *Disclaimer* to the subject of sport and exercise. You know the sort of thing, like convincing yourself that obesity runs in the family until you realise that nobody has ever run in your family. Anyway ...

GlassCuts is the muscle-bound bulletin of the British Body Mass Index Foundation (*I'm well below 30 so there, how about you? - Ed*). It is bench-pressed together and held in place with non-steroids supplements by a team with torn muscles and stress fractures here in the shimmering but sweaty opulence that is *GlassCuts Gym* and has no other function than to win medals, set new records and perhaps even say a bit about glass.

Whilst every effort is made to ensure accuracy, no responsibility etc etc ... (usual chest expanders apply).

This email is sent to you solely on the basis that you are a super-svelte gym-bunny with rippling biceps developed by years of lifting and putting down email bulletins like this but if you do not wish to receive further *GlassCuts* then send an email marked: 'I'm so idle I didn't know the missus had left me until I ran out of clean cups' to bqf@britishglassfoundation.org.uk

BGF welcomes onward transmission to anyone you feel may appreciate our quest for physical perfection in an imperfect world. Similarly if you have anything you consider may be worthy of our colleagues out there in the *Wonderful World of Dumbbells*^{®GF} then send it to BGF at the usual address.

Must dash; I have to console my best mate who was so disappointed with Wolverhampton Wanderers' performance last year that he nailed his season ticket to his gate and somebody pinched the nail. But finally, a warning to the person who stole my glasses. I will find you. I have contacts. Oh dear.



British Glass Foundation

www.britishglassfoundation.org.uk

Registered Charity No 1139252 / Registered Company No 7344291