

GlassCuts

The Journal of the British Glass Foundation;
the Voice of Stourbridge Glass Museum

STOURBRIDGE
GLASS MUSEUM

Celebrating BGF History 2009 – 2022

Click: www.britishglassfoundation.org.uk/the-foundation/ or <https://grahamfisher.co.uk/resources>

Edition: 206

Dated: 2.8.22

Days since SGM opening on 9th April ...

1

1

5

IFoG and SGM

INTERNATIONAL
FESTIVAL
OF
GLASS
26-29 AUGUST 2022



For the first (but certainly not the last) time, Stourbridge Glass Museum is now able to play a full and active role as a participant in the forthcoming International Festival of Glass to be held over the August Bank Holiday weekend. It's going to be a busy weekend for us; details are here:

<https://www.stourbridgeglassmuseum.org.uk/event/international-festival-of-glass-weekend/>

WHAT'S ON AT SGM

Full details of our packed programme of events are contained in our brochure (available free of charge from the Museum and other local outlets) or via the Stourbridge Glass Museum website by clicking here: <https://www.stourbridgeglassmuseum.org.uk/events/>

Sweet dreams are made of this



It seems like only yesterday but it is in fact four years since newcomer Madeline ('Maddie') Hughes obtained her BA Hons in Applied Arts at Wolverhampton (in only two years, as it happens) before taking up a spot at Allister's Hot Shop here at the museum. Her talent from the outset was obvious and we all knew she would go far. Even so, her latest achievement has elevated our opinion of her to new heights. We'll let a very excited Maddie tell you all about it herself:

'I have recently been a contestant (following in the footsteps of some of our other colleagues - Ed) in the latest series of Blown Away on Netflix. Filmed in Canada in October 2021 I competed against some of the best glass artists in the world to win the title 'Best In Glass'. It was the most nerve-racking but wonderful experience and I will forever cherish the memories. Since it has been aired I have launched my own body of work entitled 'Nostalgia' which includes my 'Sweet Memories' glass bags of sweets and improved gumball machines as seen on episode 1'.

Wonderful, absolutely wonderful. She's young and has lots to offer for a long time to come, so keep those eyes peeled as the star of Maddie Hughes sparkles in its ascendancy.



AA2A

The acronym stands for *Artists Access to Art Colleges*, a scheme backed by Sunderland University who are offering placements to artists and designers in 2022-2023 with the opportunity to undertake a period of research or realise a project using their workshop and supporting facilities. AA2A schemes aim to benefit students and institutions through their interaction with practising Creatives. Applications are welcome from across a wide spectrum including those with disabilities, culturally diverse backgrounds and non-graduates. https://aa2a.biz/colleges_menu/college-pages/sunderland

Application packs are via rachael.hall@sunderland.ac.uk with a deadline of 21st September 2022.



Tales from the riverbank

Back in 2017, when I was reviewing my book *Jewels On The Cut* for a 2nd edition, I mentioned the work of the Riverside House Social Regeneration Project. Spearheaded by Lloyd Stacey MSc this was noted as an ambitious – nay, visionary – undertaking to restore a derelict former ironmaster's house alongside the Stourbridge Canal as a community project for the benefit of all but particularly the educationally and socially disadvantaged.

Fast forward just five years (doubtless accompanied by a lot of hard graft in the meantime) and I am delighted to have received an email from Lloyd informing me that not only is the project well advanced, it is this year also part of the International Festival of Glass celebrations. The attractions throughout the festival are eclectic and include craft shops, workshops, exhibitions, refreshments and even a four piece jazz band. Lloyd deserves our heartiest congratulations on the wonderful work he and his team are doing down at Riverside; being part of IFoG must be the icing on the cake. More, including a full itinerary for IFoG, can be found at the truly inspirational riverside-house.org.uk



West Midlands Tourism Awards 2023

Following the successes of previous events, applications are invited for the 2022-23 cycle. The aim is to collectively shine a spotlight on the region's tourism champions.

The awards will celebrate the success of tourism businesses across the region and promote the strength of the business and leisure tourism offer; its venues, people, experiences and accommodation. Entry is free and the closing date is 11th September 2022. All entries must be submitted via the [online portal](#)

To find out more, including how the awards process works and the eligibility criteria for each of the 15 categories, visit: <https://www.makeitwm.com/wmta>

Competition time

With acknowledgements to Allister Malcolm and The Worshipful Company of Glass Sellers of London there's a big notice gone up outside the museum but just in case you miss it, here's what it says: 'Create a design ALL ABOUT YOU & we will make the winning design in glass. Send your entry by 21st September 2022 to clerk@glass-sellers.co.uk with your name and age for a chance to see your idea come to life'

Well, what are you waiting for?



BGF Governance news

Back in GC201 (dated 4.5.22) and following the opening of SGM to the public, we invited applications to our Founding Patrons scheme in which philanthropists and *aficionados* can support the museum in its ongoing development by way of annual subscription in return for associated benefits. The scheme has attracted considerable interest and we are now pleased to welcome our inaugural **Founding Patrons**:

David Williams-Thomas (BGF Patron)
Graham Knowles (BGF Chairman)
Gavin Whitehouse (BGF Accountant)
Viv Astling (BGF Ambassador)
John Hughes (BGF Ambassador)
Giles Woodward (Glass enthusiast)
Clive Manison (Glass enthusiast)

There are also additions to our ranks of **Trustees** ...

Glassmaker **Elliot Walker** was appointed a Trustee on 27 June 2022.



Codsall-raised Elliot graduated from Bangor University in Wales with a degree in psychology before studying at Wolverhampton where he obtained a Masters in Applied Arts. He worked for Peter Layton as part of his London Glass-blowing studio team for eight years before 'going solo'. The recipient of numerous prestigious awards since, including the British Glass Biennale Craft & Design award in May 2015, Elliot was the winner of the second season of the Netflix series *Blown Away* that streamed in 2021. (see Facebook, Instagram *et al* and <https://whatson.cmog.org/guest-artist/winner-blown-away-season-2-guest-artist-elliott-walker>)

Subject to confirmation **Larry Priest** has kindly agreed to become a Trustee. Larry is a founding Director of BPN architects who worked alongside Complex Development Projects Ltd from the inception of the idea for a Glass Museum at Wordsley.

He brings experience of a range of projects across all sectors with a particular interest in Listed Buildings and historic structures which involves repair, restoration and contemporary new additions. The more recent work of his office has focussed on mixed use regeneration projects with collaboration as a central and important theme. The work of the practice has been acknowledged with a number of design and construction awards. www.bpnarchitects.co.uk



Unsolicited applications from prospective Funding Patrons are welcome. Trustees are usually appointed by invitation but interested parties who feel they have the requisite skillsets may submit their details for consideration. In both instances please use bgf@britishglassfoundation.org.uk

GIFTS AND DONATIONS

to BGF funds, for which we thank you

Funding and maintaining a revenue stream is an ongoing requirement. We greatly value your contributions. BGF Trustees are unremunerated; all monies received go to the cause. Donations can be as one-off contributions or standing order.

Our thanks to Mr J.J of Dunfermline for his donation by PayPal. This is the first occasion we have received monies via PayPal, so it evidently works fine.

BGF routinely reviews its donation procedures. Enhancements are announced as and when but in the meantime we continue to accept donations direct by cash, cheque and BACS. **We would respectfully ask that all cheques and orders be made payable to BRITISH GLASS FOUNDATION.**



This is the QR code for the British Glass Foundation.
Scan to browse the work of the BGF or to make a donation.

For donations by BACS our bank details are:

HSBC Bank
Branch Identifier Code: MIDLGB2108U
Sort code: 40-38-07
Account number: 72076780

To donate via *JustGiving* visit:

<https://donate.justgiving.com/donation-amount?uri=aHR0cHM6Ly9kb25hdGUtYXBP1c3RnaXZpbmcuY29tL2FwaS9kb25hdGlvbnMvN2FIMjYTM1NDIhNDUxMik1NzdIODgzOIRiZihkMDQ=>

To donate *PayPal* visit: <https://www.paypal.com/uk/for-you/transfer-money/send-money> and donate to bqf@britishglassfoundation.org.uk

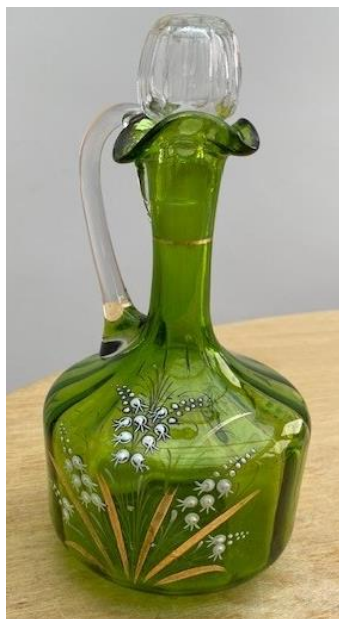
To donate through our website visit: www.stourbridgeglassmuseum.org.uk and hit the 'Donate' button.

Donations made by a UK taxpayer can attract Gift Aid, which is a great supplement to our funds and costs the donor nothing. All we need to claim this is your Gift Aid declaration; contact us for details if you have not already supplied us with relevant particulars.

Please note: In acknowledging the support of donors *GlassCuts* generally will not reveal either the details of the donor or the amount donated unless the donor indicates otherwise or the circumstances are in the public domain or public interest. This does not preclude the possibility of details, including the amount donated and/or the donor's particulars, appearing elsewhere in BGF material.

Notes and queries

Whilst we are happy to facilitate this *ad hoc* information exchange on unusual items of interest BGF cannot undertake valuations or offer comment other than that supplied by our correspondents. Submission does not guarantee publication. No responsibility ... etc (*usual caveats apply*)



* Jane Quinn, a recent visitor to SGM, enquires: *'This belonged to my Mother who lived in Burton-on-Trent and bought it locally. The figure 19 in white is on the base. I've inherited it from her and would like to know more about it please.'*

Prior to publication our curator Harrison has already informed us: *'It looks like a Mary Gregory, lily of the valley pattern. I've found a few similar shapes. Just trying to pin down if it's a particular pattern or a forgery- as there were quite a few European copycats!'*

Can any of our readers supply more? Usual address, thanks.

PARISH NOTICES

tell us the news from your world

Send us your latest and we'll try to mention it. No guarantees other than we'll do our best.

* Latest news from the *Contemporary Glass Society* including on-going information regarding their 25th anniversary celebrations throughout 2022. www.cgs.org.uk

* *Alan J. Poole newsletter* latest edition. alanjpoole@aol.com

* *The Worshipful Company of Glass Sellers of London*. Regular updates, forthcoming Zoom presentations and more. info@glass-sellers.co.uk

* *The Glass Society Events Schedule*. <http://glassassociation.org.uk>

From the Hot Studio:

www.allisternalcolm.com **Facebook** @allisternalcolmglass **Twitter** @allisternalcolm **Instagram** @allisternalcolmglassltd

Gearing up for IFoG

Just a reminder in these interesting times

If you've got something 'glassy' to say and you want it said to somebody else, consider sending it to us and we'll do our best to help pass the information via *GlassCuts*. Usual address.

And finally ...

Handy household tips (no. 94 in a series): *'When entertaining visitors, always keep an empty milk bottle in the fridge in case someone wants black coffee.'*

Nurse, he's got out of bed again.

Graham Fisher MBE FRGS
Trustee, PR & Comms
pp British Glass Foundation
www.britishglassfoundation.org.uk

Getting involved

Would you like to be part of a vibrant and enthusiastic group of volunteers dedicated to supporting the British Glass Foundation and its work at the new glass museum?

Specialist skills or knowledge are welcome but not essential. We are committed to equal opportunities and full training will be given where necessary. To find out more, contact us via the usual address and we will be delighted to do the rest.

Promotional opportunities

Black Country Radio broadcasts throughout the Black Country on 102.5 FM and also via DAB and on-line around the world. If your event satisfies the criteria of not-for-profit, charitable or philanthropic and is community orientated there is no charge.

Go to www.blackcountryradio.co.uk hover over 'Local' and click 'Local Events Guide'. Submit the form you'll find at upper left under '+ Add Event'. Your announcement will then appear on the *Events Guide*. Allow sufficient notice and the event may be 'voiced' and broadcast live on air during daytime broadcasting. Depending on the number of events, yours might be broadcast several times; there's no guarantee but it should appear at least once. Meanwhile it stays on the *Events Guide* listings on the world-wide web until the day itself.

Keeping in touch

BGF Secretary Lynn Boleyn MBE
Direct Line: 01384 900447
Email: bgf@britishglassfoundation.org.uk
Snailmail: Stourbridge Glass Museum, Stuart Works, High Street, Wordsley, West Midlands, DY8 4FB

THE BRITISH GLASS FOUNDATION GRATEFULLY ACKNOWLEDGES THE SUPPORT GIVEN BY THE EUROPEAN REGIONAL DEVELOPMENT FUND AND THE HERITAGE LOTTERY FUND

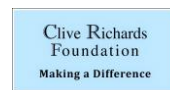


EUROPEAN UNION
Investing in Your Future
European Regional
Development Fund 2007-13



Made possible with
**Heritage
Fund**

... also Dudley MBC, Fieldings Auctioneers, Enover Community Trust, Ibstock Enover Trust, Clive & Sylvia Richards Charity



BGF would also like to acknowledge the following, *inter alia*, for their support and generosity ...

Black Country Local Enterprise Partnership Growing Places Fund : Garfield Weston : Edward Cadbury Charitable Trust : The Headley Trust : The Charles Hayward Foundation : W.A. Cadbury Charitable Trust : John Ellerman Foundation : The Worshipful Company of Glass Sellers of London : The Pilgrim Trust

... together with many other contributions from other trusts, foundations and individuals. (E&OE)

Full details of BGF partners, supporters and sponsors at: www.britishglassfoundation.org.uk/the-foundation/

Follow us ...



<https://m.facebook.com/GlassMuseumUK/>



<https://twitter.com/glassmuseumuk>

Instagram

<https://www.instagram.com/glassmuseumuk/>

- fin -

Disclaimer

We comply with the provisions of Data Protection and so we must remind you that *GlassCuts* exists solely for the information of its supporters, our Privacy Statement is outlined in detail on our website at www.britishglassfoundation.org.uk and subscribers can withdraw at any time just by sending an email to the bgf address below with 'stop' in the subject header.

No responsibility etc. etc ... (usual caveats apply)

We welcome you passing *GlassCuts* on to anyone you feel may be interested in our work. You know the rest but if in any doubt then please communicate with us directly in the first instance via bgf@britishglassfoundation.org.uk



British Glass Foundation

www.britishglassfoundation.org.uk

Registered Charity No 1139252 / Registered Company No 7344291