

# GlassCuts

The Journal of the British Glass Foundation;  
the Voice of Stourbridge Glass Museum

STOURBRIDGE  
GLASS MUSEUM

Celebrating BGF History 2009 – 2022

Click: [www.britishglassfoundation.org.uk/the-foundation/](http://www.britishglassfoundation.org.uk/the-foundation/) or <https://grahamfisher.co.uk/resources>

Edition: 231

Dated: 10.10.23

## A SPECIAL 'SUSTAINABILITY' EDITION

### The green, green glass of home

For some while now we have been following progress in the Hot Shop where our resident glassblower has been investigating ways of taking his business into a new era of sustainability by way of reducing both costs and carbon footprint. With the full support of BGF Allister has invested a great deal of time and an equal amount of finance in choosing to go electric in his furnace, glory hole and cooling Lehr, all accompanied by solar panels on the roof that will benefit not only the glassmaking side of the museum's operations but the museum itself. Having now operated under these new conditions for sufficiently long to obtain viable data he has since been calculating, mensurating extrapolating, interpolating and crunching every bit of information and then subjected it all to independent rigour before declaring his findings. And the results across the board are impressive.



The pages of our modest email bulletin cannot do full justice to Allister's quite meticulous investigations and so, a picture painting a thousand words as it does, we refer you to the attached video link that explains all.

These are early days and there's a lot more to evaluate but Allister is keen to make public his findings in the expectation it may offer guidance to others who may now be looking to embark on a similar journey in order to keep their businesses viable.

As Alliser himself says in the video: 'Twelve months ago there was nobody around to really offer me any advice to this level and I felt very lonely. Hopefully there are a few of you out there who will benefit from me sharing this wealth of information and I really wish you all the best with your practise'.

**NOTE TO MEDIA:** The information referred to places the Hot Shop at Stourbridge Glass Museum at the leading edge of glassmaking technology. And it is happening right now in the very heart of the historic Stourbridge Glass Quarter, with all the ramifications and *kudos* that engenders for the wider community. BGF thus urges all media representatives to seize this opportunity in being amongst the first to offer this news their most fulsome coverage.

The complete video comes in at 16m 45s and can be viewed [here](#).

## Crystal balls

With acknowledgements to Gavin Whitehouse and the financial team, The British Glass Foundation is proud to announce it has secured a sponsorship package with Dudley Town Football Club (DTFC) in the same style as our existing arrangement with Penn Colts that will include the Stourbridge Glass Museum logo on the clothing worn by the players on each matchday, a prominent banner at the ground and diverse social media coverage. Graham Knowles, Chairman of BGF, said: *'We are delighted to have secured this deal which is indicative of our wish to reciprocate the support that has been given to us throughout the local community'*.



## Blast from the past

SGM Curator Harrison has sent us this charming tale of a recent visit and an acquisition:



'This week we had a group visit with our patron, Giles Woodward, who recently donated an original Arrowsmith artwork of the Holloway End Cone glassworks which belonged to his late father, Herbert William Woodward (known as Bill). After it was cleaned in-house, Giles then generously paid for it to be framed in UV protective and nonreflective art glass from our local gallery framers.

The ink and sgraffito piece is by Arthur Arrowsmith, a Wolverhampton artist who captured the post-war Black Country in his distinctive and beautiful black and white artworks. I have seen images and prints of this in books, papers and online but seeing the ink marks and sgraffito, I was very excited to know we had the original donated to us for display. Strangely, this was a week or so after I had been researching the whereabouts of this artwork as part of wanting to have it printed in replica form for display. It felt pretty fated!

The Holloway End Glassworks, Amblecote, was founded between 1623 and 1639, when it is mentioned in a deed. Amblecote Church is visible in outline in the background. It is also said the cone was visible from the stands of the football club. The cone, long derelict, was demolished on 6<sup>th</sup> March 1955, and appears in the local papers with this print as the illustration to show what the cone once looked like.

Giles donated this earlier in the year, but this week came to visit with representatives from Bristol Museum - Amber Turner, Applied Arts Curator, Caroline Booth-Morris, Development Manager, and Chair of Bristol Museum Friends, Sue Thurlow. They had come to view our displays and learn from our curation as to how they can reimagine the glass collection at Bristol Museum.

It was a fantastic day, with some lovely cake, and they have been nothing but blown away by the museum displays, the glass artists, the events, and the vision going forward. We have made some great friends and hopefully we can support each other going forward to tell the story of British and local glass'.

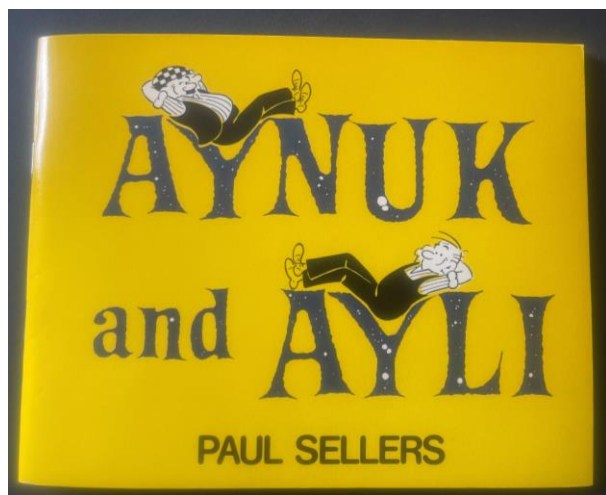
## Wheels within wheels

This is such an extraordinary tale of happenstance that we just had to relate it 'as is'.

My good lady was attending a cartography conference recently (*she came back with yet another award; we're gonna need a bigger house - Ed*) when a man named Mark Hammond, evidently knowing of her association with Yours Truly, introduced himself as part of a group who undertook my guided walk through the glass industry via the Stourbridge canal towpath at a pre-covid Biennale.

He subsequently contacted me direct and, out of the blue, gave me some fascinating information: 'I'm looking forward to visiting the new Glass Museum. I did visit before it got its more recent status. Along with many in Stourbridge, my paternal side have been involved in glass industry for generations, at Whitefriars in London, Chance Glassworkers and more recently in Stourbridge. My Dad was Chief designer at Thomas Webb (Obituary in The Times if interested), and his brother still cuts glass at his house.'

It was this latter bit regarding Mark's glass connections that roused my curiosity so I forward it to 'our man who knows', retired proprietor of Stourbridge Glass Engravers, Ian Dury. His comprehensive response came back within minutes: 'Yes, I knew his family well. I got my blanks from his father David, he was a friend of Malcolm Sergent (Royal Scot Crystal) who stocked blanks at a barn in Churchill. David distributed the glass. Mark's sister was also involved in the design work and did my thumbnail sketches for my catalogue. Mark's uncle Stephen owned Windsor Crystal and operated on the Delph trading estate next to my unit. I have recorded Stephen for the Voices from the Cones project, a fantastic family history in the Stourbridge glass industry. Steve has recently donated an original Stuart's marking machine to RHGC which I am currently renovating'.



Relating Ian's information to Mark, he then came back with an invitation for Ian to contact him and exchange notes, but not before revealing this charming anecdote: 'Another interesting fact is that Dad was the figurative inspiration for the character Ayli in the Aynuk and Ayli comic strips that appeared in the *Express & Star* newspaper. The artist was Paul Sellers, and he was with Dad at Stourbridge Art College. They remained friends for life, and Paul was Dad's Best Man when he got married. Ayli was a tall thin lanky person based on Dad's physique. Paul later went on to do many other things such as Dingbats'.

And there you have it; a whole panoply of social history all arising from one chance conversation at a completely unrelated meeting involving my other 'arf. Now be honest, it sure beats sitting at home watching the telly.

**Editor's note** - Gentlemen, if the aforementioned meeting should take place, I would be very interested on behalf of our readers to hear the outcome. It will all add to our burgeoning knowledge of our history and provenance. Thank you.

## Tempus fugit

It don't seem like two minutes since the last one, but the next one is already looming large. Organisers of the International Festival of Glass 2024 are calling for artists wishing to be considered for the Glass Biennale and the Glass Bead Biennale to make their presence felt. Application forms for both are attached, together with best wishes from BGF to all who take part. Go on, go for it.

## WHAT'S ON AT SGM

Full details of our packed programme of events are contained in our brochure (available free of charge from the Museum and other local outlets) or via the Stourbridge Glass Museum website by clicking here: <https://www.stourbridgeglassmuseum.org.uk/events/>



## GIFTS AND DONATIONS

to BGF funds, for which we thank you

Funding and maintaining a revenue stream is an ongoing requirement. We greatly value your contributions. BGF Trustees are unremunerated; all monies received go to the cause. Donations can be as one-off contributions or standing order.

BGF routinely reviews its donation procedures. Enhancements are announced as and when but we currently accept donations direct by cash, cheque and BACS. **We would respectfully ask that all cheques and orders be made payable to BRITISH GLASS FOUNDATION.**



This is the QR code for the British Glass Foundation.  
Scan to browse the work of the BGF or to make a donation.

For donations by BACS our bank details are:

**HSBC Bank**  
**Branch Identifier Code: MIDLGB2108U**  
**Sort code: 40-38-07**  
**Account number: 72076780**

To donate via *JustGiving* visit:

<https://donate.justgiving.com/donation-amount?uri=aHR0cHM6Ly9kb25hdGUtYXBpLmp1c3RnaXZpbmcuY29tL2FwaS9kb25hdGlvbnMvN2FIMjYTM1NDIhNDUxMik1NzdlODgzOTRIzjhkMDQ=>

To donate *PayPal* visit: <https://www.paypal.com/uk/for-you/transfer-money/send-money> and donate to [bfg@britishglassfoundation.org.uk](mailto:bfg@britishglassfoundation.org.uk)

To donate through our website visit: [www.stourbridgeglassmuseum.org.uk](http://www.stourbridgeglassmuseum.org.uk) and hit the 'Donate' button.

Donations made by a UK taxpayer can attract Gift Aid, which is a great supplement to our funds and costs the donor nothing. All we need to claim this is your Gift Aid declaration; contact us for details if you have not already supplied us with relevant particulars.

*Please note:* In acknowledging the support of donors *GlassCuts* generally will not reveal either the details of the donor or the amount donated unless the donor indicates otherwise or the circumstances are in the public domain or public interest. This does not preclude the possibility of details, including the amount donated and/or the donor's particulars, appearing elsewhere in BGF material.

**In addition to cash** BGF is similarly grateful for donations of good quality glass to sell in our shop. All funds raised from the sale of donated glass go into a separate Collections Account towards future acquisitions for the museum. To make a donation directly into the **British Glass Foundation Collections Account** use sort code: **40-38-07** and account number: **52291789**.

## Notes and queries

Whilst we are happy to facilitate this *ad hoc* information exchange on unusual items of interest BGF cannot undertake valuations or offer comment other than that supplied by our correspondents. Submission does not guarantee publication. No responsibility ... etc (*usual caveats apply*)

\* A swift response to Tom Southall's request in last issue regarding the plate engraved with skaters came from Alan Poole (*he of the AJ Poole Monthly Newsletter- Ed*) who offered: *'I can fill in a gap or two in respect of Jill Swain, a self-taught Intaglio Glass Engraver and a Member of the Guild Of Glass Engravers, from West Sussex. From what information I am aware of, she seems to have exhibited in Guild Branch exhibitions between 1998 to 2004, but I've heard nothing since'*. Perhaps there's more to come, maybe even from Jill herself? We'll keep you posted.

\* Maria Thropp is a big fan of old glass and has contacted us regarding her latest acquisition: *'I was lucky enough to pick up two of these glasses in a charity shop at the weekend and I am hopeful they may be early 17th century? I would be grateful for anything that you could tell me and whether they are really of that age? They are about 20 cms high'*. Hmmm ... dunno. How about you?



\* And reader Linda Wenlock has a problem she'd appreciate some help with: 'I am looking for two glasses to complete a set that I own and wondered if you could identify the pattern and maker? They are on a green stem with a silver ball above and an iridescent bowl'.



## PARISH NOTICES

tell us the news from your world

*Send us yours and we'll try to mention it. No guarantees other than we'll do our best.*

\* Alan J. Poole newsletter latest edition. [alanjpoole@aol.com](mailto:alanjpoole@aol.com)

\* The Worshipful Company of Glass Sellers of London. Updates. [info@glass-sellers.co.uk](mailto:info@glass-sellers.co.uk)

\* The Glass Society Events Schedule. <http://glassassociation.org.uk>

## From the Hot Studio:

[www.allistermalcolm.com](http://www.allistermalcolm.com) **Facebook** @allistermalcolmglass **Twitter** @allistermalcolm **Instagram** @allistermalcolmglassltd  
Follow all that's going on via Allister's feeds.

As described in GCs *passim* and above there are exciting goings-on down at the studio. Al and the team are capturing it all and uploading it regularly to his feeds where you can keep up with the latest.

### Just a reminder ...

If you've got something 'glassy' to say and you want it said to somebody else, consider sending it to us and we'll do our best to help pass the information via *GlassCuts*. Usual address.

## **And finally ... latest news from our environment correspondent**

*'The level of pollution in the world today is becoming intolerable. Only this morning I opened a tin of sardines to find it was full of oil and all the fish were dead'.*

And if you think that's daft just bear in mind the biggest irony in history is that your own computer now asks you to prove you are not a robot. Spooky or what? They'll be putting stuff in your tea next.

**Graham Fisher MBE FRGS**  
Trustee, PR & Comms  
pp British Glass Foundation  
[www.britishglassfoundation.org.uk](http://www.britishglassfoundation.org.uk)

### **Volunteering at Stourbridge Glass Museum**

Would you like to be part of a vibrant and enthusiastic group of volunteers dedicated to supporting the British Glass Foundation and its work at the new glass museum?

Specialist skills or knowledge are welcome but not essential. We are committed to equal opportunities and full training will be given where necessary. To find out more, contact us via the usual address and we will be delighted to do the rest.

### **Promotional opportunities**

Award-winning *Black Country Radio* and *BCR Xtra* broadcast throughout the Black Country on 102.5 FM and also via DAB and on-line around the world. Part of BCR's remit is to promote local events. If you are organising an event that satisfies the criteria of not-for-profit, charitable or philanthropic and is community orientated then you may be eligible for no-fee promotion.

Go to [www.blackcountryradio.co.uk](http://www.blackcountryradio.co.uk) hover over 'Local' and click 'Local Events Guide'. Submit the form you'll find at upper left under '+ Add Event'. Your announcement will then appear on the *Events Guide*. Allow sufficient notice and the event may be 'voiced' and broadcast live on air during daytime broadcasting. Depending on the number of events, yours might be broadcast several times; there's no guarantee but it should appear at least once. Meanwhile it stays on the *Events Guide* listings on the world-wide web until the day itself. And it's all entirely free of charge.

### **Second time around**

*GlassCuts* is compiled and edited *pro bono* and distributed to its subscribers free of charge. To receive *GlassCuts* contact our Secretary (below). However, if you miss us first time around, or if you are searching for that elusive feature, then all issues of *GlassCuts* right back to number 1 are archived [here](#).

### **Keeping in touch**

**BGF Secretary & Business Manager Lynn Boleyn MBE**  
01384 900447 : [bjf@britishglassfoundation.org.uk](mailto:bjf@britishglassfoundation.org.uk) : Stourbridge Glass Museum, Stuart Works, High Street, Wordsley, West Midlands, DY8 4FB

## **THE BRITISH GLASS FOUNDATION GRATEFULLY ACKNOWLEDGES THE SUPPORT GIVEN BY THE EUROPEAN REGIONAL DEVELOPMENT FUND AND THE HERITAGE LOTTERY FUND**



**EUROPEAN UNION**  
Investing in Your Future  
European Regional  
Development Fund 2007-13



Made possible with

**Heritage  
Fund**

... also Dudley MBC, Fieldings Auctioneers, Enover Community Trust, Istock Enover Trust, Clive Richards Foundation



BGF would also like to acknowledge the following, *inter alia*, for their support and generosity ...

Black Country Local Enterprise Partnership Growing Places Fund : Garfield Weston : Edward Cadbury Charitable Trust : The Headley Trust : The Charles Hayward Foundation : W.A. Cadbury Charitable Trust : John Ellerman Foundation : The Worshipful Company of Glass Sellers of London : The Pilgrim Trust : FCC Communities Foundation ... plus many contributions from other trusts, foundations and individuals. (E&OE)

Full details of BGF partners, supporters and sponsors at: [www.britishglassfoundation.org.uk/the-foundation/](http://www.britishglassfoundation.org.uk/the-foundation/)

### **Follow us ...**



<https://m.facebook.com/GlassMuseumUK/>



<https://twitter.com/glassmuseumuk>

**Instagram**

<https://www.instagram.com/glassmuseumuk/>

### **Disclaimer ...**

We comply with the provisions of Data Protection and so we must remind you that *GlassCuts* exists solely for the information of its supporters and is distributed only to those who consent (as defined by GDPR) to being on our database in order to receive it or other relevant information.

Our full Privacy Statement is at [www.britishglassfoundation.org.uk](http://www.britishglassfoundation.org.uk) or can be supplied by us on request. Subscribers can withdraw at any time simply by sending an email to the bgf address below with 'stop' in the subject header. No responsibility etc. etc ... (usual caveats apply)

We welcome you passing *GlassCuts* on to anyone you feel may be interested in our work. You know the rest but if in any doubt then please communicate with us directly in the first instance via [bgf@britishglassfoundation.org.uk](mailto:bgf@britishglassfoundation.org.uk)



**British Glass Foundation**

[www.britishglassfoundation.org.uk](http://www.britishglassfoundation.org.uk)

Registered Charity No 1139252 / Registered Company No 7344291