



GlassCuts

The informal email bulletin of the British Glass Foundation

Issue No: 62

Dated: 20.1.15

For latest updates also visit our news section at www.britishglassfoundation.org.uk
Archives of *GlassCuts* and the BGF *Newsletter* are held at
www.britishglassfoundation.org.uk

Donate via individual contributions direct to BGF, by standing order, by using the
QR code at footer or clicking

[http://uk.virginmoneygiving.com/charity-
web/charity/finalCharityHomepage.action?charityId=1005650](http://uk.virginmoneygiving.com/charity-web/charity/finalCharityHomepage.action?charityId=1005650)

A Happy New Year and other better-late-than-never festive felicitations to all of our readers

The last turkey leftovers are all long gone, the diets already failing and the New Year's resolutions are looking a bit frayed around the edges. But that's enough about our house. I think one of the most curious Christmas gifts I received was a large bag of rice. Thanks, Uncle Ben. Anyway, although the jollies may now be a memory we hope you had a great time nonetheless. Welcome back; let's get straight into it.

IN THIS ISSUE

First out of the blocks ...

Glass Centre goodies

From our '*It's never that time of year again already, is it?*' Department

GC gets to CMOG

Yet more fascinating follow-ups

More Dawn revelations

Last call, please!

Money matters

And finally ...

History on the net

Dates for your diary

First out of the blocks ...

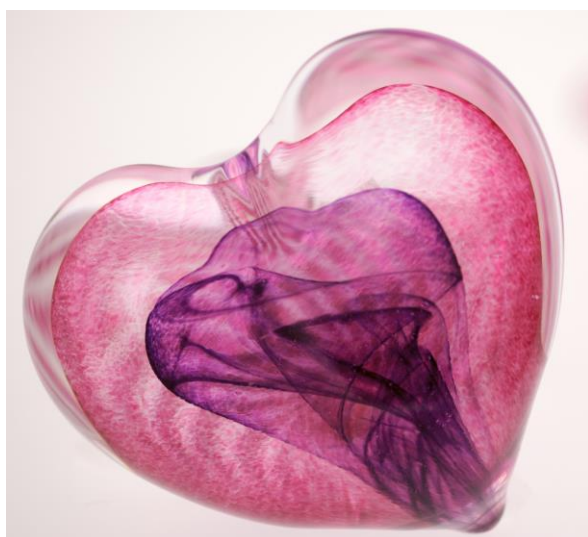
... is our long-standing pal Sandra Snaddon FGE, Exhibition Organiser for the Guild of Glass Engravers. Arriving at *GlassCuts Towers* just a few minutes too late to make the final edition of 2014, Sandra's notification instead has pride of place in this first edition of 2015:

Hi Graham. Just to let you know that the Guild of Glass Engravers will be holding their exhibition of Contemporary Engraved Glass at The Red House Glass Cone between 18th May and 26th June 2015.

There will be demonstrations of glass engraving and 'have a go' sessions. www.snaddon.com/glass



We are much obliged to Sandra for giving us plenty of notice, because it also means that her exhibition will be listed in *Dates for your diary* from now up until the event. And it's all entirely free of charge, which can't be bad. Sooooo.... this is the ideal opportunity for us to remind you to get those details coming in as soon as possible. Because if you don't tell us, then our tens of millions of readers (*officially audited figures; would we fib to you? - Ed*) aren't going to know either. Ta ever so.



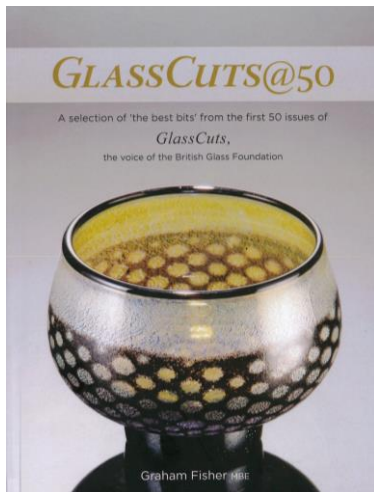
Glass Centre goodies

Someone else hot off the page for 2015 is Sara Jo Harrison who has already fired the media release our way for what's going on at Sunderland's National Glass Centre throughout February. And a packed programme it looks, too, with just about everything 'glassy' from classes and hands-on sessions to meetings, family activities, even a Valentine's Day 'special'. All you love-birds can look that one up for yourself, but it looks great fun. For details of this and everything else at NGC follow the links at www.nationalglasscentre.com

From our 'It's never that time of year again already, is it?' Department

Yes it is, and there are changes afoot. Good to hear once more from Christina Glover of Specialist Glass Fairs who has kindly dropped a line to *GlassCuts Towers* informing us of an exciting announcement about the relaunch of the Cambridge Glass Fair. This will take place on Sunday 22nd February 2015 at its prestigious new home of Knebworth House, Stevenage SG1 2AX. The venue benefits from an easily accessible location, being just 29 miles from London and situated directly off the A1(M) at J7. It is well signed. There is on-site licensed catering and plenty of free parking.

For further info visit www.cambridgeglassfair.com or telephone Paul on 07887 762872. Open 10:30am - 4:00pm, admission £5 with free entry to accompanied children under 16.



GC gets to CMOG

My other 'arf, who is a publisher, knows more about these things than me but in order for a book to be 'proper' I'm told it has to have an ISBN number and then, by law, have copies deposited in various places including repositories in Oxford, Cambridge, Dublin, Edinburgh, London and Aberystwyth. The rest is then down to you as to where, quite apart from selling the things, you can wheedle your way into for posterity.

So we are truly delighted to get our own New Year off to a flying start with some great news for your fave-rave glass fanzine.

We have received a letter from no less than the Corning Museum of Glass in the good ol' US of A confirming that *GlassCuts@50*, the compendium of tasty bits from our first 50 issues (featured in *GC54*) is now lodged in perpetuity in their library. Quite apart from the sheer prestige - for which, many thanks - it also means that the generations of tomorrow will be reading about, and learning from, what you good folk out there in *Glassville*^{®GF} are doing today. Which can't be bad. We are all quite rightly very proud of our glass industry and its exponents so it is reassuring to believe that others far removed from Stourbridge will, in many years to come, still be able to appreciate why.

Yet more fascinating follow-ups

The Ravensitch and Stourvale narrative that we have been following for these past several issues continues to exercise our readers and we are grateful once more to Mike Perkins of Amblecote History Society for his further verifications, which apparently involve a lot of over-laying one map on top of another. Together with a good deal of thought and patience, I would imagine. We have now accrued quite a collection of material on this site; contact *GlassCuts* Towers at the usual address if you have missed it or would like to know more.

More Dawn revelations

Back in *GC57* I related the tale of how I was making enquiries into a glass oil lamp that my dear ol' mom bought for me as a gift from Dawn Crystal of Wordsley over a quarter of a century ago. It's a hugely personal piece, having accompanied me around the country by inland waterways for the bulk of that time; hence I was looking to find out more about it.



I know it was cut by John's father and business partner Reg because he remembers doing it, but I wasn't sure of the maker. Thanks to John, not only have I now found out it is by Pete Walters of the former Cameo Crystal, but blow me down with a feather if John hasn't dug out a video on *YouTube* that his father took of Pete Walters actually making the things.

And there's more; John has also unearthed examples of his father at work cutting glass of all shapes and sizes. This is just dazzling stuff, and we felt we had to tell you about it not only so you can witness a master at work for yourselves but also to help preserve and promote it through the hallowed pages of your fave-rave glass fanzine and, ultimately, the BGF website www.britishglassfoundation.org.uk

Get the coffee on, make yourself comfie, click on these and be as proud as we are to know that such gifted people still walk amongst us.

Blowing glass lamps:

<https://www.youtube.com/watch?v=gBoyXjSx0Lc>

Others:

<https://www.youtube.com/watch?v=fJtNB-S8Iv4>

<https://www.youtube.com/watch?v=WeyOmkhpmGE>

https://www.youtube.com/watch?v=X5suP_Frwwc

https://www.youtube.com/watch?v=JqC5PRo5_6I

<https://www.youtube.com/watch?v=9T4Ubu3qf-M>

<https://www.youtube.com/watch?v=CjZITa67Zn0>

<https://www.youtube.com/watch?v=DIgN6mvWhyA>



Last call, please!

We have received news from Elisabeth Johnson, International Festival of Glass Project Director that the new curator has been appointed for the British Glass Biennale 2015. The lucky chap is London-based artist and curator Matt Durran, to whom we offer our heartiest congratulations. The Biennale *az eny eejut knose*, is part of the International Festival of Glass and takes place from 28th May - 28th June in the Glasshouse Arts Centre and Ruskin Glass Centre, Wollaston Road, Amblecote, DY8 4HE. www.biennale.org.uk and www.ifg.org.uk

Now, for this next bit we are going to print it in colour, in highlighted capital letters and then make the email sticky-backed so you can sellotape it to the cat's forehead as a reminder ...

THE DEADLINE FOR APPLICATIONS TO ENTER WORK IN THE BIENNALE IS 31st JANUARY 2015 SO IF YOU WANT IN, GET CRACKING RIGHT NOW.

Information and application form at www.biennale.org.uk.

Money matters

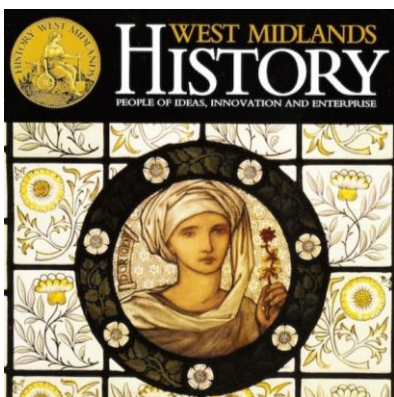
Money is not the most important thing in the world. Love is. Fortunately, I love money.
Jackie Mason.

So do we. Help us nurture our loving side. Usual address.

Please note: In recognizing donors and acknowledging their support, *GlassCuts* generally will not reveal either the details of the donor or the amount donated unless the donor indicates otherwise or the circumstances are in the public domain or public interest. This does not preclude the possibility of details, including the amount donated and/or the donor's particulars, appearing elsewhere in BGF material.

And finally ...

History on the net



History West Midlands (HWM) is an independent website which provides free access to a variety of programmes and different media focusing on the history of the people of the West Midlands, their ideas, innovation and industry. The initiative is designed for anyone who wants to know more about the region and also provides resources for students and educators. HWM is imminently about to launch a series of podcasts investigating various aspects of the Black Country and industries, which will include of course, reference to its glassmaking. I must declare an interest here, since to my unfettered delight I am the presenter, but don't let that put you off. Registration for the podcasts is free at <http://historywm.com/hwm-podcasts/>

Dates for your diary

Events & Exhibitions at Broadfield House Glass Museum

www.dudley.gov.uk/see-and-do/museums/glass-museum/

See *Friends*, below

Events and Exhibitions at Red House Glass Cone

www.dudley.gov.uk/see-and-do/museums/red-house-glass-cone/

18th May - 26th June 2015

Guild of Glass Engravers *Exhibition of Contemporary Engraved Glass* including demonstrations and 'have a go' sessions (*see feature above*)

www.snaddon.com/glass

Elsewhere around the highways and byways of Glassville^{®GF}

9th - 13th February 2015, commencing 11:00am daily

Halesowen Over-50s Club, Halesowen College, Whittingham Road B63 3NA

Dr Kate Round: *Women in the Glass Industry*, an illustrated presentation (*featured GC60*)

Visitors welcome; contact Vanessa Buffery 0121 602 7769 or vbuffery@halesowen.ac.uk

22nd February 2015, 10:30am - 4:00pm

Knebworth House, Stevenage SG1 2AX

Cambridge Glass Fair (*see feature above*)

www.cambridgeglassfair.com or Paul on 07887 762872

21st March 2015

Station Glass, Dadlington Lane, Shenton Leicestershire CV13 6DJ

Hot Stuff including making pieces for the 'Celebrity Doodle' Campaign (featured GC61)

www.stationglass.com

25th - 31st May 2015

Various sites but focusing on Ruskin Glass Centre, Amblecote DY8 4HF

International Festival of Glass and British Glass Biennale (featured GC54)

www.ifg.org.uk

14th March - 5th May 2015

Pyramid Gallery, 43 Stonegate, York YO1 8AW

Contemporary Glass Society. RIPPLES - Glass Inspired by Nature (featured GC59)

www.cgs.org.uk

25th - 31st May 2015

Wordsley Methodist Church, Stream Road, Kingswinford DY6 9NP

Bruntnell Astley exhibition of contemporary glass.

https://docs.google.com/file/d/0B7TeOZSCgiNoRElJcHNCYm81bDZDUTZsbTBXUEp2OW84bzU0/edit?usp=drive_web

From Friends of BHGM

Events are usually held at Broadfield House Glass Museum unless otherwise stated. Costs vary as indicated. Further details from *Friends* direct. www.friendsofbroadfieldhouse.co.uk

24th January 2015, 1:30pm

An afternoon at the 'flicks'. A selection of movies; ice cream interval, tea and biscuits. £5.00

26th February 2015, 7:30pm

Vintage Fountain Pens and Writing Equipment with Mark Hill. Bring a suitable item for free valuation. Cost £10.00

Bulletin Board

Since *GlassCuts* was last on air we have also been notified of ...

Erm ... not a lot yet. Book your space now.

More soon. In the meantime, Keep it Glass.

Graham Fisher

Press & Publicity,

pp British Glass Foundation

www.britishglassfoundation.org.uk

The White House survey (featured GC58)

Please now spare few moments to click on <https://www.surveymonkey.com/s/96BDTV7> and complete the survey form. Thanks.



These are the QR codes for the British Glass Foundation (left) and Virgin Money Giving (right).

Scanning with a suitably enabled mobile or hand-held device will escort you directly to the websites, where you can either browse the work of the BGF or make a donation.



Devices of recent manufacture will most likely already have the necessary software built in. Older devices may require a download, usually free. If difficulties are encountered, contact your provider and not, please, BGF.

Disclaimers 'n stuff

I keep it quiet for security reasons but I actually own the original Portland Vase. I know it's genuine because the bloke at the car boot sale promised me it was and if he's lying I'll demand my fiver back. So, I started the New Year by sorting through my old Greco-Roman artifacts in the loft, as you do, and thought '*Gosh, these people were the basis for civilization as we know it. And they knew a bit about glass too. I'd better show them some Respeck*'. Even now, they pervade our modern culture, and if you are a fan of the 60s series *The Man from U.N.C.L.E.* then you'll remember Ilyad Kuryakin. (*Clever reference to Homer there, keep it going - Ed*) And what about that discount store with zero interest, the Argos-noughts? Even Greek yoghurt has a culture. Yes, I know how corny that one is but I don't want to break the mould (*Yeah! culture, mould, geddit? This is brilliant stuff!*) and so it is with this in mind that our inaugural 2015 *Disclaimer* pays homage to those toga-and-sandals-musclebound weirdy-beardies - but enough about my girlfriends - of classical yesteryear.

GlassCuts is the hemlock-draft of the British Glass Foundation. It is compiled by a team of *Et Tu Brute* plotters and has no other function than to recount the slaughter of pious religious converts for public entertainment, expand its empire across most of Europe (weather conditions and Angela Merkel permitting) and maybe even say a bit about glass. Whilst every effort is made to ensure that the legend of Romulus and Remus is represented as solid historical fact (*add in the Tooth Fairy here - Ed*) no responsibility etc etc ... (*usual caveats apply*)

This email is sent to you via a team of charioteers on the basis that you appear on our list of those who have spotted our brassica vegetable patch where we feed slaves to fight lions. Or as we say, 'Our collies, see 'em? (*Now that one is clever if you read it quick - Ed*). However, if you do not wish to receive further *GlassCuts* then either assault us with flaming tar-covered spears or send us an email via a trebuchet (*You're just getting smarteypants now - Ed*) to bfg@britishglassfoundation.org.uk. A brief indication as to why we must Troy harder would be appreciated.

BGF welcomes onward transmission of its papyrus missive to anyone either side of Hadrian's Wall, depending on which one you've Pict, whom you feel may be vaguely interested. If you know someone who may appreciate it as they endeavor to conquer the Northern hordes before freezing to death in Iceland - formerly known as Bejam - then please feel free to forward it. Similarly, if you have anything you consider may be of interest to our fellow marauders elsewhere then send it to BGF at the usual address.

We finish with an indication of how the mighty ancients improved our understanding of all this, not least in the heady field of mathematics. What, for example, is a forum? It is, of course, a two-um plus a two-um. Or a one-um plus a three-um. Or ... hang on, I'll get my coat.

