

# GlassCuts

The journal of the British Glass Foundation  
[www.britishglassfoundation.org.uk](http://www.britishglassfoundation.org.uk)

Edition: 90  
Dated: 10.5.16



## WHITE HOT

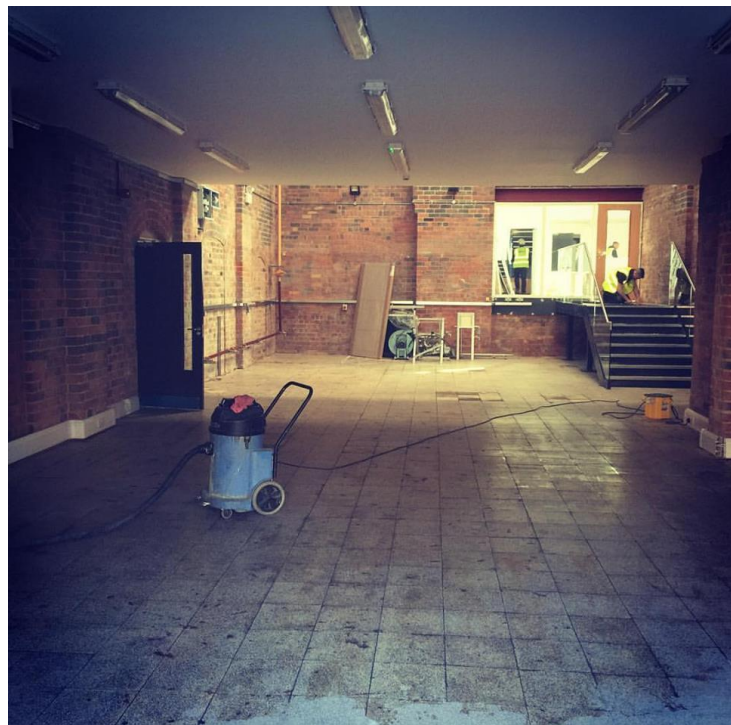
### How it looks right now

The latest imagery through the lens of BGF Secretary Lynn Boleyn MBE



### Hot studio update

Allister Malcolm is busy preparing for the move to his new studio and is already looking to connect his website direct with Instagram to feed on to his *Facebook* and *Twitter* pages. Latest news at:



[https://www.facebook.com/permalink.php?story\\_fbid=1317026338312266&id=224069450941299&substory\\_index=0](https://www.facebook.com/permalink.php?story_fbid=1317026338312266&id=224069450941299&substory_index=0)

## **White House Cone - museum of glass now in cyberspace**

The same Allister Malcolm has also successfully applied to Google to place [White House Cone - museum of glass](#) squarely on the map, quite literally. There's also an entry for *Allister Malcolm Glass*. So now the new museum and one of its key features are instantly locatable and there for the world to see from any internet-enabled terminal on the planet. It's just the way these things work but serendipitously this has unleashed a blizzard of related sites that are already a valuable information resource extending over several pages of allied links. These will continue to expand as our public profile increases, thus turning your hand-held or mobile device into an encyclopedia of our work at the press of a touch-screen or click of a button. To the youngsters of today it is all just so routine; for those of slightly more mature years this sort of readily accessible information repository is little short of astonishing and would barely have been imaginable just a generation ago. Just tap us into your browser and watch it happen. With thanks to Allister for setting it all up.

## **RICH MIXTURE**

### **Your Big Chance**

Take a look at the image of the glass bowl made by Allister Malcolm. Courtesy of the man himself I am very fortunate to own an earlier version and can tell you, as I look at it right now in pride of place in my modest domicile, it is a quite extraordinary piece of work. And each one is unique.



If you would like one of these masterpieces to grace your home then here is your Big Chance, because Allister has graciously donated one for auction. The Big Day, or more accurately the Big Evening, is Monday 23<sup>rd</sup> May 2016 and the venue is the Athena Theatre, Wulfruna Street, Wolverhampton WV1 1SF. Viewing is from 18:30, with further information and catalogue preview obtainable at [www.MADEWolverhampton.co.uk](http://www.MADEWolverhampton.co.uk)

The event itself is an auction of ceramics and glass organized by the University of Wolverhampton and MADE Wolverhampton (MADE being Midlands Architecture and the Designed Environment). In addition to Allister's work it will feature ceramics and glass by a variety of luminaries in their field including Keith Cummings, Ashraf Hanna, Ikuko Iwamoto and Angela Jarman. And this is the wonderful part – *all proceeds raised* will go towards taking the BA & MA Applied Arts students to NEW Designers at the Business Design Centre, Islington, London.

*Talking of which ...*

## New Designers 2016

The exhibition for emerging design showcases the fresh thinking of over 3,000 innovative design graduates and provides an essential pipeline of new talent into the UK's creative industries. Part 1 (29<sup>th</sup> June - 2<sup>nd</sup> July 2016) covers glass, textiles, jewellery and ceramics; Part 2 (6<sup>th</sup> - 9<sup>th</sup> July 2016) takes in furniture and product design, illustration and motion arts. The venue is the Business Design Centre, Islington, London N1.

Quote code NDGLASSNEWS to purchase day tickets in advance for £10.50\* instead of £16 on the door. Book online at [www.newdesigners.com](http://www.newdesigners.com) (\*£1.50 booking fee applies per advance ticket purchase, offer expires 19<sup>th</sup> June 2016)

### A new dawn

We would like to mention father and son team Reg and John at Dawn Crystal just down the road from [White House Cone - museum of glass](#) who, with no intentions aforethought other than demonstrating a pride in their work, routinely send us images of their latest engraving output. And it is stunning; just take a peek at [www.dawncrystal.co.uk](http://www.dawncrystal.co.uk) to see for yourself.



This is no advert, just recognition of two lovely people who are helping to keep the flame of Stourbridge Glass alight and who grace us by keeping in touch with *GlassCuts*. There are, of course, other skilled craftspeople working both within sight of the new museum and beyond and we are always pleased to hear how they are getting on in these challenging times.

### ***Spott the deliberut mistayk corner***

Ok, hands up; there was nothing deliberate when we dated the last issue of *GC* as 10<sup>th</sup> May 2016. Congratulations to absolutely no-one who spotted it. Keep 'em peeled!

## GIFTS AND DONATIONS

BGF is reviewing its donation procedures. Upgraded facilities will be announced in due course but in the meantime we continue to accept donations direct by cash, cheque and BACS. For donations by BACS our bank details are:

**HSBC Bank**  
**Branch Identifier Code: MIDLGB2108U**  
**Sort code: 40-38-07**  
**Account number: 72076780**

BGF recognizes those who wish to donate via *Virgin Money Giving*. Go via the *Virgin Money Giving* QR code listed below or click here: <http://uk.virginmoneygiving.com/charity-web/charity/finalCharityHomepage.action?charityId=1005650> **Potential donors are advised that contributions via VMG may invoke commission fees that are beyond the control of BGF.**

Donations made by a UK taxpayer can attract Gift Aid, which is a great supplement to our funds and costs the donor nothing. All we need to claim this is your Gift Aid declaration; contact us for details if you have not already supplied us with relevant particulars.

*Please note:* In acknowledging the support of donors **GlassCuts** generally will not reveal either the details of the donor or the amount donated unless the donor indicates otherwise or the circumstances are in the public domain or public interest. This does not preclude the possibility of details, including the amount donated and/or the donor's particulars, appearing elsewhere in BGF material.

All donations are greatly appreciated. BGF is entirely philanthropic and its Trustees are unremunerated. BGF policy is that all monies received go directly to the cause. Donations can be as one-off contributions or standing order.

## CRYSTAL CALENDAR

Throughout the creation phase of the new museum we have been happy to support our colleagues out there in the *Wonderful World of Glass*<sup>®GF</sup> by promoting what is going through this column. Now that we are at the stage where we can also promote our own events we are delighted to henceforth include details of what is on offer at ***White House Cone - museum of glass***.

We have been plugging *The Heat is On* for some time now, together with our requests for 'pop-up' exhibitions (see *GCs passim* and our website) but we are now getting in our stride with much more to come. So watch this space and follow us through the reportage above.

As always, we continue to promote events beyond our own confines so if you have anything you wish to promote then send it to us at the usual address. We may include a small stand-alone feature in the main body of *GC* but your entry here in the **CRYSTAL CALENDAR** will continue right up to the day of your event. It's free of charge and with no obligation; all we ask is that your submission is glass-orientated, brief, factual, non-advertorial and submitted at the earliest opportunity. We aim to cover as many as possible must reserve our right to ... etc etc.

### ***White House Cone - museum of glass***

See *GCs passim* and our website for details of *The Heat is On* and our pop-up series. Or contact us in the usual way for more. Submissions for 'pop-ups' still welcome.

### ***Red House Glass Cone***

As always, Red House Cone has a jam-packed programme of exhibitions and events running throughout the season. The list is extensive so for details click here for a pdf download: <http://www.dudley.gov.uk/EasysiteWeb/getresource.axd?AssetID=280652&type=full&servicetype=Attachment> or visit <http://www.dudley.gov.uk/see-and-do/museums/red-house-glass-cone/>

### ***Ruskin Glass Centre***

See <http://ruskinglasscentre.co.uk/events/>

### ***Elsewhere around Glassville***<sup>®GF</sup>

4<sup>th</sup> - 28<sup>th</sup> May 2016

*Connections*. Contemporary Glass Society partnered with The Scottish Gallery (*featured GC76*)  
16 Dundas St, Edinburgh EH3 6HZ.

[www.cgs.org.uk](http://www.cgs.org.uk)

29<sup>th</sup> June - 2<sup>nd</sup> July 2016 (Part 1) and 6<sup>th</sup> - 9<sup>th</sup> July 2016 (Part 2)  
*New Designers 2016 (see feature above)*  
Business Design Centre, Islington, London N1  
[www.newdesigners.com](http://www.newdesigners.com)

13<sup>th</sup> November 2016  
*The National Glass Fair (featured GC83)*  
National Motorcycle Museum, Solihull, West Midlands B92 0EJ. 10:30am - 4:00pm. Admission £5.  
[www.nationalglassfair.com](http://www.nationalglassfair.com) [info@specialistglassfairs.com](mailto:info@specialistglassfairs.com) or 07887 762872

12<sup>th</sup> September 2016 - 15<sup>th</sup> January 2017  
*Exhibition: The life and work of stained-glass artist Margaret Agnes Rope (featured GC85)*  
Shrewsbury Museum, The Square, Shrewsbury SY1 1LH.  
[www.shrewsburymuseum.org.uk/events/?c24event=EVENT532611](http://www.shrewsburymuseum.org.uk/events/?c24event=EVENT532611)

16<sup>th</sup> September - 8<sup>th</sup> October 2016  
*Black to white and back again*  
Contemporary Glass Society exhibition hosted by London Glassblowing (*featured GC81*)  
[www.cgs.org.uk](http://www.cgs.org.uk)

2<sup>nd</sup> October 2016  
*The Glass Fair @ Knebworth (featured GC83)*  
Knebworth House, Stevenage, Herts SG1 2AX. 10:30am - 4:00pm. Admission £5.  
[www.nationalglassfair.com](http://www.nationalglassfair.com) [info@specialistglassfairs.com](mailto:info@specialistglassfairs.com) or 07887 762872

## PARISH NOTICES

*Neon Workshops News.* Local and international events and workshops from the world of neon.  
[www.neonworkshops.com](http://www.neonworkshops.com)

*Craftspace & Design Newsletter* May edn. National Craft & Design Month and Selected Makers Awards.

Free at: <http://www.craftanddesign.net/newsletter/craft-and-design-newsletter-may16.pdf?t=1>

More soon. In the meantime, Keep it Glass.

Graham Fisher  
Press & Publicity,  
pp British Glass Foundation  
[www.britishglassfoundation.org.uk](http://www.britishglassfoundation.org.uk)

### The White House Survey

The success of this project depends greatly on public support. BGF is very grateful for yours. Please spare a few moments to visit <https://www.surveymonkey.com/s/96BDTV7> and complete the survey form. It will take very little of your time but will be of immense value to us. Thank you.



These are the QR codes for the British Glass Foundation (left) and Virgin Money Giving (right).

Scan to browse the work of the BGF or to make a donation. If you are donating by VMG then please note that VMG's own commission fees, over which BGF has no control, may apply.



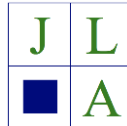
THE BRITISH GLASS FOUNDATION GRATEFULLY ACKNOWLEDGES THE SUPPORT GIVEN BY THE EUROPEAN REGIONAL DEVELOPMENT FUND AND THE HERITAGE LOTTERY FUND



EUROPEAN UNION  
Investing in Your Future  
European Regional  
Development Fund 2007-13



Also Jane Alexander and colleagues at JLA Consulting for advice on the securing and management of funding  
[www.jlaconsulting.org.uk](http://www.jlaconsulting.org.uk)



Details of other BGF partners and sponsors at: [www.britishglassfoundation.org.uk/the-foundation/](http://www.britishglassfoundation.org.uk/the-foundation/)

- fin -

#### Disclaimer

As Rudyard Kipling famously didn't remark: 'If you can keep your head when all about you are losing theirs, then you probably haven't got a clue as to the reality of the situation'. So, there I was in an Indian restaurant with the missus a few days ago when the waiter came over and said: 'Curry OK, Sir?' To which I replied: 'OK, but just the one song then you can shove off.' Oops. That's when the fight started. Well, I'd had a few beers and it's an easy enough mistake to make. And the Magistrates were very lenient. So I reckon it is high time we dedicate a *Disclaimer* to those who get their knickers in a twist or cannot stop inadvertently finding life is all mixed up. I've got a mate who is a past master at it and every time he opens his mouth it seems it's just so he can fit an extra foot inside. A religious man, he told me that as a kid he used to pray for a new pushbike until he realized God didn't work like that, so he went out and nicked one then prayed for forgiveness. Don't try that at home, kids. Anyway ...

*GlassCuts* is the accidental *faux pas* of the British Glass Foundation. It is strung together in a mixture of the eternal hope of expectation twinned with the mordant distress of reality by a team of the high-school rejects of destiny and erstwhile fans of *The Fonz* in the shimmering opulence of the cognitive behavioural therapy unit that is the Editorial Suite of *GlassCuts Towers*. (Our proudest moment was when dabbling in astrology helped cure our Editor's dyslexia - for years he had thought he was a librarian. *Boom boom*). It has no other function than to differentiate between Stephen Hawking and Jimmy Clitheroe, expound the virtues of not being a social misfit by dint of idiocy and perhaps even say a bit about glass.

Whilst every effort is made to ensure accuracy, no responsibility etc etc ... (*usual scabby cats apply*).

This email is sent to you solely on the basis that you are not prone to clumsiness and really would like to know more, but If you do not wish to receive further *GlassCuts* then either return your Broadmoor Certificate of Sanity ('Mad' Frankie Fraser - no relation - had three of those so don't feel left out) or send an email marked: 'I'd rather have a full bottle in front of me than a full frontal lobotomy to [bgf@britishglassfoundation.org.uk](mailto:bgf@britishglassfoundation.org.uk). A brief indication as to why we are no longer your chosen oddballs would be appreciated.

BGF welcomes onward transmission to anyone whom you feel may be vaguely interested in our well-intentioned if somewhat off-message *mélange* of glassy miscellany. Similarly, if you have anything you consider may be of interest to our equally confused colleagues out there in normal-land then send it to BGF at the usual address.

Final word on people who struggle to get a grip must go to my mate who told me about a recent trip to the cash machine. Apparently this sweet little old lady said she had a problem and would he check her balance for her? So he gave her a shove and over she went; no problem. Oh dear, I fear there are those who will never get it right. Including me, as I sit here gorging myself on food, swigging from a beer bottle and making this dress. Yes it's true; all I want to do is eat, drink and be Mary. Ta-ra for now.