

GlassCuts

The journal of the British Glass Foundation
www.britishglassfoundation.org.uk

Edition: 99
Dated: 11.10.16



WHITE HOT

How it looks right now

The latest imagery through the lens of BGF Secretary Lynn Boleyn MBE



A reminder ...

... The Glass Association will be holding their 2016 AGM at [White House Cone - museum of glass](#).

The date is Saturday 15th October but Eric Knowles and Andy McConnell will be speaking at a fundraiser on the previous evening (14th), when they will share memories and banter over 'Six of the Best' which, as the name suggests, represents six of their favourite pieces of glass.

The Glass Cone Vase, a specially commissioned piece by Richard Golding, will be auctioned by Eric & Andy on the Friday evening. Andy is then staying over to speak again on Saturday.

Also included on the programme for the Saturday afternoon are BGF Chairman Graham Knowles, Resident Glassmaker Allister Malcolm and your Editor who between them will be presenting a comprehensive overview of the new museum.

This all promises to be a major event of considerable significance in the ever-evolving story of Stourbridge Glass, and this is your opportunity to be part of it.

Booking is essential and full details can be found either on the Glass Association website www.glassassociation.org.uk or via 0121 354 4100.



GA Charity event in aid of the White House Cone Museum of Glass & the Glass Association

'Six of the Best...' [our favourite pieces of glass]

An evening of bonhomie & banter with
Eric Knowles & Andy McConnell
from the *Antiques Roadshow* at the

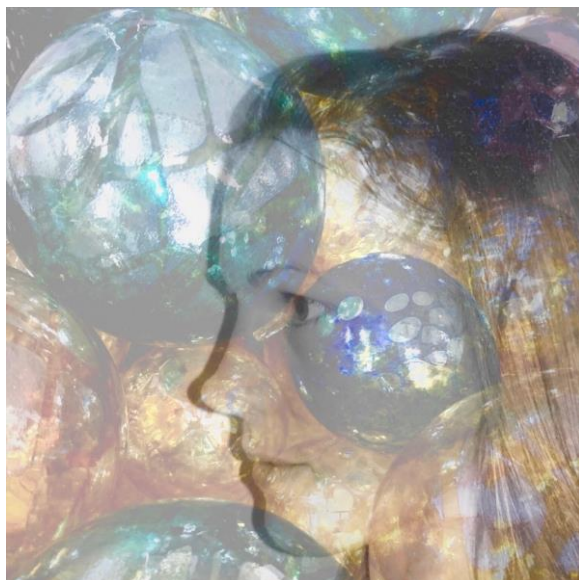
White House Cone Museum of Glass
Stuart Works, Stourbridge, DY8 4FB

Friday 14th October at 7.30pm

Tickets £15 including nibbles & first glass of wine.
from The White House Cone Museum of Glass
& Glass Association website: www.glassassociation.org.uk

RICH MIXTURE

Festive baubles galore



Christmas can't come quick enough for some, especially Allister Malcolm who is already well into plans for his popular *Bauble Decorating Workshop*. This delightful tactile experience enables anyone of any age to create their own unique bauble design; simply select a hand-made bauble of your choice and place your design of stickers over it. The design will then be sandblasted on and the stickers removed to reveal a permanently etched gift or *memento*.

Baubles cost from as little as £6 - £15 for the 'standard' model but for an additional contribution you can create your own special 'limited edition' version using genuine sterling silver leaf.

You can also sponsor Allister and his team throughout the event by clicking here: <http://uk.virginmoneygiving.com/fundraiser-web/fundraiser/showFundraiserPage.action?userUrl=AllisterMalcolm&fald=756604&isTeam=false>

BGF is keen to promote this workshop, not least because Allister is, of course, a fellow Trustee but also that he is graciously giving proceeds from baubles and sponsorship to BGF funds. It all takes place 10:00am - 4:00pm, 26th - 27th November 2016 at [White House Cone - museum of glass](#) and is part of a larger craft fair that spreads across both Red House Cone and [WHCmog](#) over the same weekend, of which more in due course.

And more festive fayre



The Guild of Glass Engravers have kindly notified us well in advance of their impending exhibition of engraved glass at the Red House Cone in the run-up to Christmas and the period beyond.

It will run 23rd October 2016 - 13th January 2017 and will feature work by members of the Stourbridge & Midlands Branch and the South West Branch. There will be plenty of work on display from other talented engravers, together with a range of smaller items such as Christmas decorations.

The exhibition will also include a retrospective display of stipple engraving by the late Doug Burgess. Most of the work will be for sale. www.gge.org.uk



Opportunities in the Lakes

Cumbria Crystal www.cumbriacrystal.com is by any yardstick one of the most prestigious names in the game and is described by Managing director Chris Blade thus: *'Using only traditional glassmaking processes, the small team of 22 highly skilled artisans are committed to making superb crystal of the highest quality, using techniques and processes that have hardly changed since the Roman era. Set in Ulverston, (birthplace of Stan Laurel - Ed) a small town in the beautiful English Lake District, visitors are welcome to watch the choreographed alchemy of glass blowing, browse the Factory Shop and on occasion even try making some glass themselves'*.

Now, if you number amongst those increasingly rare individuals who are blessed with skillsets that go with being either an experienced factory glassblower or a glass cutter, and are smitten by that *set in Ulverston, a small town in the beautiful English Lake District* bit, then here is your moment; Cumbria Crystal are looking to create two such posts as part of their team development. Further details and information pack, together with answers to any questions you may have, are available direct from Chris at chris.blade@cumbriacrystal.com

Chance is a fine thing

The British Glass Foundation is pleased to announce its support of the Chance Glass Works Heritage Trust (CGWHT).

Following several months of preparatory work CGWHT was launched earlier this year with the announcement of its groundbreaking initiative to rejuvenate the iconic site of the former glassworks for the benefit of the local community and to provide a beacon of excellence and attraction for those beyond. The ambitious scheme is based on a multi-use complex but with reference to the factory's historic significance and includes proposals for a replica lighthouse.

Informal discussions between representatives of BGF and CGWHT - your Editor declares an interest as a Trustee of both - helped to identify a number of common grounds where it was felt that cooperation and cross-pollination could be mutually beneficial. These include community engagement, enhancement of social infrastructure, preservation and restoration of artifacts, interpretation of historical provenance and, of course, glass.

CGWHT produces an email bulletin *The Flash* that is distributed in exactly the same manner as *GlassCuts*, only (at present) less frequently. Henceforth BGF will be including *The Flash* as an accompaniment to *GlassCuts* on an *ad hoc* basis as *The Flash* is published. The next edition will be *TF4*; the first three issues are available in the relevant section of www.cgwht.org which also offers full details of the new Trust and its Officers.

[Chance background](#)

On 18th May 1824 Robert Lucas Chance purchased the works of the British Crown Glass Company on the borders of Smethwick and a rapidly developing Birmingham. His brother William joined him in 1832 and sealed the future for a company that was to become the largest glassmaker in the land. At its height Chance Brothers Glass employed 3,500 people and produced just about everything from scientific equipment to tableware. But it was the Great Exhibition of 1851, held in a Crystal Palace for which Chance's had supplied the panes, that not only propelled the firm to the forefront of glassmaking but also saw its entry into the manufacture of lighthouses lenses, a field wherein it reigned supreme for over a century and the legacy of which can still be seen in virtually every lighthouse around the globe.

The site, which once extended to some 30 acres, finally closed in 1981 yet its stark remains are still very much extant and no-one can drive along the elevated M5 without noticing the imposing seven-storey building of 1847 directly alongside the canal below. The view from the New Main Line of the Birmingham Canal Navigations is equally impressive. More at www.cgwht.org/history

CRYSTAL CALENDAR

White House Cone - museum of glass

16th October 2016 (all day, and preceding evening)
AGM Glass Association with guest speakers (*featured GC97 and above*)
Booking and more information: www.glassassociation.org.uk

26th - 27th November 2016
Allister Malcolm's Bauble Decorating Workshop, 10:00am - 4:00pm (*see feature above*)
Part of a larger craft fair that spreads across both Red House Cone and *WHCmog* over the same weekend, Proceeds from baubles and sponsorship to BGF funds. Sponsorship, click here:
<http://uk.virginmoneygiving.com/fundraiser-web/fundraiser/showFundraiserPage.action?userUrl=AllisterMalcolm&fald=756604&isTeam=false>

Red House Glass Cone

23rd October 2016 - 13th January 2017
Exhibition of engraved glass
Featuring work by members of the Stourbridge & Midlands Branch and the South West Branch of the Guild of Glass Engravers and other talented engravers plus a retrospective display of stipple engraving by the late Doug Burgess. Most of the work will be for sale. (*see feature above*)
www.gge.org.uk

Ruskin Glass Centre

See <http://ruskinglasscentre.co.uk/events/>

Elsewhere around Glassville^{®GF}

16th September - 8th October 2016

Black to white and back again

Contemporary Glass Society exhibition hosted by London Glassblowing (*featured GC81*)

<http://londonglassblowing.co.uk/exhibition/black-to-white-back-again/>

2nd October 2016

The Glass Fair @ Knebworth (featured GC83)

Knebworth House, Stevenage, Herts SG1 2AX. 10:30am - 4:00pm. Admission £5.

www.nationalglassfair.com info@specialistglassfairs.com or 07887 762872

15th October 2016

Open Day

Station Glass, Dadlington Lane, Shenton CV13 6DJ (RSVP by 1st October)

www.stationglass.com

13th November 2016

The National Glass Fair (featured GC83)

National Motorcycle Museum, Solihull, West Midlands B92 0EJ. 10:30am - 4:00pm.

www.nationalglassfair.com info@specialistglassfairs.com or 07887 762872

PARISH NOTICES

North Lands Creative Glass seek new Board members. Unremunerated but expenses reimbursed. Deadline 18th November 2016, email including cv and letter to karen.phillips@northlandsglass.com

New Zealand Society of Artists in Glass. October newsletter, special edition. www.nzsag.co.nz

Peter Layton London Glassblowing. October newsletter. ali@londonglassblowing.co.uk

More soon. In the meantime, Keep it Glass.

Graham Fisher MBE

Press & Publicity,

pp British Glass Foundation

www.britishglassfoundation.org.uk

The White House Survey

The success of this project depends greatly on public support. BGF is very grateful for yours. Please spare a few moments to visit <https://www.surveymonkey.co.uk/r/whcoffsite> and complete the survey form. It will take very little of your time but will be of immense value to us. Thank you.



These are the QR codes for the British Glass Foundation (left) and Virgin Money Giving (right).

Scan to browse the work of the BGF or to make a donation. If you are donating by VMG then please note that VMG's own commission fees, over which BGF has no control, may apply.



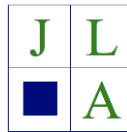
THE BRITISH GLASS FOUNDATION GRATEFULLY ACKNOWLEDGES THE SUPPORT GIVEN BY THE EUROPEAN REGIONAL DEVELOPMENT FUND AND THE HERITAGE LOTTERY FUND



EUROPEAN UNION
Investing in Your Future
European Regional
Development Fund 2007-13



Also Jane Alexander and colleagues at JLA Consulting for advice on the securing and management of funding
www.jlaconsulting.org.uk



Details of other BGF partners and sponsors at: www.britishglassfoundation.org.uk/the-foundation/

- fin -

Disclaimer

Being the environmentally friendly type, I recently had my car converted to run on bio-petrol made from ferret pellets. Unfortunately I then blew the engine up when I accidentally filled it full of weasel. Easy mistake to make, I s'pose. But it did get me thinking it was high-octane time we dedicated a **Disclaimer** to the theme of motoring. In fact by sheer coincidence I believe someone actually complimented me on my driving today when I picked a notice off my windscreen saying 'Parking, fine'. So that's OK, then. Anyway ...

GlassCuts is the information super-highway turbocharger of the British Glass Foundation. It is compiled in a fully equipped workshop reeking of transmission fluid and beer that is the MOT-authorized HQ of *GlassCuts Towers* by a team of pre-apocalyptic petrol heads and has no other function than to grease your nipples (*ooh err, missus*) wax your seats (*naughty but nice*) and perhaps even say a bit about glass.

Whilst every effort is made to ensure accuracy, no responsibility etc etc ... (usual car mats apply).

This email is sent to you solely on the basis that you would like to have your nuts checked for tightness but If you do not wish to receive further **GlassCuts** then either explain why if a cowboy walks into a German car showroom he should say 'Audi' or send an email marked: 'Old car park exit signs, surely they're on the way out?' to bgf@britishglassfoundation.org.uk. A brief indication as to why we are no longer your favourite AA Knights of the Road would be appreciated.

BGF welcomes onward transmission to anyone whom you feel we may be able to help alleviate those wrong turns in their lives in order to conceal those other wrong turns hidden underneath. Similarly if you have anything you consider may be of interest to our fellow Clarksons out there in the *Wonderful World of Glass*^{®GF} then send it to BGF at the usual address.

I leave you with this teaser; have you ever stopped in a lay-by next to a field for something to eat, got only half-way through a horse and thought: 'Hmmm ... I don't think I'm as hungry as I thought I was.' Me neither. Drive safely now.